



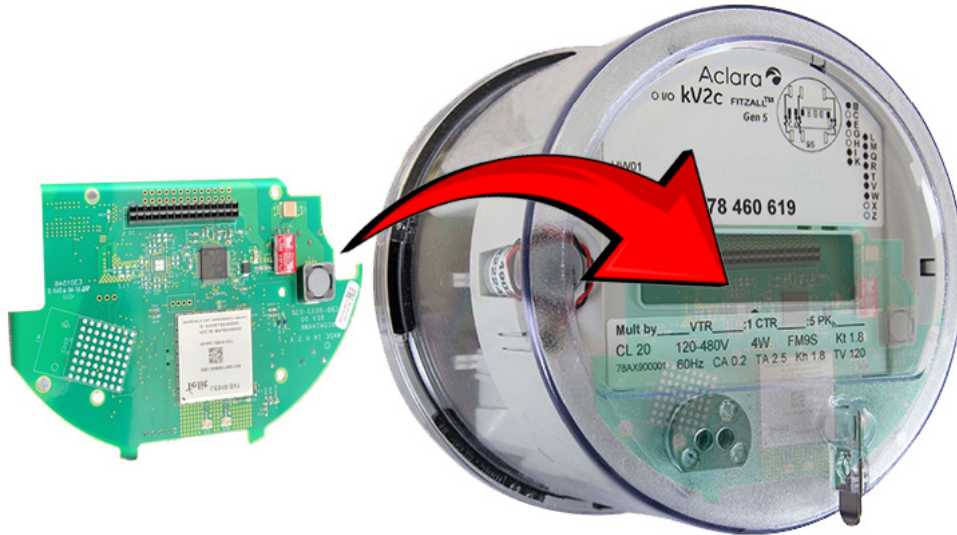
AMI Solutions

Reliable Results. Every Meter. Every Time.

AMI Solutions

925 Canal Street, Bristol, PA 19007
• 215.228.0500
• tescometering.com

DirectConnect



Introducing TESCO AMI Solutions DirectConnect™ – a simple, integrated, “plug and play” under-the-glass cellular modem for Gen 5 Aclara kV2c meters. DirectConnect™ seamlessly links your AMI (Advanced Metering Infrastructure) system or Adaptiv’s zero-infrastructure AMI. Our easy-to-use solution addresses your AMI voids so that you can improve data accuracy, enhance system efficiency, reduce costs, increase coverage, and improve customer satisfaction. DirectConnect™ allows users to fill in AMI gaps and replaces outdated 2G and 3G cellular devices that are no longer supported by most major carriers.

One feature that sets DirectConnect™ apart is the utilization of true IP and passthrough technology. This means users have “Always on Connectivity” so you can connect to the device 24/7 for reliable data, real time status, and consistent operability. DirectConnect™ is also cross-functional by integrating popular interfaces such as the Itron MV-90™, Aclara MeterMate, Trilliant UnitySuite, and Trilliant PrimeRead.

In addition to these robust features, DirectConnect™ is secure and efficient. It has bidirectional delivery capabilities over LTE networks, allowing you to manage your meters and devices through multiple communication channels. DirectConnect™ is backed by the ANSI C12.22 128-bit AES/EAX encryption standard so that your data stays secure and protected.

DirectConnect™ is available with multiple options including an integrated KYZ Board and a Viking connector.

Your Solution to AMI Voids



AMI Solutions

Reliable Results. Every Meter. Every Time.

Product Information Sheet

925 Canal Street, Bristol, PA 19007
• 215.228.0500
• tescometering.com

AMI Solutions

DirectConnect

FUNCTIONALITY

Connectivity: AT&T or Verizon LTE cellular
Security: ANSI C12.22 128-bit AES/EAX (combined encryption/authentication)
Memory: 40 kB
Clock Synch: To LTE network
Firmware: Over-the-air upgradable
Power Outage: Aggregated real-time reporting
Restoration Reporting: Aggregated real-time reporting

COMPLIANCE

Radio Emissions: FCC Part 15 Class A
Industry Canada ICES-003 Class A
Device IDs: FCC ID: R17LE91ONAV2
IC ID: 5131A-LE91ONAV2
Safety: ANSI C37.90.1
ANSI C62.41
Metrology: ANSI C12.1
ANSI C12.18
ANSI C12.19
ANSI C12.20
ANSI C12.21

RADIO PERFORMANCE

Protocols: TCP/IP
Modulation: OFDM (Orthogonal Frequency)
Date Rate: LTE Cat-1 (5 Mbps up , 10 Mbps down)
Frequency Band: LTE Bands 2, 4, and 12 or 13
Transmit EIRP: +20 dBm (including antenna gain)

POWER, PHYSICAL & ENVIRONMENTAL

Burden (including module): TCP/IP
S-Base: OFDM (Orthogonal Frequency)
Temperature: -22° F / -30° C to +158° F / +70° C

COMPABILITY

Gen 5 Aclara Kv2c meters
Class 20 forms: 3s, 4s, 6s, 9s, 36s, 45s
CL200 forms: 1s, 2s, 12s, 16s, 25s
Class 320 forms: 2s, 12s, 16s