

AMI Solutions

Product Information Sheet

925 Canal Street, Bristol, PA 19007
• 215.228.0500
• tescometering.com

Reliable Results. Every Meter. Every Time.

AMI Solutions

Adaptiv

Scalable AMI



WIRELESS MESH NETWORK
Self-healing. Self-optimizing.
Built for reliability.

UNIVERSAL SIM CARD
Multi-carrier connectivity.
Always find a live connection.

RELIABLE & SECURE
Advanced security
from meter to system.

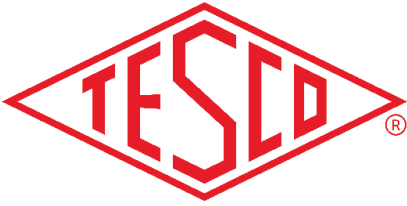
SCALABLE & FLEXIBLE
Designed to grow with
your utility.

BUILT FOR UTILITIES
Purpose-built for performance,
accuracy, and service.

TESCO AMI Solutions offers you Adaptiv, which eliminates the complexity and burdens of infrastructure while providing a robust, scalable, multi-commodity platform.

TESCO AMI is designed to simplify utility deployments by eliminating one of the most common barriers to successful rollouts: cellular connectivity limitations.

Seamless Cloud Software



AMI Solutions

Reliable Results. Every Meter. Every Time.

AMI Solutions

Adaptive Scalable AMI

KEY BENEFITS:

Integrated Data Transfer

Standards-based integration to utility billing applications

MULTISPEAKM, V-RSC, MEP

Seamless Cloud Software

No hardware to buy or databases to manage

Secure, Reliable Reads

Secure communications for on-demand move in/move out reads on all meters

Smart Device-Ready

2.4 GHz cellular/mesh meters, ANSI compliant

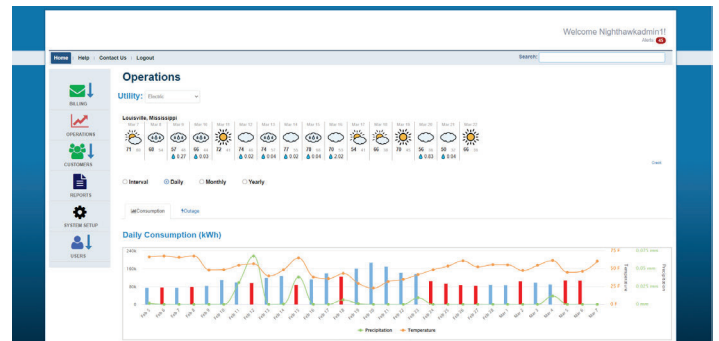
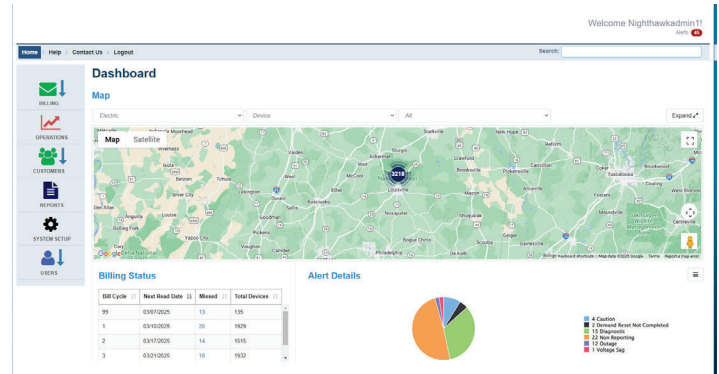


Product Information Sheet

925 Canal Street, Bristol, PA 19007

• 215.228.0500

• tescometering.com



Intuitive, User-Friendly GUI

Easy to navigate interface is user-friendly with no additional charges for upgrades, maintenance or support for the life the product

Smart Billing Integration

MultiSpeak vendor, NISC, and SEDC compliant, predictive billing capabilities mean you know what's missing before it's too late

Accurate, Secure Records

Best-in-class accessibility and security standards allow secure, encrypted mobile-ready access from any device; multi-factor authentication available

Robust Outage & Restoration Alerts

Outages and blinks are monitored daily, managed easily and effectively, allowing you to provide precise outage data for power quality reporting