



Reliable Results. Every Meter. Every Time.

Unit 202, iMez Building,
Pueblo Verde, Lapu-Lapu,
6015 Cebu, Philippines
• +63 32 263 1597
• tescometering.com

Test Equipment

Metering Cabinet / Enclosure Current Transformer



CT-S-0300-15-B0-P2



CT-S-0300-15-B0-P2 (top)

ABOUT TESCO

Since 1904, TESCO has been the trusted partner of electric utilities worldwide, delivering durable, precise, and innovative metering solutions designed for the real-world demands of the field and the laboratory. Our products are engineered and manufactured in the USA and backed by world-class technical expertise and support.

Reliable Results. Every Meter. Every Time.

DISCLAIMER

TESCO Metering reserves the right to modify product designs, specifications, features, and documentation at any time as part of our continuous improvement process. All information is provided "as is" and may change without prior notice. While TESCO® strives for accuracy, completeness, and technical reliability, customers should verify the latest product details before making purchasing or engineering decisions. For confirmation of current specifications or application suitability, please contact TESCO® directly.



Reliable Results. Every Meter. Every Time.

Unit 202, iMez Building,
Pueblo Verde, Lapu-Lapu,
6015 Cebu, Philippines
• +63 32 263 1597
• tescometering.com

Test Equipment

Metering Cabinet / Enclosure Current Transformer

APPLICATIONS

600V metering current transformers are used in a wide range of commercial and industrial metering installations where revenue-class accuracy is required for billing, and is specifically designed for meter cabinet enclosures.

HIGH ACCURACY, EXTENDED RANGE

High-accuracy, extended-range transformers exceed the IEEE 0.15S accuracy standard, delivering 0.15% metering accuracy from 1% of rated current through rating factor.

CONSTRUCTION

The core is constructed from wound layers of high accuracy, low loss electrical grade steel. The core is evenly wound with enamel coated copper wire to ensure against potential short circuits. The core and coil assembly is encapsulated in polyurethane specifically engineered for premium dielectric, mechanical and thermal properties for indoor and outdoor applications.

KEY FEATURES

- High rating factors, superior temperature performance, and top-tier metering accuracy
- Broad portfolio capable of replacing any major legacy brands
- Solid dielectric construction for extended outdoor life

TECHNICAL SPECIFICATIONS

Electrical

- **Primary currents:** Up to 800A
- **Secondary:** 5A

CT-S-0200-30-B1-P0-M



- **Frequency:** 60 Hz
- **Metering Accuracy:** 0.15S (high accuracy) or 0.3 (standard accuracy)
- **Rating Factors:** Up to RF 4 (varies by model)
- **Standards:** IEEE C57.13-2016
- **RUS:** Listed

Insulation & Environment

- **Insulation:** 600V, 10kV BIL
- **Environment:** Indoor/Outdoor

Physical

- **Inner diameter:** 1.64" (42 mm)
- **Outer diameter:** 3.37" (86 mm)
- **Bar lengths:**
 - ◊ 11.89" (302 mm)
 - ◊ 12.13 / 12.15" (308-309mm): depending on model (as shown in drawings)
- **Mounting:** High and low options (see dimension drawings)



Product Information Sheet

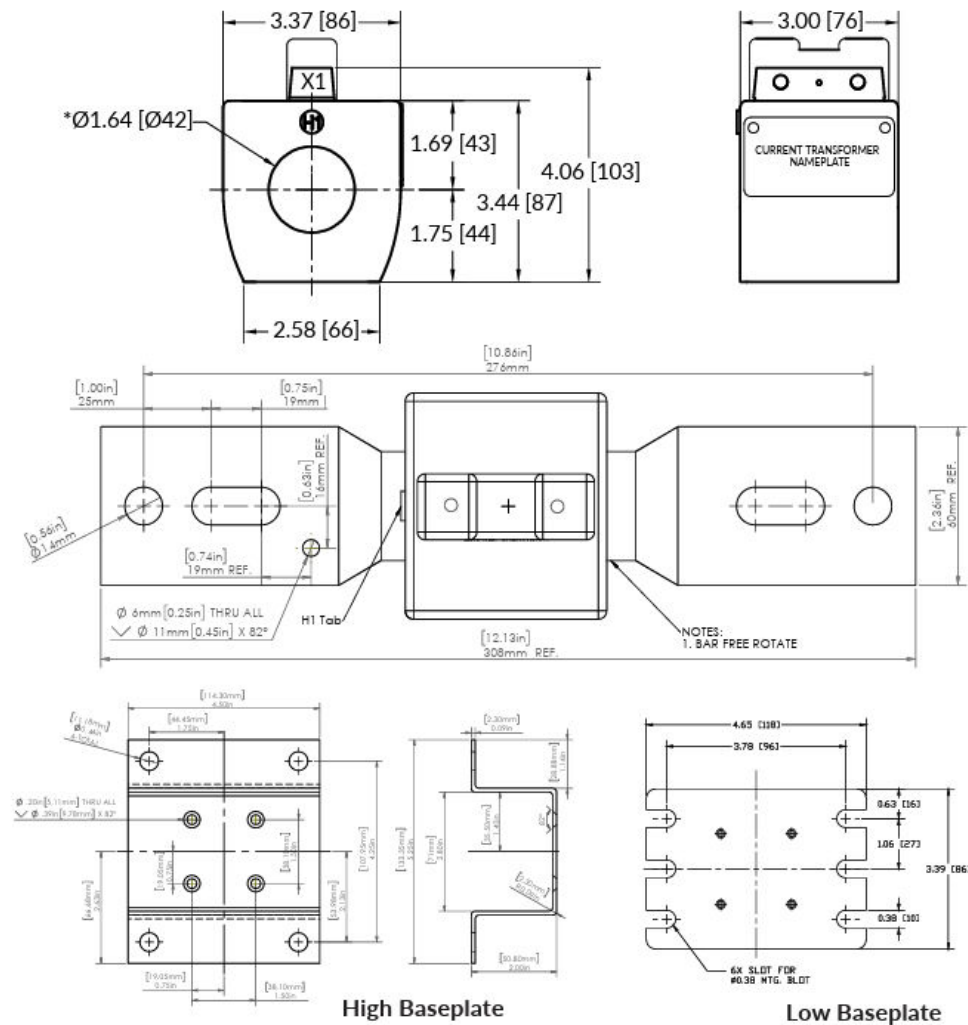
Unit 202, iMez Building,
Pueblo Verde, Lapu-Lapu,
6015 Cebu, Philippines
• +63 32 263 1597
• tescometering.com

Reliable Results. Every Meter. Every Time.

Test Equipment

Metering Cabinet /
Enclosure Current
Transformer

DIMENSIONS



Metric dimensions displayed in [mm]



Product Information Sheet

Unit 202, iMez Building,
Pueblo Verde, Lapu-Lapu,
6015 Cebu, Philippines
• +63 32 263 1597
• tescometering.com

Reliable Results. Every Meter. Every Time.

Test Equipment

Metering Cabinet /
Enclosure Current
Transformer

SELECTION GUIDE



CT-S-0200-30-B1-PO-M (side)

TESCO Catalog No.:	Description:	Cross-Reference:
CT-S-0200-30-B1-PO-M	CT, 200:5, 0.3% Accuracy, Low Baseplate, No Bar	ABB CBT-S, Accugrid COSO200SBN, Artech IRH-1, GE JCT-OS, GEC Durham Type TCB, Ritz DCAW/DCAB
CT-S-0600-15-B1-PO	CT, 600:5, 0.15% Accuracy, Extended Range, Low Baseplate, No Bar	ABB CBT-S, Accugrid COSO600ABN, Artech IRH-1, GE JCT-OS, GEC Durham Type TCB, Ritz DCAW/DCAB
CT-S-0300-15-B0-P2	CT, 300:5, 0.15% Accuracy, Extended Range, Pressed Bar and Baseplate	ABB CBT-S, Accugrid COSO300ABP, Artech IRH-1, GE JCT-OS, GEC Durham Type TCB, Ritz DCAW/DCAB

CT-S-0300-15-B0-P2

CT-S-0300-15-B0-P2 (side)

