



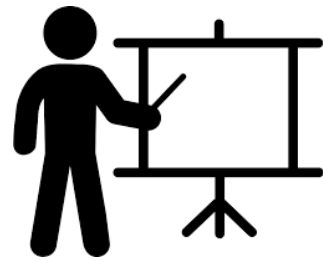
TESCO METERING

Company Overview

Who We Are and What We Do

Prepared By: Tom Lawton

Date: Date of May 5, 2025



Introduction

TESCO Company Overview

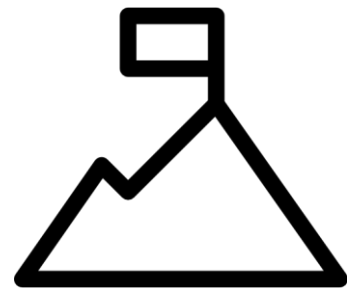
Prepared for:



Tom Lawton
President & CEO
TESCO Metering

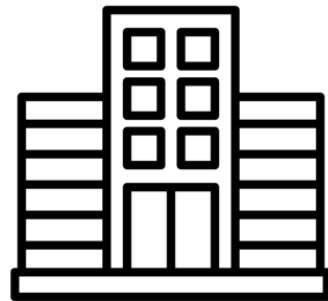
- Mission Statement
- Company Overview
- Products
- Services
- Manufacturing Capabilities
- Metering Education
- Certifications
- New Products
- Walker Cabin





Mission Statement

To become the primary outside metering resource for all electric utility customers



Company Overview



Mesurina was founded in 1976 and is the only Canadian manufacturer of test switches for Canada. TESCO acquired Mesurina in 2007 to expand our reach in Canada.



Knopp, founded in 1928 was acquired by TESCO in 2018. Focused on (and the world wide leader) in transformer testing equipment up to 6,000 amps and 36,000 volts for electric utilities around the globe.



Power Measurements, Inc., founded in 2014, is a development and manufacturing facility focused on new power measurement equipment for the electric utility industry. They manufacture our products and provide calibration and other meter service related services for our electric utility customers in the Philippines and the Pacific Rim.



TESCO Software, mainly located in New Brunswick, Canada, develops Meter Manager software for utilities and more.



Dial Machine was acquired by TESCO in 2020 as our in-house machine shop to provide services both internally and to external customers.



TESCO and Nighthawk are a perfect fit. The leader in all things metering now offers the world a leader in affordable AMI metering. Nighthawk is the exclusive home to Adaptiv™, your Solution for AMI Cellular Mesh! Adaptiv™ provides the lowest ownership cost of any AMI provider.

- Founded in 1904 by a Metering Engineer at the Philadelphia Electric Company (PECO)
- Designed the First Test Switch to promote safer field operations
- Designed the first load boxes and transformer burden test equipment
- Became the industry standard for electric meter testing throughout the early and mid to late 1900's



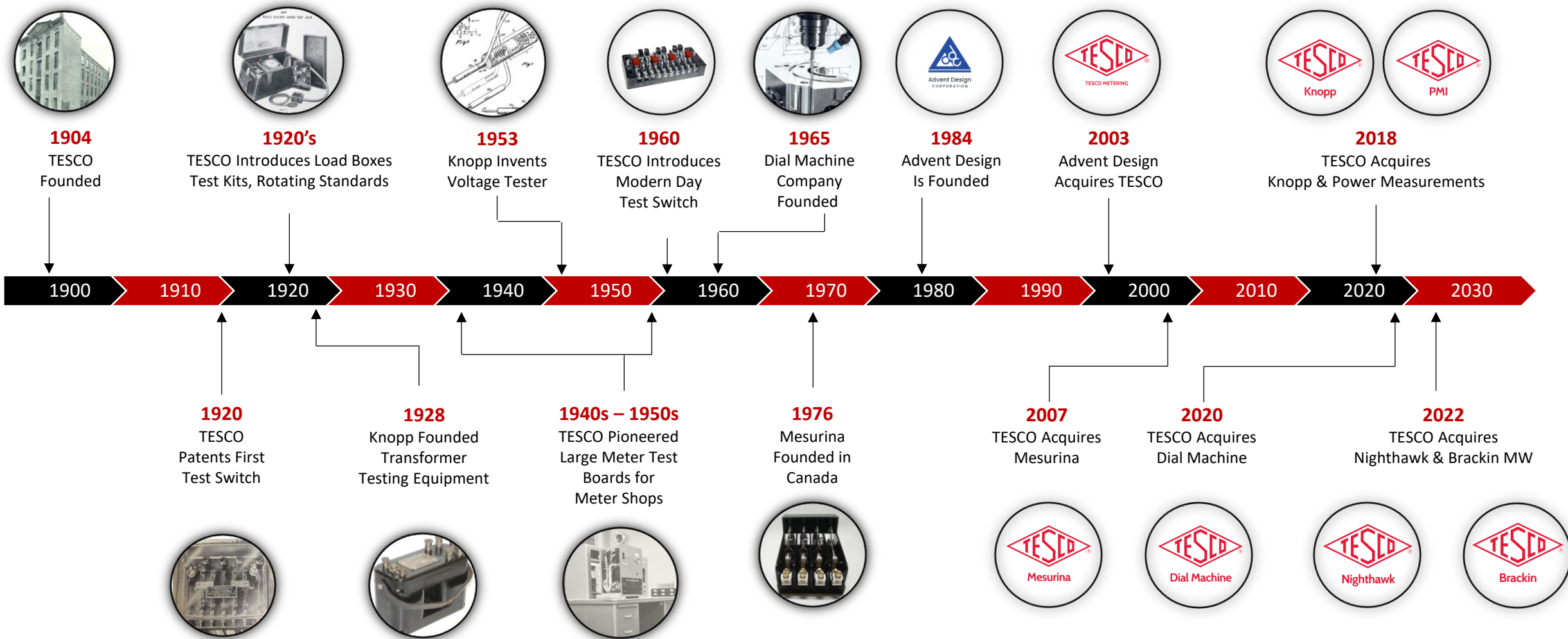
- Advent Design began utility projects with FP&L, PECO, PSE&G, and PPL (Meter Shop Automation).
- Acquired TESCO in 2003. Post-acquisition, expanded and modernized TESCO's product line—now the most comprehensive in its 115-year history.
- Since 2007, product development has focused on AMI-related utility needs.
- Rebranded as TESCO – The Eastern Specialty Company in May 2020.





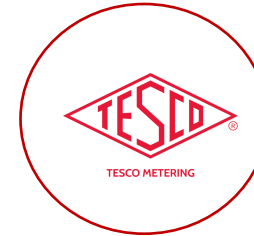
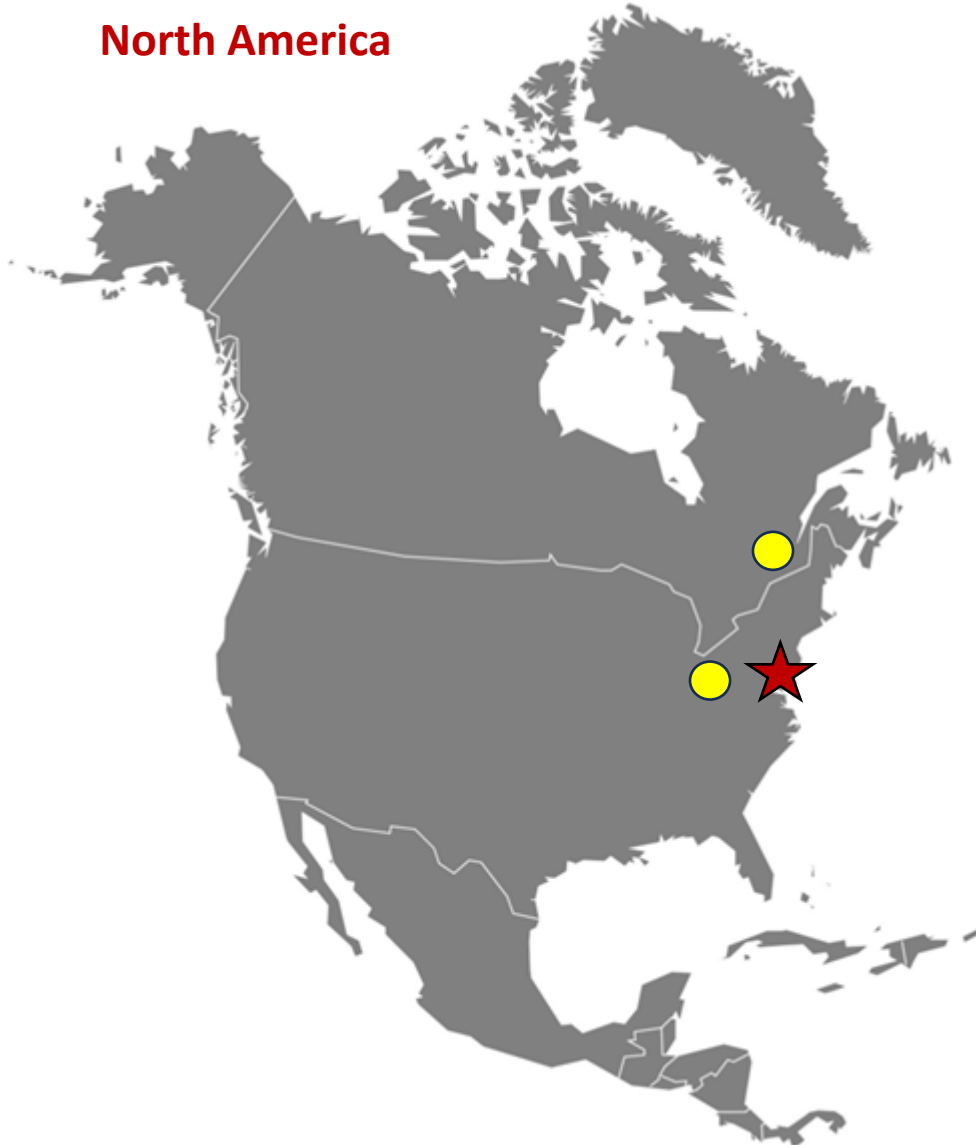
TESCO METERING

Timeline



North America

Philippines



TESCO Global
Headquarters
Bristol, PA
USA



Mesurina Ltd
Lachine, QC
Canada



Brackin Metal Works
Canton, OH
USA



Power Measurements
Basak, Lapu-Lapu City,
Cebu 6015
Philippines

Exceed Expectations and Improve

CORE VALUES: TESCO will be known for our loyalty and commitment to every customer and for continually improving our performance.

QUALITY POLICY: TESCO delivers effective solutions that exceed our customer's expectations for quality and service. TESCO is committed to continually improving the effectiveness of our total quality systems.



***To become the primary outside metering resource
for all electric utility customers***

How are we doing this?

Why are we doing this?



We are ONE company, aiming to be profitable to achieve our Mission of being the outside engineering/metering resource to our customers for decades to come.

Safety first. You are responsible for creating a safe, secure and accident-free environment for all guests and each other. Report and address issues immediately. Risks can be physical or cyber.

We must be profitable in order to achieve our mission.

Do what's best for the Client, both internal and external. Deliver legendary service.

Take time to do things right the first time and to the best of your ability.

Find a Way. Be passionate. Be determined. Take personal responsibility for making things happen somehow, some way. Respond to every situation by looking for how we can do it, rather than explaining why it can't be done. Be resourceful and show initiative.

Listen generously. Always make time to listen.

Debate passionately. It means you both care. Then work together to find the best path forward.

Be quick to ask and slow to judge. Assume positive intent. Work from the assumption that people are good and the intent behind their actions is positive. Set aside your own judgements and preconceived notions. Give people the benefit of the doubt.

Honor commitments and be punctual.

Check the ego at the door. It's not about you. Don't let your ego or personal agenda get in the way of doing what's best for the team. Worrying about who gets credit or taking things personally is counterproductive. Make sure every decision is based solely on advancing company goals.

Practice blameless problem solving. When an issue arises, develop a solution rather than pointing fingers or dwelling on problems. Identify lessons learned to improve our processes so we don't make the same mistakes again.

Lead, don't manage.

Embrace and drive change.

Set and ask for expectations.

Seek to create win/win solutions.

Keep things fun.

We are one team. Your team is your family. Always be there for each other and be respectful and courteous toward each other.

Be an ambassador of our Company in and outside of the work place. Always speak positively of our company and everyone in our company.

Smile before you answer the phone or begin a conversation.

Appearance counts—personal, company and facility. Being organized makes a difference.



Products

EVSE (Electric Vehicle Supply Equipment): EV charging test systems such as the T4350 EVSE Test System, PL4000 and PL4150 Programmable Load Boxes, and Man-in-the-Middle Cables.



ACT100 & DCT350 – AC & DC Test Systems (Cat. 5000)

Cat.



Man-in-the-Middle (MitM) Cables

Cat.



PL4000 – Programmable AC Load Box

Cat.



PL4150 – 150kW Programmable Load Box

Cat.



T4350 EVSE Test System

Cat.

Product Categories: Field Testing

Field Testing Portable equipment for field applications, including Current Transformer Burden Test Sets, Field Test Kits, Meter Site Analyzers, and Signal Strength Analyzers.



Pure Sine Wave Inverter (Catalog No. 1210)

Cat.



RC-50 Artificial Phantom Load with Power Factor (Catalog No. 480)

Cat.



Service Ground Test Set (Catalog No. 900)

Cat.



IEC Meter Adapter (Catalog No. 1186)

Cat.



KEY100 Wireless Mini Keyboard with Touchpad & RGB Backlit

Cat.



Load-to-Line Jumpers (Catalog No. 200)

Cat.



Meter Site Analyzer (Catalog No. 6330)

Cat.



Optical Pickup (Catalog No. 1037-DTS)

Cat.



Optical Probe (Catalog No. 1038)

Cat.



Phase Angle Meter (Catalog No. 646)

Cat.



Pole Mounting Bracket

Cat.



Probe & Pickup (Catalog No. 1035)

Cat.

Product Categories: Field Testing

Field Testing Portable equipment for field applications, including Current Transformer Burden Test Sets, Field Test Kits, Meter Site Analyzers, and Signal Strength Analyzers.



10 Amp Current Transformer Burden Test Set (Catalog No. 1043)

Cat.



20 Amp Current Transformer Burden Test Set (Catalog No. 1044A)

Cat.



Artificial Resistive Load (Catalog No. 326)

Cat.



Closed-Link Field Test Kit (Catalog No. 630)

Cat.



CT Ratio/Burden Tester (Catalog No. 1047)

Cat.



Field Bag (Cat. 1048)

Cat.



Field Test Interface Kit (Catalog No. 2200)

Cat.



Field Test Kit (Catalog No. 621)

Cat.



Field Test Kit GA Series (with Resistive Load) (Catalog No. GA-50)

Cat.



FTS-2990 Field Meter Test Station

Cat.



Fused Current Jumpers (Catalog No. 9412)

Cat.



High Voltage Non-Contact Current Probe (Catalog No. P02-0802)

Cat.

Product Categories: Field Testing

Field Testing Portable equipment for field applications, including Current Transformer Burden Test Sets, Field Test Kits, Meter Site Analyzers, and Signal Strength Analyzers.



Signal Strength Analyzer (Catalog 1160)

Cat.



Transformer Polarity Checker (Catalog No. 865)

Cat.



UtiliCart® (Catalog No. 1060)

Cat.



UtiliShelf® (Catalog No. 1063)

Cat.

Meter Shop Tools and equipment for meter shop operations, including Meter Test Boards, Optical Pick-up Sensors, and Calibration Adapters.



A-Base Test Board Adapter (Catalog No.1182-3)

Cat.



Calibration Pulse Processor (Catalog No. 2401)

Cat.



Desktop Meter Qualification Board (Catalog No. 2199)

Cat.



Desktop Meter Station (Catalog No. 2100)

Cat.



Desktop Test Interface Station (Catalog No. 2210)

Cat.



DTS-2990 – Desktop Meter Test Station

Cat.



IEC Meter Adapter (Catalog No. 1186)

Cat.



K-Base Test Board Adapter (Catalog No. 1180)

Cat.



KYZ Indicator and Tester

Cat.



Meter Engineering Board (MEB)

Cat.



Meter Test Board (Cat. MTB1)

Cat.



Meter Test Board (MTB-3200)

Cat.

Product Categories: Meter Shop

Meter Shop Tools and equipment for meter shop operations, including Meter Test Boards, Optical Pick-up Sensors, and Calibration Adapters.



MTB Calibration Adapter (Catalog No. 2450-CAL-30)

Cat.



Optical Pick-up Sensor



Optical Pickup (Catalog No. 1037-STND)



Optical Pickup for Itron Gen™5 Riva™ Meter (Catalog No. 1037 – RIV1 & RIV3)

Cat.



Optical Probe (Catalog No. 1038)

Cat.



T3 Turbo Meter Tester

Cat.



TESCO / PG&E BPTM: Backup Power Transfer Meter

Cat.



Test Adapter for Terminal Block Connected Meters (Catalog No. 2460)

Cat.



Three Phase Meter Test Board (Catalog No. MTB-3050)

Cat.



Top of the Meter Optical Pickup (Catalog No. 1037-ITRN)



Vacuum Assist (Catalog No. 1029)

Cat.

Reference Standards & Transformer Test Systems (Knopp Series) Precision measurement products including Automatic Transformer Comparators, Voltage Testers, Burden Sets, and Calibration Standards—trusted tools for high-accuracy testing and calibration.



ANSI Standard Burden Sets (Voltage and Current)



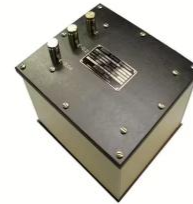
Automatic Current Transformer Comparator (KATC-C2)

Cat.



Automatic Voltage Transformer Comparator (KATC-V2)

Cat.



Burden Set – Current

Cat.



CT/PT Bus-Bar Safety Protector (Catalog No. 6450)

Cat.



Current Transformer Testing System (Type KCTS-8000)

Cat.



IEC Standard Burden Sets (Current)

Cat.



K-60 KNOPP Low Impedance Voltage Tester

Cat.



KCTS-8000X Extended Range Knopp Current Transformer Testing System

Cat.



KCTS-8000XA Automated CT Testing System

Cat.



Knopp K-3 Phase Sequence Indicator

Cat.



Loading Transformer (Catalog No. CL-6)

Cat.

Reference Standards & Transformer Test Systems (Knopp Series) Precision measurement products including Automatic Transformer Comparators, Voltage Testers, Burden Sets, and Calibration Standards—trusted tools for high-accuracy testing and calibration.



Precision Multirange Voltage Transformers (Catalog No. WP-36000)

Cat.



Single Phase Socket Tester (Catalog No. 280)

Cat.



Temporary Power Outlet (Catalog No. K-271, K-272, K-273)

Cat.



Polyphase Socket Tester (Catalog No. K-281)

Cat.



Precision Multirange Current Transformer (Catalog No. P-2000)

Cat.



Precision Multirange Current Transformer (Catalog No. P-5000)

Cat.



Voltage Transformer Testing System (KVTS)

Cat.



Third Rail Voltage Tester (Catalog No. 4E2-1)

Cat.



Uniload Voltage Transformer (Catalog No. 2J4-4)

Cat.



Uniload Voltage Transformer Test Set (Catalog No. 2J6)

Cat.

Product Categories: Zero Infrastructure AMI

Zero Infrastructure AMI Advanced communication solutions such as Adaptiv™, DirectConnect, and Fiber Hubs—providing AMI capabilities without infrastructure buildout.



Adaptiv™

Cat.



DirectConnect

Cat.



Nighthawk Fiber Hub

Cat.

Product Categories: Safety & Consumables

Safety & Consumables Essential safety gear and consumables, including Fused Jumpers, Meter Seals, Safety Disconnect Devices, and Test Plugs.



"H" Jumper (Catalog No. 201)

Cat.



"T" Seals (Catalog No. 224)

Cat.



A-Base Jumpers (Catalog No. 202 and 203)

Cat.



Acrylic Padlock Meter Seals (Catalog No. 221)

Cat.



Cable Seals (Catalog No. 223)

Cat.



Cable Sets (Catalog No. J-35-50)

Cat.



Carrying Case

Cat.



Click Switch (Catalog No. 995A)

Cat.



Clip-On PocketPal Carrying Case (Catalog No. 1040)

Cat.



Connector Link Assembly (Catalog No. 900-0114)



Demand Seals (Catalog No. 220)

Cat.



Flexible AC Current Probe (Catalog No. 361)

Cat.

Product Categories: Safety & Consumables

Safety & Consumables Essential safety gear and consumables, including Fused Jumpers, Meter Seals, Safety Disconnect Devices, and Test Plugs.



Fused Current Jumpers (Catalog No. 9412)
Cat.



Fused Jumper Set (Catalog No. 204)
Cat.



Horn Bypass Jumpers (Catalog No. 205)
Cat.



Hot Socket Gap Indicator (Catalog No. 300-2)
Cat.



Hot Socket Gap Indicator Calibration Fixture (Catalog No. 302)
Cat.



Hot Socket Repair Kit (Catalog No. 304 - 305)
Cat.



Hot Socket Simulator (Cat. 3100L)
Cat.



IEC Meter Adapter (Catalog No. 1186)
Cat.



Meter Disconnect Sleeves (Catalog No. 250)
Cat.



Meter Service Disconnect Adapter (tilted at a 45° angle)
Cat.



Meter Service Disconnect Adapters (Catalog No. 251)
Cat.



Meter Service Disconnect Adapters (Non-energized)
Cat.

Product Categories: Safety & Consumables

Safety & Consumables Essential safety gear and consumables, including Fused Jumpers, Meter Seals, Safety Disconnect Devices, and Test Plugs.



Meter Socket Blank-Out Covers
(Catalog No. 275 and 276)

Cat.



Meter Socket Jumper Covers (Catalog No. 277)

Cat.



Optical Port Adapters (Catalog No. 1041)

Cat.



Phase Sequence Indicator (Catalog No. 500)

Cat.



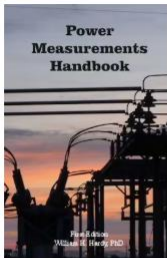
Polypropylene Padlock Meter Seals
(Catalog No. 222)

Cat.



Potential Jumpers (Catalog No. 202)

Cat.



Power Measurements Handbook



RF Meter (Catalog No. 1120)

Cat.



Safety Disconnect and Wireless Probe
(Catalog No. 1039-WP)

Cat.



Safety Disconnect Device (Catalog No. 1039)

Cat.



Safety Headlamp (Catalog No. 450)

Cat.



Service Disconnect Shield (Catalog No. 253)

Cat.

Product Categories: Safety & Consumables

Safety & Consumables Essential safety gear and consumables, including Fused Jumpers, Meter Seals, Safety Disconnect Devices, and Test Plugs.



SmartPole Meter Boxes (Catalog No. 701 & 702)

Cat.



Socket Safety Clip (Catalog No. 301)

Cat.



Streetlight Meter Adapter (Catalog No. 1184)

Cat.



Temporary Service Cover

Cat.



TESCO AC Current Probe (Catalog No. 411)

Cat.



Test Plug (Catalog No. 1077)

Cat.



Test Switch Adapters for the 6330

Cat.



Test Switch Isolator (Catalog No. 1076)

Cat.

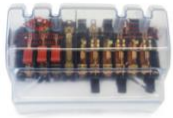


Transformer-Rated SmartPole Meter Disconnect Box (Catalog No. 703)

Cat.

Product Categories: Test Switches

Test Switches & Enclosures A range of test switches and protective enclosures, including 10-Pole and 7-Pole Test Switch Protectors, and Transformer Rated Pre-Wired Meter Enclosures.



10-Pole Test Switch Protectors
(Catalog No. 6441 & 6442)

Cat.



7-Pole Test Switch Protectors
(Catalog No. 6442 & 6442-C)

Cat.



Meter Test Switches



TESCO Back Connected Test Switches



Transformer Rated Pre-Wired Meter Enclosures



Transockets



Services

AMI & Meter Engineering Support

TESCO assists utilities in specifying, testing, and deploying advanced metering infrastructure (AMI) systems. Our engineering team supports meter evaluation, firmware testing, lab configuration, and system integration to ensure reliable performance and interoperability across your metering ecosystem.



Meter Shop Layout

TESCO provides meter shop layout services to electric, gas and water meter shops. We have significant experience in the application ...
[Learn more](#)



Project Management

TESCO provides complete project management services for implementing operational improvements including scheduling ...
[Learn more](#)



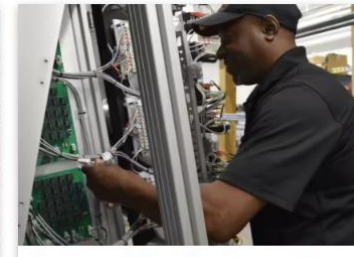
Quality Systems

Quality Systems are developed to monitor and continually improve the performance of key processes. Eliminating process ...
[Learn more](#)



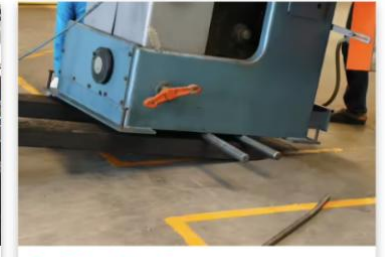
AMI Support

In addition to Meter Services, TESCO also provides AMI Support. These services enhance our capability of fulfilling any metering ...
[Learn more](#)



Equipment Specifications and Selection

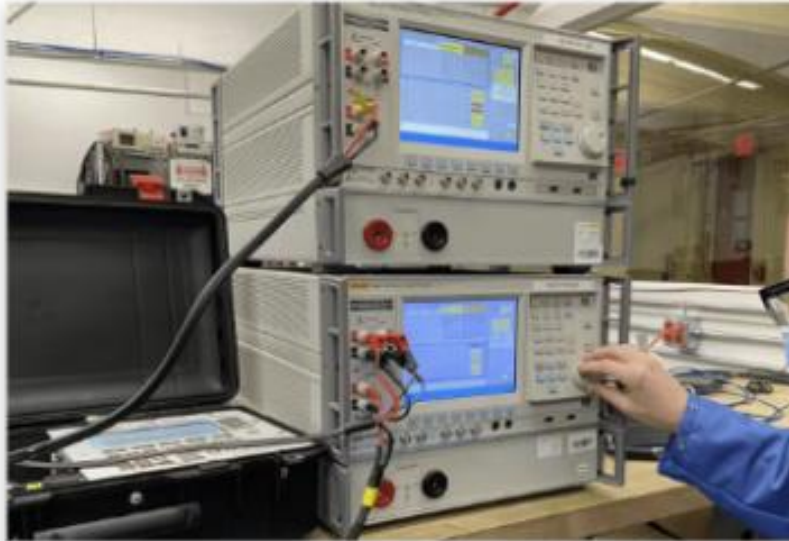
The Equipment or System Selection Process starts with an evaluation of existing operations and the development of a System Requirements ...
[Learn more](#)



Facility relocation

Facility relocation and dealing with its impact on production can be an extremely risky endeavor for any company. TESCO will develop ...
[Learn more](#)

Meter Laboratory Services



Calibration Laboratory

We at TESCO are dedicated to providing quality, accurate, accredited calibrations by delivering outstanding customer service ...

[Learn more](#)

Meter Shop Services



Equipment Rebuild

Working with a thin budget? There are times when new equipment just isn't an option for some customers. That's why we offer ...

[Learn more](#)

Software Enterprise-grade software solutions tailored for utility operations:

Asset Management



Field Service Management

The Field Client is a work management and field service module designed specifically for metering. It interfaces with virtually all field test equipment ...
[Learn more](#)



Gas Metering

TESCO's Meter Manager interfaces with major Gas Prover manufacturers thereby eliminating a manual, potentially error prone process ...
[Learn more](#)



Integration Across the Portfolio

Meter Manager seamlessly interfaces with SAP, Oracle, Maximo, Head End, CIS, Work Management and legacy systems ...
[Learn more](#)



Integration with ERPs

One of the most pervasive challenges for utilities using an ERP system, is integrating these ERPs to other applications within their organization ...
[Learn more](#)



Materials Inventory

TESCO's Meter Inventory Management is designed for comprehensive inventory control of meters and other serialized meter equipment ...
[Learn more](#)



Measurement Canada

Measurement Canada is an agency of Innovation, Science and Economic Development Canada. It is responsible for ensuring accuracy ...
[Learn more](#)



Meter Manager

With more than 100 years of industry knowledge and experience, TESCO Meter Manager is seamlessly supporting IOUs, Municipalities and Cooperatives ...
[Learn more](#)



Meter Shop Test Records & Operations Management

Meter Manager supports your testing needs beyond accuracy. A test consists of a series of user defined tasks, steps and sequences with ...
[Learn more](#)



Random Sample/In-service Sampling

The Random Sample module, sometimes referred to as the in-service testing module, is designed to manage the random and periodic testing ...
[Learn more](#)



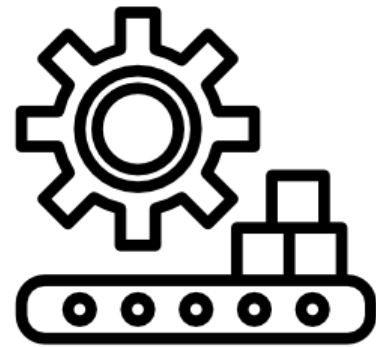
Test Equipment Integration

Meter Manager integrates with field and shop test equipment from almost all manufacturers ...
[Learn more](#)



The Self-Serve / Kiosk

The Self-Serve / Kiosk module allows users to check meters in and out either from their own device or from a stand-alone kiosk ...
[Learn more](#)



Manufacturing Capabilities

Custom U.S.-Based Manufacturing. Shorter Lead Times. Long-Term Reliability.

At TESCO, our in-house, vertically integrated manufacturing allows us to deliver precision, speed, and flexibility—without dependence on overseas suppliers.

Why TESCO?

Faster lead times, lower risk

Flexible from prototypes to scale

Trusted by utilities and OEMs

Made in the USA

Core Capabilities

- Casting & Fabrication: Epoxy, metal forming, stamping
- Precision Machining: CNC, Swiss, grinding
- Joining & Finishing: Welding, powder coat, varnish
- Integration: Coil winding, embedded software
- 3D Printing: Rapid prototyping





Metering Education



TESCO METERING

Meter Schools & Conferences



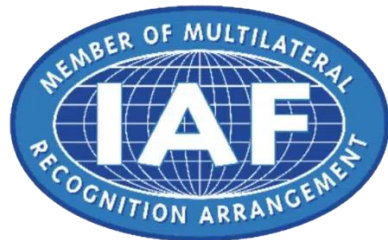
Major Participation with the Main Meter Schools & Conferences



Certifications



NEMA
**MAKE IT
AMERICAN™**





TESCO METERING



New Products



TESCO METERING

New Products: TESCO Turbo Tester



Unleash The Power Of
TRUE
Three-Phase
Testing With
USA
Manufactured
Equipment





Announcing TESCO's Turbo Meter Tester (T3)




PR Newswire

News Products Contact

News in Focus Business & Money Science & Tech Lifestyle & Health Policy & Public Interest People & Culture

Search

TESCO Introduces the T3 Turbo Meter Tester--A Smarter, Faster Way to Test Meters in the Field



NEWS PROVIDED BY
TESCO - The Eastern Specialty Company →
Mar 21, 2025, 09:39 ET

SHARE THIS ARTICLE

f x in g e

SHARE A PRE-MADE POST

Paired with the 6330 Meter Site Analyzer, the T3 provides a complete field-testing solution, ensuring full meter and site diagnostics for any scenario.

BRISTOL, Pa., March 21, 2025 /PRNewswire/ -- Utilities face mounting challenges when it comes to meter testing and site diagnostics. Traditional methods require bulky test equipment, lengthy testing processes, and frequent lab verification, leading to increased costs, inefficiencies, and delays in resolving metering issues.




To address these problems, TESCO has launched the T3 Turbo Meter Tester, a powerful, lightweight tool that allows technicians to perform fast, accurate self-contained meter testing directly in the field. With built-in phantom load capabilities, true three-phase testing, and superior portability, the T3 eliminates the need for external load sources and lab-based verification, streamlining the testing process and improving utility operations.

However, testing the meter alone isn't always enough. For full-site diagnostics and transformer-rated meter testing, the T3 pairs perfectly with the TESCO 6330 Meter Site Analyzer, creating the ultimate metering field solution.

Why the T3 Turbo Meter Tester is a Game-Changer for Utilities

The T3 Turbo Meter Tester changes the game by making field testing faster, safer, and more reliable than ever.

X Post this



Unleash The Power Of True
Three-Phase Testing With
USA
Manufactured Equipment

Made in the USA



Test Your Meters Anywhere!

Revolutionizing Electric Meter Field Testing: Introducing the TESCO® FTS-2990 Field Test Meter Station

NEWS PROVIDED BY
TESCO - The Eastern Specialty Company --
Aug 16, 2024, 15:26 ET

SHARE THIS ARTICLE



SHARE A PRE-MADE POST

BRISTOL, Pa., Aug. 16, 2024 /PRNewswire/ --

Setting the Standard in Metering Solutions

Since its founding in 1904, TESCO® – The Eastern Specialty Company – has been the trusted source of metering solutions to the nation's energy providers. For over a century, TESCO® has played a crucial role in ensuring the accuracy and reliability of the meters that keep our power grid stable and dependable. Accurate metering is the backbone of a reliable power grid, ensuring that energy is measured precisely and that customers are billed fairly.

Field technicians are at the forefront of maintaining this accuracy. These professionals are responsible for testing meters to ensure they function correctly, often working in challenging environments. Traditionally, meter accuracy testing has been performed in controlled lab settings, where precise instruments can be used to validate performance. However, there are many situations where meters must be tested on-site, such as during installation, maintenance, or when a meter's performance is in question.



TESCO FTS-2990 Field Test Station can test any meter form with a single piece of equipment in the field with



PR Newswire

News

Products

Contact

Search

News in Focus

Business & Money

Science & Tech

Lifestyle & Health

Policy & Public Interest

People & Culture

TESCO Launches Nighthawk DirectConnect™: Secure LTE, Solving AMI Integration, and Interoperability Challenges



NEWS PROVIDED BY
TESCO - The Eastern Specialty Company →
Aug 26, 2024, 17:06 ET

SHARE THIS ARTICLE



BRISTOL, Pa., Aug. 26, 2024 /PRNewswire/ -- TESCO - The Eastern Specialty Company, a leader in innovative metering solutions, is proud to introduce the Nighthawk DirectConnect™, a game-changing product designed to address the most pressing challenges faced by utility companies today. As utilities continue to modernize and expand their infrastructure, Nighthawk DirectConnect™ sets a new standard for reliability, security, and interoperability in metering technology.

Utility companies are increasingly challenged by a lack of interoperability across systems, particularly with older meters that are incompatible with newer technologies like the Itron MV-90. Additionally, as cellular carriers phase out support for older networks, utilities are left vulnerable without technical support, leading to potential security risks such as data leaks and breaches. These issues are further compounded by AMI voids, where inconsistent data from dropped connections can result in inaccurate meter readings and system inefficiencies. TESCO understands these challenges and remains committed to providing reliable, secure solutions that ensure seamless connectivity, as long as the signal is available.

Innovating the Future: Nighthawk DirectConnect™

In response to these challenges, TESCO introduces Nighthawk DirectConnect™, a revolutionary product





TESCO METERING

New Products: Fiber Hub

MADE IN
USA



tescometering.com

PR Newswire

News

Products

Contact

Search

News in Focus

Business & Money

Science & Tech

Lifestyle & Health

Policy & Public Interest

People & Culture

TESCO® Metering Introduces the Nighthawk Fiber Hub: Revolutionizing Utility Infrastructure with Advanced Fiber Mesh Technology



NEWS PROVIDED BY
TESCO - The Eastern Specialty Company →
Jan 15, 2025, 12:14 ET

SHARE THIS ARTICLE



BRISTOL, Pa., Jan. 15, 2025 /PRNewswire/ – TESCO® Metering, the trusted name in metering solutions since 1904, is proud to announce the launch of the **Nighthawk Fiber Hub**, a groundbreaking solution for utilities leveraging fiber networks throughout their service territories. This innovative device is designed to provide high bandwidth backhaul for clusters of over 20 LEAF devices, with a maximum HUB capacity of 150 LEAFs. With unmatched scalability and reliability, the Nighthawk Fiber Hub is set to redefine network infrastructure for utilities managing electric and water systems.

"The Nighthawk Fiber Hub represents the next generation of utility communication technology," said Tom Lawton, President & CEO at TESCO® Metering. "Its advanced capabilities, including a self-healing, self-configuring RF mesh network, empower utilities to efficiently manage their infrastructure while reducing operational costs and improving service reliability."

Key Features and Benefits

- **Superior Connectivity:**
The Nighthawk Fiber Hub utilizes high-bandwidth fiber backhaul for seamless integration with customer-deployed Passive Optical Networks (PON) or any copper Ethernet interface, ensuring robust connectivity across a wide area.





TESCO METERING

New Products: KCTS-8000X



tescometering.com

PR Newswire

News

Products

Contact

S

News in Focus

Business & Money

Science & Tech

Lifestyle & Health

Policy & Public Interest

People & Culture

TESCO Unveils KCTS-8000X Extended Range: Advanced Transformer Testing System with Traceable Accuracy Down to a 1% Rating Factor



NEWS PROVIDED BY
TESCO - The Eastern Specialty Company →
Sep 23, 2024, 17:23 ET

SHARE THIS ARTICLE



BRISTOL, Pa., Sept. 23, 2024 /PRNewswire/ -- TESCO, a leading provider of utility testing solutions, is proud to introduce its newest product, the **KCTS-8000X** Current Transformer Testing System. This state-of-the-art system is engineered for **traceable accuracy down to a 1% rating factor**, setting a new standard for testing transformers with **primaries up to 8000 amperes**. With its advanced features, the KCTS-8000X offers power utilities unmatched precision, reliability, and efficiency, ensuring that their metering systems remain accurate and compliant.

Addressing Utility Industry Needs

Utility companies rely heavily on accurate transformer testing to ensure precise metering, which directly affects billing and grid stability. Current transformers (CTs) play a crucial role in this process, scaling down high currents so they can be accurately measured. Even minor inaccuracies can lead to incorrect billing, impacting both utility companies and customers.

The **KCTS-8000X** is designed to solve these issues by offering enhanced testing accuracy for a wide range of current transformers, ensuring that utilities can confidently test transformers and minimize errors. By incorporating advanced features such as **electronically compensated burdens** and **real-time data integration**, the KCTS-8000X guarantees precise results with every test.

"We developed the KCTS-8000X in response to the growing demand for more accurate transformer testing in the utility sector," said Tom Lawton, President & CEO at TESCO. "This system provides the confidence utility companies need to ensure billing accuracy while reducing operational inefficiencies and test errors."



TESCO METERING

New Products: KCTS-8000XA



tescometering.com



PR Newswire

News

Products

Contact

Search

News in Focus

Business & Money

Science & Tech

Lifestyle & Health

Policy & Public Interest

People & Culture

TESCO® Unveils Advanced Automated Current Transformer Testing System for Utility Labs



NEWS PROVIDED BY
TESCO - The Eastern Specialty Company →
Jan 16, 2025, 15:19 ET

SHARE THIS ARTICLE



Achieves 1% accuracy for CTs up to 8000 amps, ensuring precise metering and billing with traceable, reliable results.

BRISTOL, Pa., Jan. 16, 2025 /PRNewswire/ – TESCO® Metering, the trusted name in metering solutions since 1904, proudly announces the release of the **Knopp Automated Extended Range Current Transformer Testing System (Type KCTS-8000XA)**. Designed to revolutionize current transformer (CT) testing for utility companies, the KCTS-8000XA combines cutting-edge technology with automated efficiency, enabling faster, safer, and more precise testing.

The **KCTS-8000XA** offers unmatched accuracy down to 1% ratio for CTs with primary currents up to 8000 amperes, making it an indispensable tool for utility labs. Its advanced automation features allow seamless integration with TESCO Device Manager (TDM), Meter Manager, or other systems, reducing operator error and ensuring consistent, traceable results.

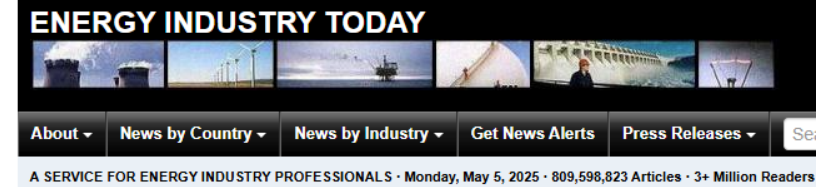
"This system represents TESCO's commitment to innovation and quality," said Tom Lawton, President and CEO of TESCO. "By automating the testing process and integrating real-time data management, the KCTS-8000XA empowers utility professionals to achieve greater efficiency, accuracy, and safety in transformer testing."

**Automated Testing
Traceable Accuracy
Down to 1%
Rating Factor**



Knopp Extended Range Current Transformer Testing System

KCTS-8000XA Automated Current Transformer Tester



[News Search](#) | [All News Topics](#) > [Energy Industry News Topics](#): [By Country](#) | [By State](#) ; [Press Releases by Industry Channel](#) > All Energy Industry Press Releases

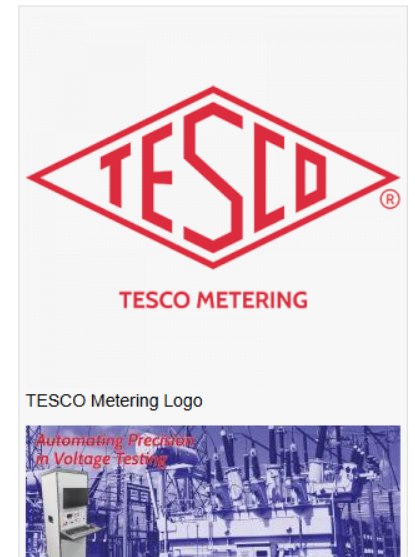
TESCO® Metering Introduces the Automated Knopp KVTS System: Faster, Safer, and Smarter Voltage Transformer Testing

The automated solution for accurate transformer testing, ensuring precise metering with advanced safety and seamless software integration.

BRISTOL, PA, UNITED STATES, January 17, 2025 /EINPresswire.com/ – TESCO® Metering, a leader in metering solutions, is proud to announce the launch of the Knopp Automated Voltage Transformer Testing System (KVTS). Designed to meet the evolving needs of the utility industry, the KVTS ensures unparalleled accuracy and efficiency in testing instrument transformers with 120-volt secondaries and up to 14,400-volt primaries, with optional customization available for up to 36,000-volt primaries.

State-of-the-Art Features for Optimal Testing the KVTS integrates cutting-edge technology to deliver unmatched performance in transformer testing. Key features include:

- High Accuracy Voltage Transformer Comparison



New Products: Sub Station Meter Tester

Power Meets Precision at the Point of Connection

Whether you're validating substation performance or testing the integrity of intertie connections between utility grids, the TESCO® Intertie & Substation Meter Adapter delivers reliable, accurate results in the field.

Built to integrate directly with the TESCO #6330 Meter Site Analyzer and ABB FT-1 test switches, this adapter empowers utility technicians with the tools they need to troubleshoot, verify, and maintain the backbone of the grid—right where systems converge.

Key Benefits & Features:

Test Intertie Connections with Confidence

Verify electrical integrity and performance between two separate utility grids with high accuracy.

Ideal for Substation Testing

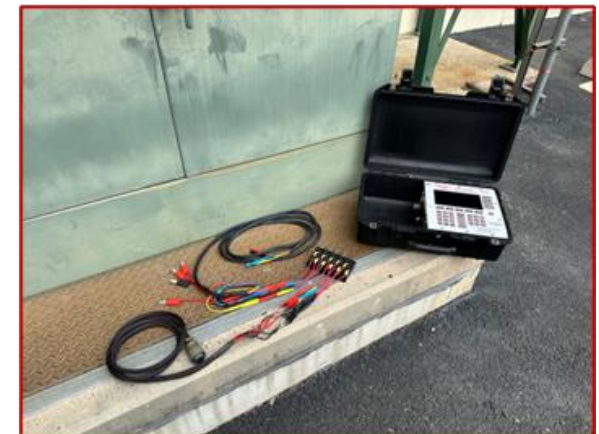
A vital tool for inspecting voltage and current conditions at key substation tie-in points.

Seamless Integration with ABB FT-1 Test Switch

Engineered for fast and safe connections in demanding utility environments.

Built for the TESCO #6330 Meter Site Analyzer

Unlock the full testing capabilities of your 6330 with this purpose-built adapter.





TESCO METERING



Walker Cabin

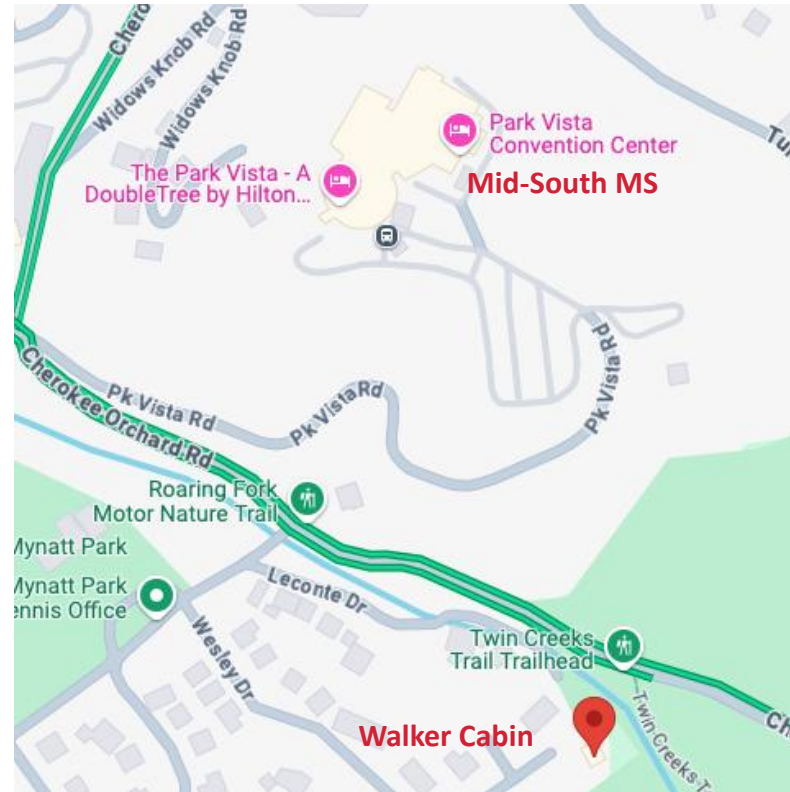
Come Relax with Us after a Day at Mid-South!

WHERE

**The Walker Cabin,
Bottom of the hill
from the Park Vista;
872 Wesley Dr, Gatlinburg**

WHAT

**Corn Hole, Games, Snacks,
Dinner, Beer, Wine & Drinks
and talking about everything
from hunting to Meters
– of course!**



**REACH OUT to anyone on our team if
you have any questions**

Tom Lawton (215) 688-0298

Vernon White (215) 485-0060

Jon Scott (404) 451-8444

John Kretzschmar (864) 590-2883

Harold Kennedy (601) 454-7085

Thank You!
TESCO Metering
925 Canal Street
Bristol, PA 19007
+1 (215) 228-0500

www.tescometering.com

tom.lawton@tescometering.com

ISO 9001:2015 Certified Quality Company
ISO 17025:2017 Accredited Laboratory



Tom Lawton

President & CEO
TESCO Metering