

TESCO METERING

NEW PRODUCTS INTRO AND FEEDBACK TESCOOL 2025

TESCO's Meter School
TESCOOL
July 20-23, 2025

July 23, 2025
8:45 AM – 10:15 AM
Tom Lawton

EVSE Higher Amperage DC Charger Testing Capability:

- Catalog #T4350 to enable testing of DC Chargers up to 350A sustained.
- Catalog #MiTM-350- 350 Amp capable Man-in-the-Middle Cable for use between the T4350, DC charging station and electric vehicle.
- Catalog #PL4150 DC Load Box for use in the back of a Weights and Measures Truck, capable of testing up to 150KW with ramp loading that will work at 400V and 800V.



ACT/DCT Laboratory AC/DC EVSE Test System:

- This system enables the testing and accuracy verification of both AC and DC Electric Vehicle Service Equipment and Field Test Equipment for testing EVSE's in the field.
- The system is rated for 0.04% accuracy for power, and 0.02% for voltage and current.
- Dual-phase AC and DC System with 100A AC Test System and 300A DC Test System.
- Can interface with Tesco TDM via embed PC
- Lab certification to ISO 17025



Updated (BPTM) Back Up Power Transfer Meter Design:

- Automatic transfer to generator and back to utility
- 30A / 7.2kW rating
- Supports 400+ generators and select Evs (IE Ford F150 Lightning)
- LED Indicators for Utility vs Generator Power
- Compatibility with Aclara i210+c and Landis & Gyr Focus meters
- Pending NRTL listing to UL 414 & 1008M



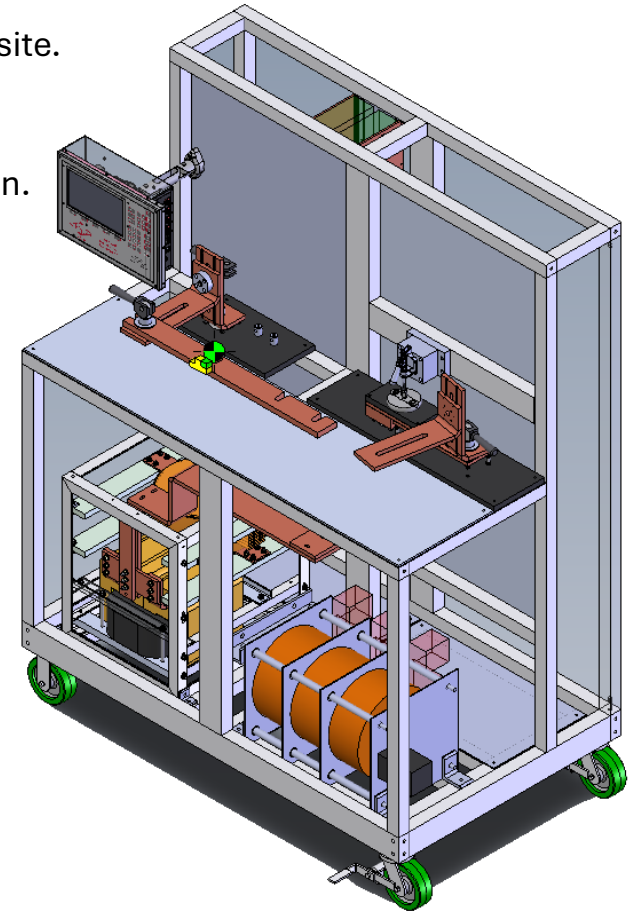
KCTS 8000X:

- Options to upgrade the KCTS 8000 or purchase new.
- Ability to test beyond 10% and 5% rating factors – down to 1% rating factor for newer extended range CTs.
- Electrically compensated burden.
- Tesco Device Manager Integration.
- Includes advanced features such as transformer demagnetization, live burden measurement, and motorized controls.



Advanced KCTS-8000XA:

- Traceable Accuracy down to 1% Rating Factor
 - Ability to test beyond 10% and 5% Rating Factor, now down to 0.5% with traceability to 1%.
 - Validate extended range CTs for greater flexibility of metering and superior billing accuracy at customer site.
- Electronically Compensated Burdens
 - Active Impedance and Power Factor compensation to maintain accuracy down to 1% Rating Factor.
 - Live Burden Measurement displayed on screen and recorded for advanced testing records and validation.
- Improved Safety, Self-Check, and Diagnostics
 - System can detect errors and point to any issues that may arise from invalid test setup.
 - Routine self-check discovers errors before causing costly mistakes.
 - Configurable Interlock safety circuit.
- Simplified Servicing
 - Advanced diagnostics helps to increase uptime and reduce service time, getting the system back to testing CT's faster.
 - Advanced diagnostics also assists operators to quickly locate system errors.
- Meter Manager and TDM Integration
 - Automatically capture test results within establish meter database.
 - Simplify infrastructure overhead.
 - See all your data in one place with analysis tools.
 - Backward compatible serial port for integration with existing data capture.



KVTS Automated:

- Automated testing after primary selection and physical connection.
- Primary ranges from 120V to 48kV.
- ANSI Selectable Burdens: W, X, M, Y, Z & ZZ.
- Self test checks.



P8000:

- Multi-range precision transformer.
- Primary current to 8,000A.
- Taps for all calibration points.
- Actively compensated.
- Traceable to 1%.
- 24" tall, 10" deep, 21" wide on a base with wheels.
- 120# weight.



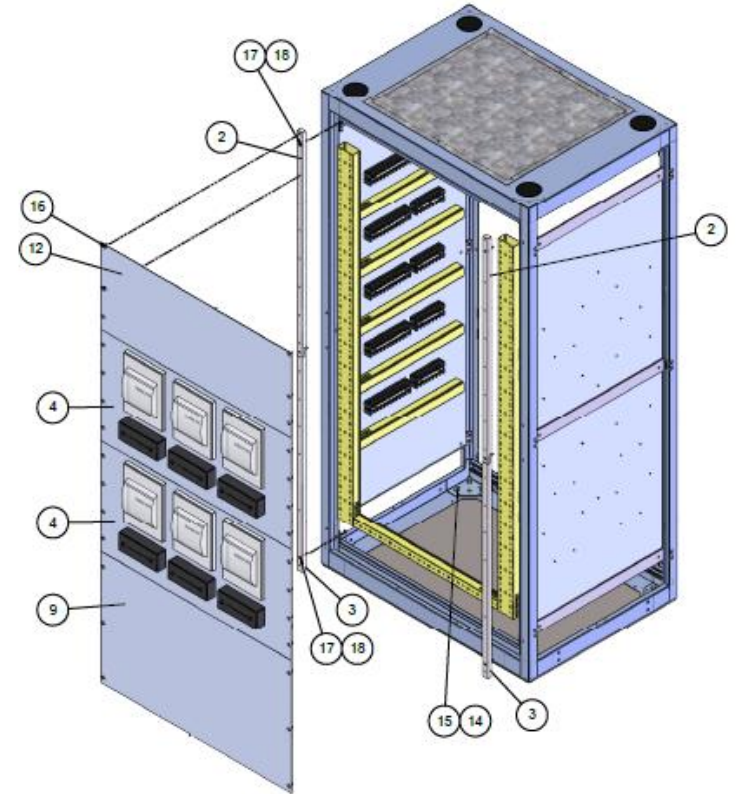
Nighthawk DirectConnect:

- Connects directly with Itron MV-90, Aclara MeterMate, Trilliant PrimeRead, or Trilliant UnitySuite data acquisition software.
 - Can work with any system requested.
- Robust, secure, and efficient bidirectional message delivery mechanism.
- Utilizes same proven LTE hardware as Adaptiv HUB solutions.
- Does not require any middleware – DirectConnect to MV-90 (or other host).
- Designed to work with public carriers or with private networks. Utilities incur no communication costs if they use their own private network.



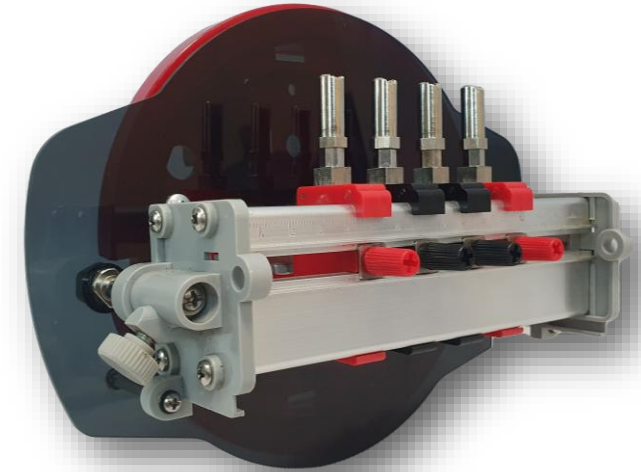
Substation Panel:

- Ability to design customer substations panels to suit utility metering needs.
- Example of a recently installed panel for panel board meters with customer wiring schema.



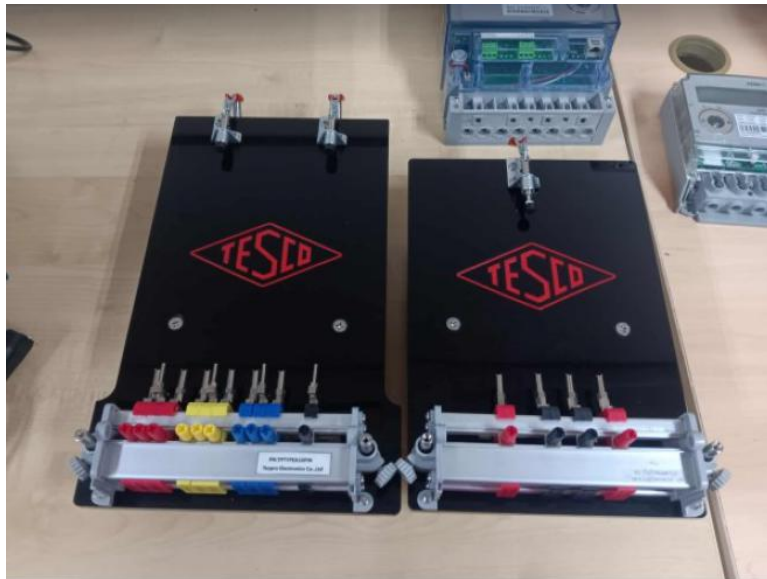
IEC Meter Adapter V1:

- An IEC Meter Adapter makes testing IEC meters possible with the NextGen meter test boards.
- Comes in different versions to cater to the various types of IEC meters.
- We have adapters for Single Phase, Three Phase, EDMI, and Landis+Gyr meters.



IEC Meter Adapter V2:

- An IEC Meter Adapter makes testing IEC meters possible with the NextGen meter test boards.
- Comes in different versions to cater to the various types of IEC meters.
- We have adapters for Single Phase, Three Phase, EDM1, and Landis & Gyr meters.
- Compression connection for ease of mounting IEC Meters.



Test Switch Adapter:

- The Test Switch Adapter easily wires in a test switch into a transformer-rated meter box that doesn't currently have one.
- Simply remove the meter, plug it into the adapter, then plug the adapter into the socket to use the test switch to facilitate meter/site testing.
- Designed as a handy, portable accessory for the 6330, the 290-13T (pictured) also comes in other versions for different service configurations: 290-8T, the 290-6T-4S, and the 290-6T-3S.



FTS-2990:

- A portable, rugged test station for when you are out in the field and need all the functionality of a 2990.
- The FTS-2990 can be transported via wheels or handles.
- A fully ANSI compliant test board, the FTS-2990 offers complete testing of all meters under the widest range of test conditions. The new waveform generator has all waveforms called out in ANSI C12.20-2015 (pub. 4/2017). All common electromechanical and solid-state meters up to 50 amps can be tested with the FTS-2990 using the single voltage and three isolated current sources.



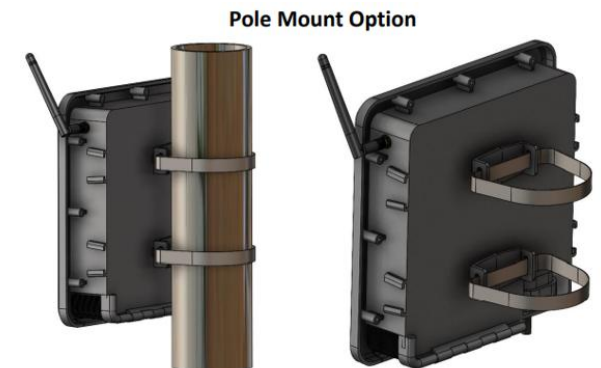
T3 Turbo Tester:

- Uses customer voltage - 120V Single Phase to 480V Three Phase source.
- Will generate up to three phases of current in synch with the applicable voltages.
- Same high accuracy metrology as CAT 2990 and CAT 3050.
- 1S 2S 12S 13S 14S 15S 16S 25S 32S Meter Forms.
- Lightweight with user friendly interface for ease of field testing.



Nighthawk Fiber Hub:

- The Fiber HUB product is a self-contained mesh HUB device with a wired Ethernet uplink.
 - Fiber hub is Adaptiv compatible.
 - Acts as a cost-effective collector for multiple devices.
- Ideal for utilities who have mostly fiber throughout service territory.
 - Federal government incentivizing rural co-op fiber to the home.
 - Utilities looking for applications to use the deployed fiber.
- Advanced Outage Management power fail detection.
 - Configurable blink and sustained outage event thresholds, event logging and data upload.
- Rechargeable Battery Backup of 10 minutes to allow for last gasp transmissions.
- Supports OTA firmware upgrades to associated mesh devices.
- Robust end to end security and encryption.



6330 Substation Meter Test Accessory:

- Direct connection to smaller ABB FT-1 test switches.
- Allow interconnection and use of 6330 for substation meters.
- Interoperability to varied meter types and forms via mini test switches on panel boards.
- Unlock full 6330 capability and ability to site test at the substation panel board meter.



Ring Style Meter Sockets:

- Now offering pre-wired boxes in ring style cover designs.
- Four-week lead times.
- Available in steel or aluminum with single or split-piece designs.
- Configurable 4-10 pole test switches rated to 600 Amps.
- Designed for 480V Delta and other transformer – rated services.
- Factory pre-wired to your colors / standards.
- Compliant with ANSI C12.7



Tornos DT13 Machine:

- High precision, high accuracy Swiss Style CNC machine tool.
- Can produce high tolerance parts in difficult to machine materials (Inconel) and high-volume steel and brass parts at high speed.
- Latest generation machine coupled with technological features to eliminate outsourcing and provide certainty over our own manufacturing.
 - Polygon Machining – mill flats while turning.
 - Threading with special DIE to eliminate single point.
 - High RPM – 2-3x faster removal.



BABA Certification:

- Build America, Buy America Act.
- Domestic content requirements for materials and manufactured products.
- Industry challenges regarding the complexity of BABA rules has led NEMA developing a “Make it American” Program.
- Standard to offer BABA compliant products.
- TESCO is in the first cohort of the standard.



NEMA Make It American™ BABA Registry

The NEMA Make It American™ BABA Registry is a dynamic, real-time directory that provides access to information about facilities certified to NEMA's supply chain evaluation process standard (NEMA 70901-2024) and products licensed to NEMA's BABA Product Specifications.

Company	Facility City	Facility State	Facility Certification(s) and BABA Product License(s)	NEMA BABA Product License(s)	Status
Eaton	Cleveland	TN	NEMA-00-6		Active
Master Control Systems, Inc	Lake Bluff	IL	NEMA-00-7		Active
Schneider Electric	Fairfield	OH	NEMA-00-4		Active
Siemens Industry, Inc	Spartanburg	SC	NEMA-00-3	LVDE-01-01	Active
Southwire Company	Carrollton	GA	NEMA-00-1	WC-02-01	Active
	Carrollton	GA	NEMA-00-2	WC-02-01	Active
TESCO Metering	Bristol	PA	NEMA-00-5	LVDE-01-02	Active

- TESCO is one of the first manufacturers to achieve certification in the NEMA new **Make It American™** program. As a pilot partner in the program, TESCO is helping set the benchmark for domestic manufacturing compliance under the **Build America, Buy America Act (BABA)**—reinforcing its longstanding role as the trusted metering solutions provider to the electric utility industry.
- TESCO received both Supply Chain Process Certification and Product Certification, validating its ability to meet stringent domestic content requirements through a third-party audit. These designations underscore TESCO's vertically integrated manufacturing model, where design, engineering, machining, and manufacturing take place in the United States.

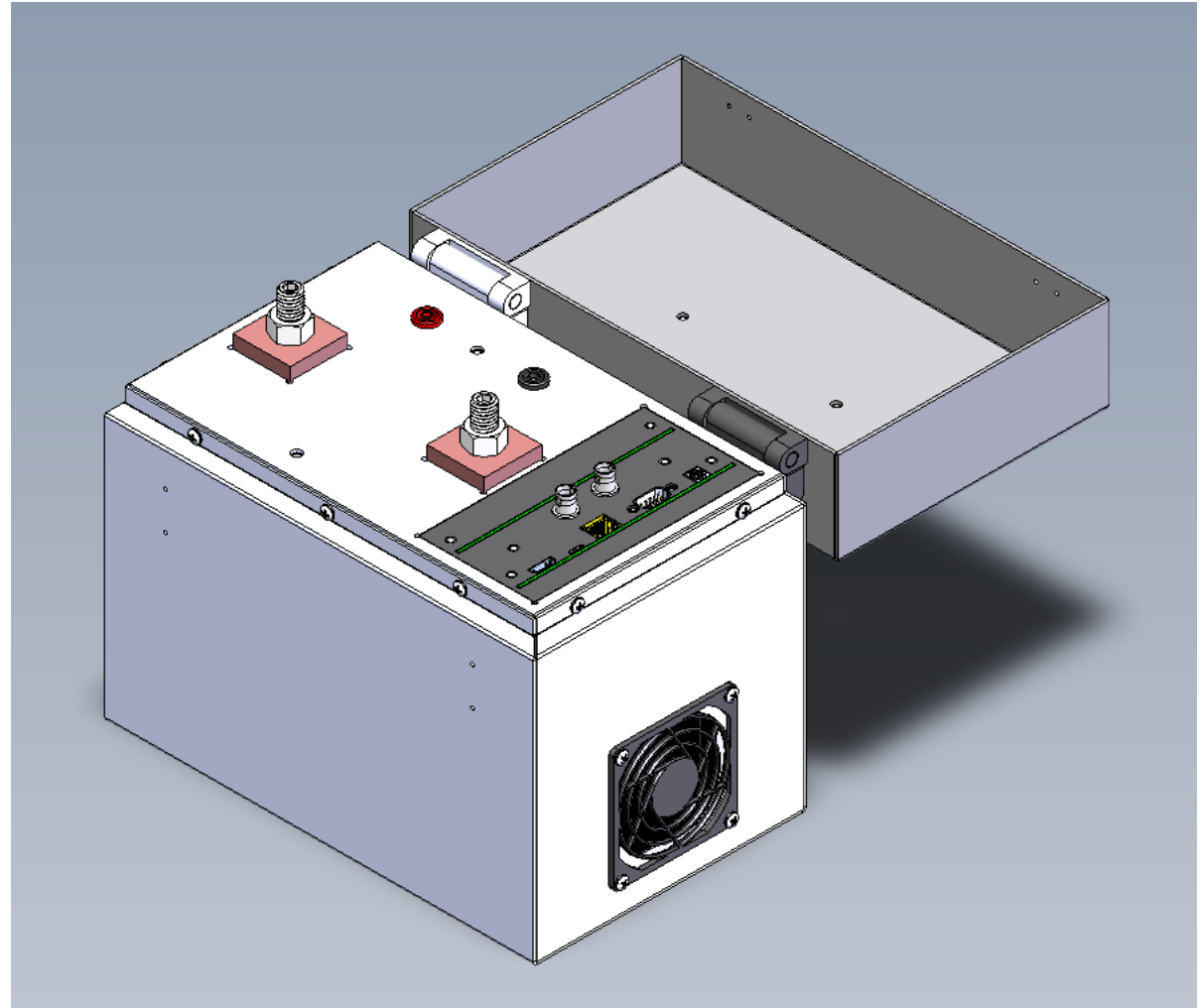
Key highlights of TESCO's U.S. manufacturing capabilities:

- Made in the USA: All core metering products are manufactured at TESCO's Bristol, PA facility.
- Vertically Integrated: From precision machining to final assembly, TESCO controls the full product lifecycle.
- Certified Quality: ISO 9001 & ISO 17025 certifications ensure consistency, traceability, and lab-grade accuracy.
- Customer-Specific Solutions: TESCO's engineering team develops and builds custom testing systems no other supplier can match.
- Reshoring Support: With expanded capacity in its Dial Machine Division, TESCO partners with companies pursuing BABA-aligned U.S. production strategies.



DC Transfer Standard:

- A portable, NIST-traceable DC reference standard that will be used to do field calibrations of EVSE test equipment.



Nighthawk 1NCE and Monogoto:

- Agnostic sim for multiple carriers.
- Worldwide sims for international coverage.
- Integration with WWXD modems for universal communications board – domestic and international.
 - Singular modem and sim for all carriers and regions.
 - Automatic network registration – closest tower / strongest signal – vendor agnostic.
- LTE with 5G capabilities.
- Enhanced reliability via industrial sim manufacturing.



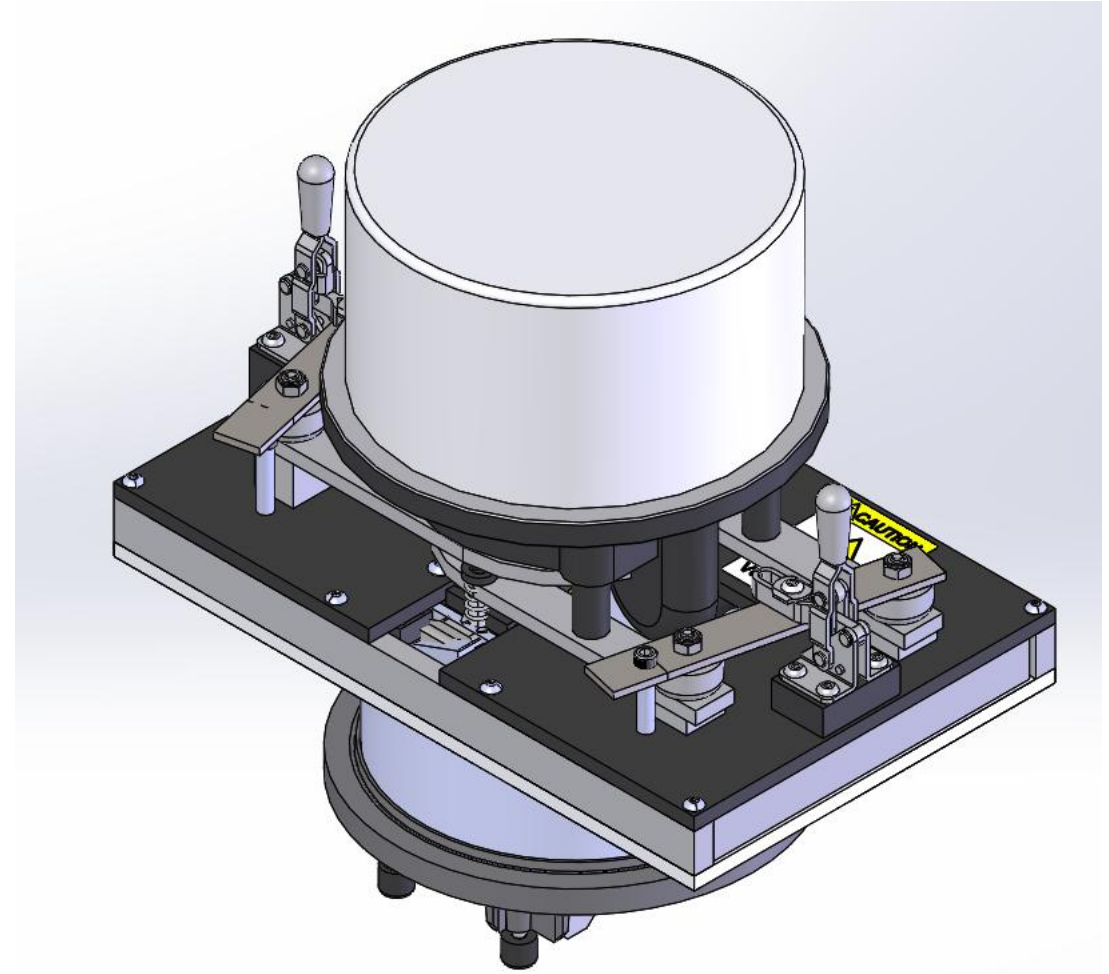
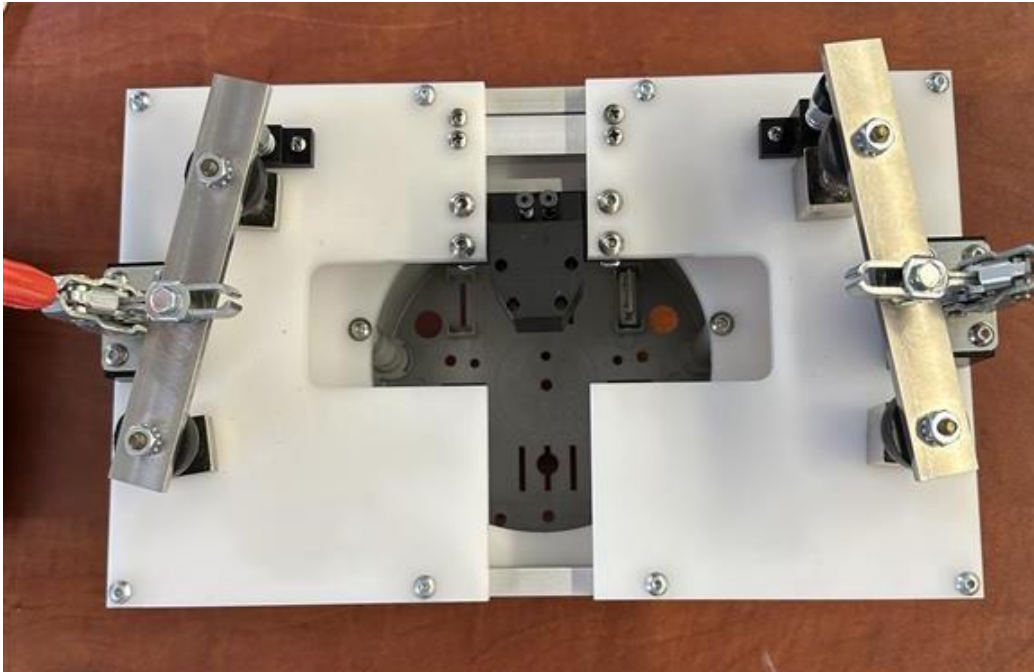
Antenna Enhancement for ERT:

- Multi-band high gain antenna.
 - 4.7DBI at 900Mhz band.
- Expanded ERT coverage for expanded coverage.
 - Expanded range from 100-250ft through 250-500ft of proximity.
- Meter agnostic & simplistic field installation.



Touch Safe K-Base Test Adapter:

- Touch safe adapter for K-Base meters.
- No energized components without a K-Base meter set.
- Mechanical actuation for de-energized contacts.



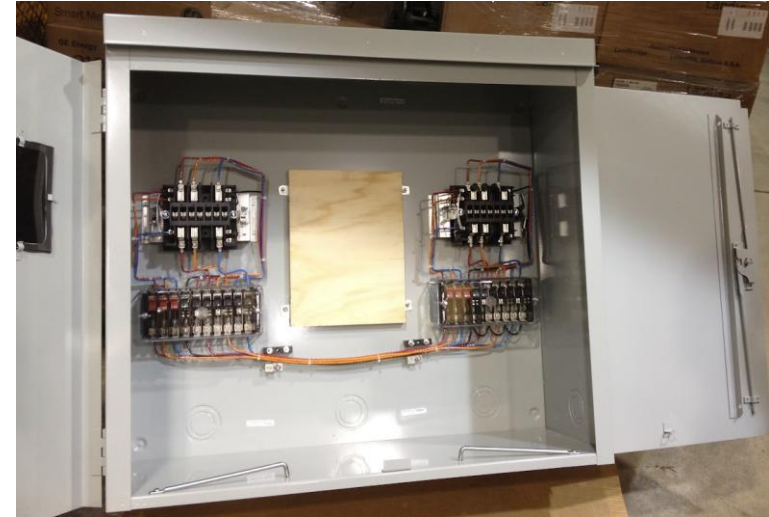
Intertie Tester:

- Add-on module to CAT 6330.
- Will generate local voltage that the CAT 6330 can sync its current output to.
- True 3-phase source.
- Will give required voltage and current isolation.
- Service selections:
 - 69/120Y
 - 120/208Y
 - 240 delta
 - 480 delta
 - 277/480Y
- Simple connections to make setup easier.



Double Door Enclosures:

- Available for primary and backup meters for redundant metering for tie points, generation, high revenue installations.
- Center backing for communication and other equipment or auxiliary power plug.
- Single Phase and Three Phase offerings for transformer rated metering.
- Compatible with 4 – 15 terminal.
- Supports 1- 10 pole test switches.
- Powder coated steel or aluminum enclosures.
- Pre-wired to your colors / standards.
- Offered with four-week lead times.



Small Transockets:

- Single Phase and Three Phase transockets offer a single enclosure for current transformer metering.
- Singular socket for CTs, test switch and socket.
- Compatible with 4 – 15 terminal sockets and ratings to 600 Amps.
- Supports 1- 10 pole test switches.
- Powder coated steel or aluminum enclosures.
- Pre-wired to your colors / standards.
- Offered with four-week lead times.



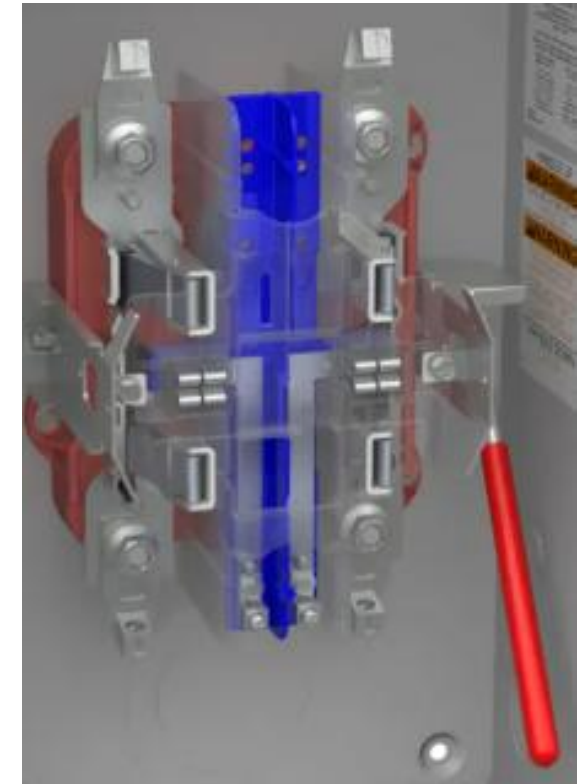
Primary Cabinets:

- Powder coated steel or aluminum enclosures.
- Ability to hold CTS and PTs for primary metering.
- Offered with four-week lead times.



Lever Bypass Sockets:

- 200 Amp and 320 Amp Rating.
- Ability for ring and ring less style sockets.
- Powder coated steel or aluminum enclosures.
- Offered with four-week lead times.



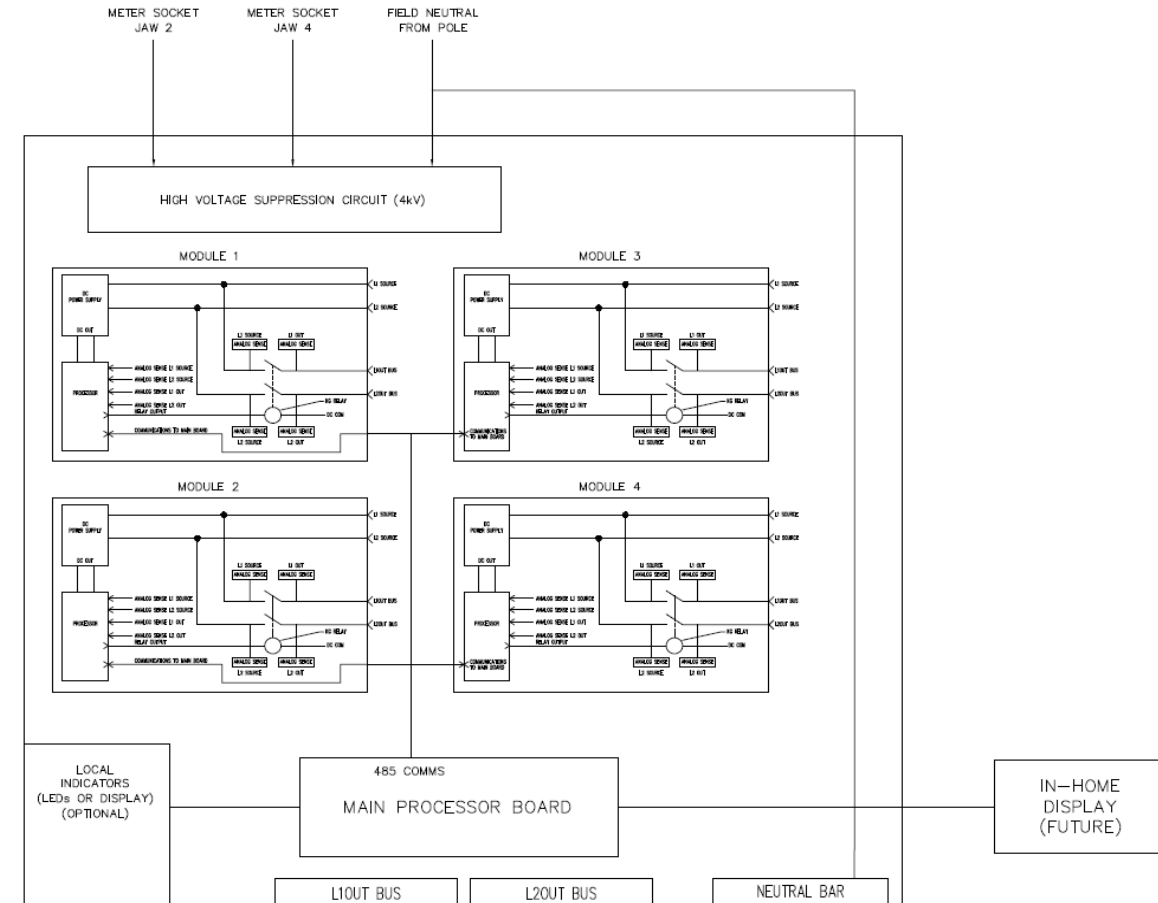
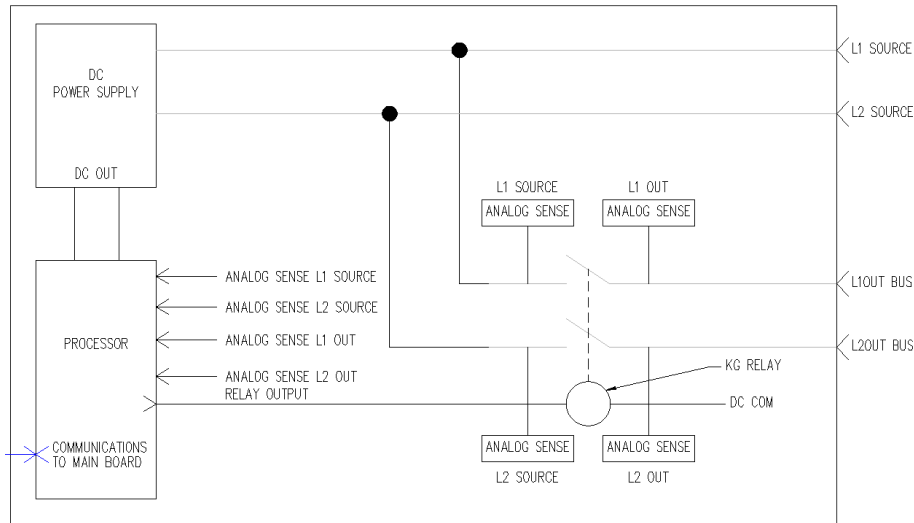
DC Meter Box:

- Initially made for PG&E to replace electro-mechanical DC watthour meters for elevator services.
- Available in steel and aluminum enclosures.
- Wire connections match existing installation.
- Four-week lead time.
- Ability to standardize for your DC metering and AMI communications needs.
- 100 Amp DC rating.



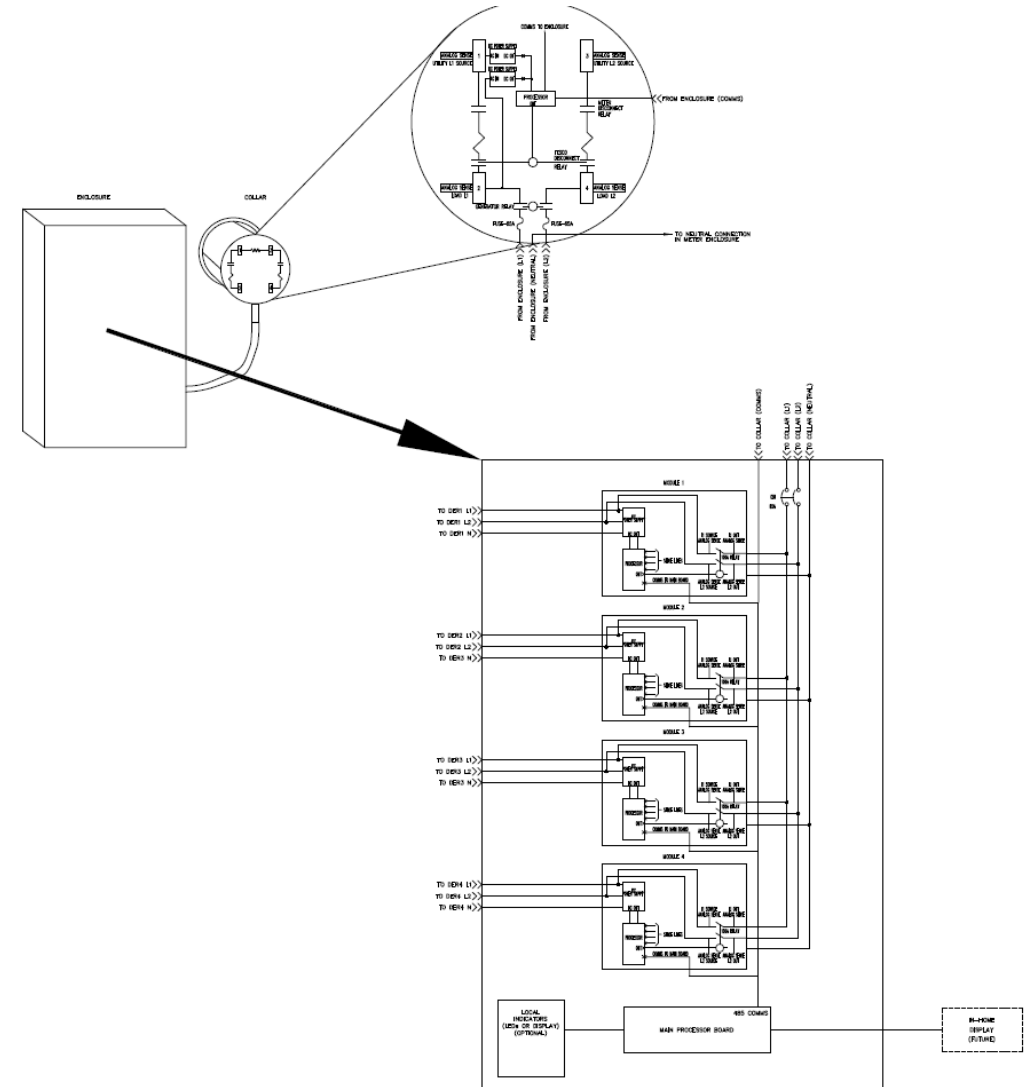
Next Generation Backup Power Transfer Socket (BPTS):

- Support for 60A Branch Circuits.
- Whole home backup capability.
- Modular design.
- Similar in height and size to existing meter sockets.
- No adapter needed – isolation and connections securely in the socket.



DER BPTA Multiplexer:

- Based on existing BPTM design.
- Automatic transfer switch for up to 4 DER inputs.
- Each DER input rated up to 55A.
- Easy installation.
- Built-in utility-side surge protection.
- UL and NEMA/ANSI tested and approved.
- Will have configurable switching algorithms based on priority, time of day, etc.
- Optional in-home customer interface panel.



Suggestions from the group for other items needed for the marketplace?

