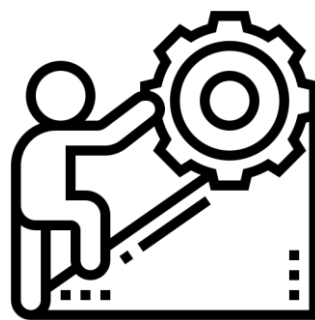


TESCO METERING

# Meter Manager Software

Metering-Centric Asset, Quality, Test, and  
Inventory Management Software

Prepared by Kevin Tory & Andrew Kaminsky, TESCO



# Industry Challenges

# Industry Overview & Challenges

**Manual  
Siloed  
Processes**



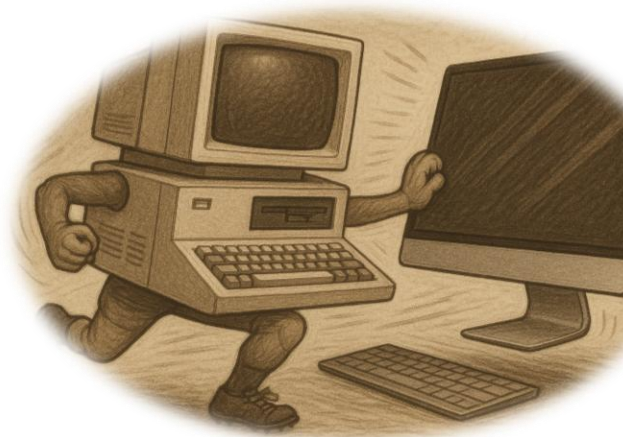
**Maintaining  
Data  
Consistency  
Across  
Systems**



**Inventory  
Management  
Challenges**



**Legacy  
Systems  
Blocking  
Modernization**





# Enterprise Software Benefits

# Benefits of Using Enterprise Software in Metering

- Use the right tool for the job – SAP / Maximo / Oracle CC&B to store data across the entire enterprise, Meter Manager for Line-of-Business activities
- Meter Manager has been designed to seamlessly integrate with Enterprise software, pulling and pushing data back and forth as needed
- Meter Manager is 2 to 3 times faster than ERPs for key activities, including acceptance testing of new meter shipments, receiving and testing returned meters, processing RMAs, and inventory tracking
- Meter Manager is tailor-made for metering activities, with metering-specific data elements and validations
- No ERP functionality is lost, as Meter Manager can sync with the ERP, keeping it updated





TESCO METERING

---



# Target Users



# Target Users Within the Utility



IT & Integration  
Teams



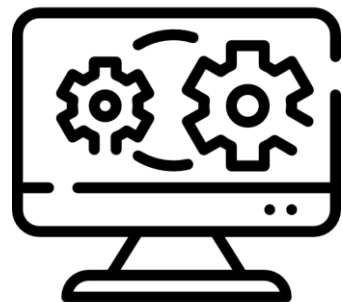
Meter Shop &  
Field Technicians



Compliance officers  
and asset owners



Warehouse/Inventory  
Managers

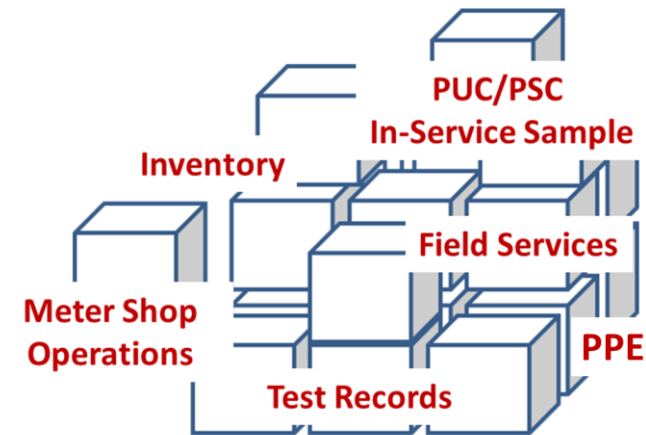


# Software Overview



# Meter Manager Software Overview

- Purpose-built metering lifecycle software
- Full support for AMI devices, including deep integration with HES and MDMS
- Deployment Options: On-prem, Azure/AWS Cloud, or Private Cloud
- Available as a licensed purchase or as a monthly subscription
- TESCO can install and support Meter Manager in your infrastructure



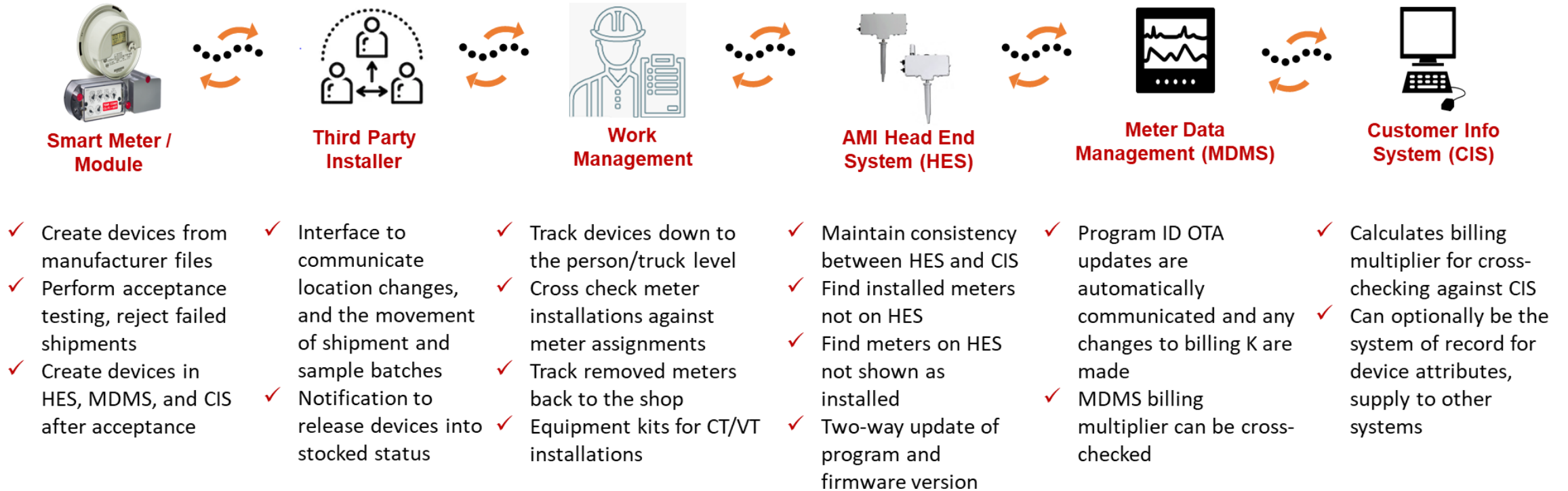
# Asset Management for EVERY asset under management

- Leading asset and quality management system for metering and AMI devices
- Proven track record of on-time successful deployments
- Only enterprise-grade metering-specific system available
- **Meter Manager is designed to integrate with SAP, Oracle, and other enterprise systems**
- Integrations can be custom-built without customizing the core software.
- Meter Manager can repurpose existing file-based and web service interfaces to your ERP, CRM, WMS, and other systems, allowing a drop-in replacement of your existing asset management system with minimal rework.



# Add Value Throughout the AMI Portfolio

## Architected with touchpoints to efficiently process core information



75% of our Utility Customers have SAP or Oracle

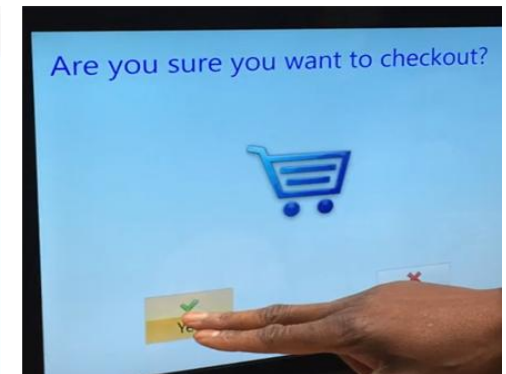
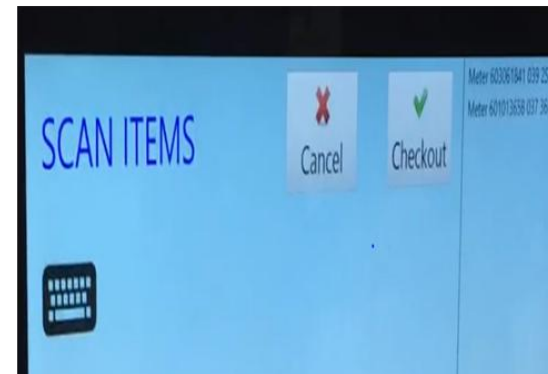
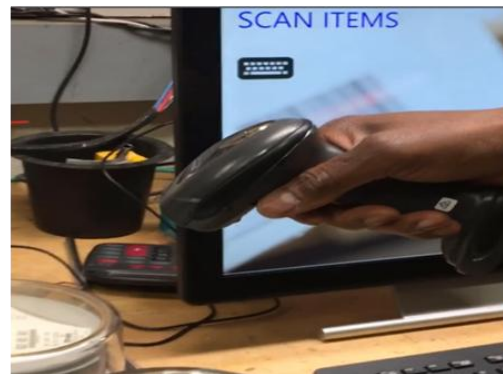
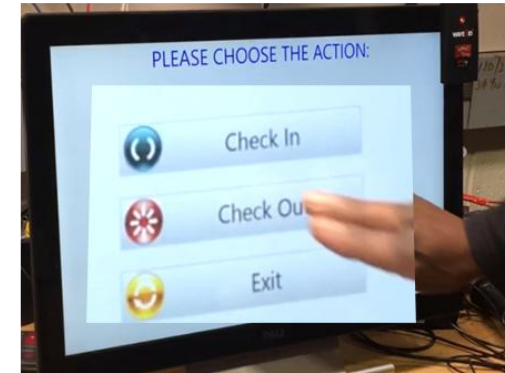
25% of our Utility Customers have a legacy system or a CIS provided by NCIS or a similar organization.

# Controlling Inventory and Device Consignment

## Built-In Feedback Loops catching potential problems earlier in the workflow



Meter Manager records the consignment to the employee and places the device back into inventory when the un-installed device is checked back in.



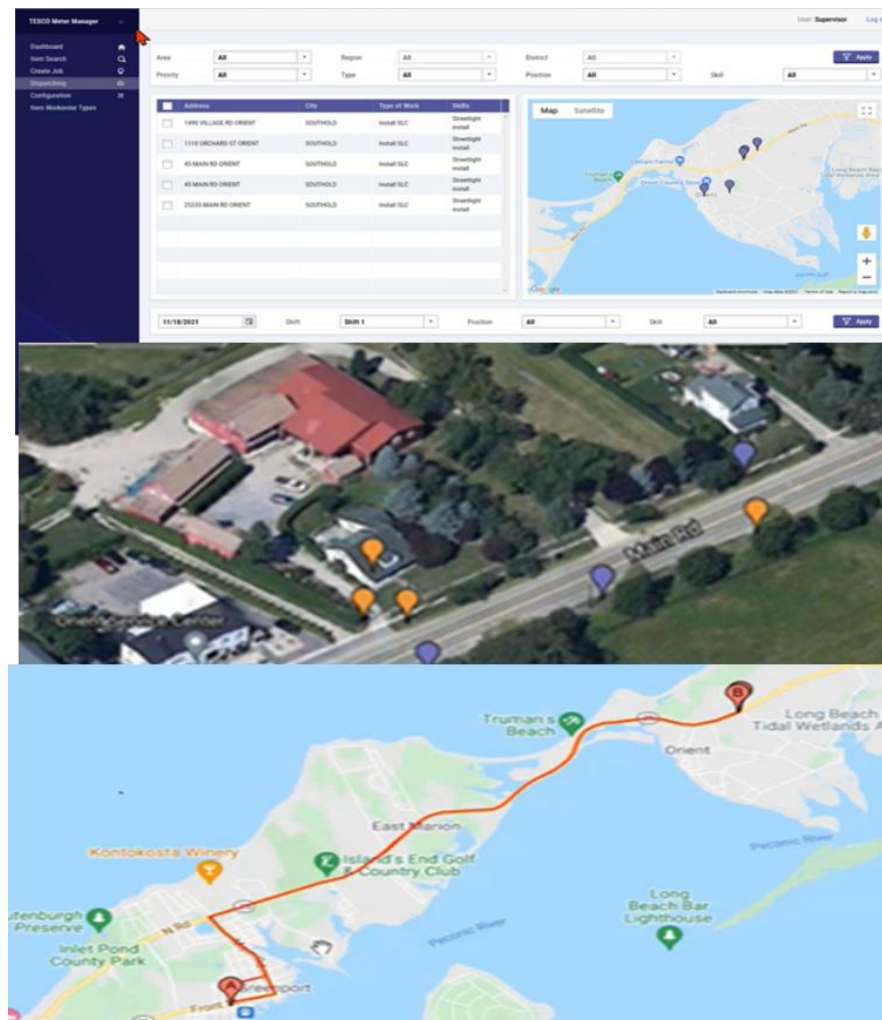




TESCO METERING

# Metering-Centric Field Service Management

- ✓ Skills based work order assignment
- ✓ Configurable tasks for each work order and/or equipment type
- ✓ Schedule a technician on-the-fly and instantly notify and update their schedule for re-routing
- ✓ Optimized routing that recommends the best and safest route for any location with the effort to complete work order (complex / simple) factored into the schedule
- ✓ Works standalone and when network available reconnects automatically and syncs data
- ✓ Increase field work's accuracy and efficiency through GPS



Please Take a Few  
Minutes To Provide  
Feedback About The  
Course & Instructor

Track 5 - Roadmap for Nighthawk  
Integration with Meter Manager  
72225 1:00PM Tory/Kaminsky





# Thank You!

**TESCO Metering  
925 Canal Street  
Bristol, PA 19007  
+1 (215) 228-0500**

**[www.tescometering.com](http://www.tescometering.com)**

**ISO 9001:2015 Certified Quality Company  
ISO 17025:2017 Accredited Laboratory**