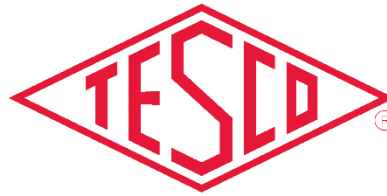


METERING LEADER SINCE 1904



THE EASTERN SPECIALTY COMPANY

# BASIC ELECTRICITY

*TESCO's Meter School*

**TESCOOL**

*July 21-24, 2024*

*Monday July 22*

10:30 AM – 12:00 PM

Eric Sassi

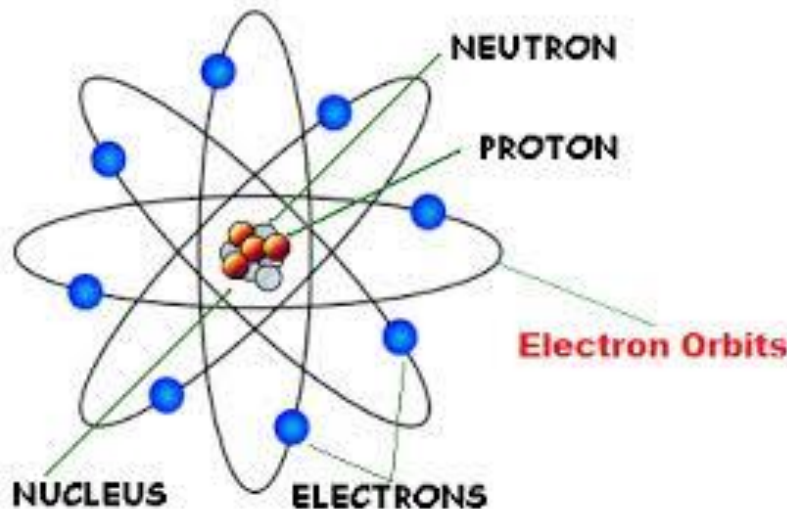


# SOME BACKGROUND

## • The Atom

Video

- All matter is made up of atoms.
- Atoms are composed of three particles
  - Protons – with a positive charge
  - Electrons – with a negative charge
  - Neutrons – with no charge



Each atom has the same number of protons and electrons. That number is called the atomic number of the atom and determines the element.

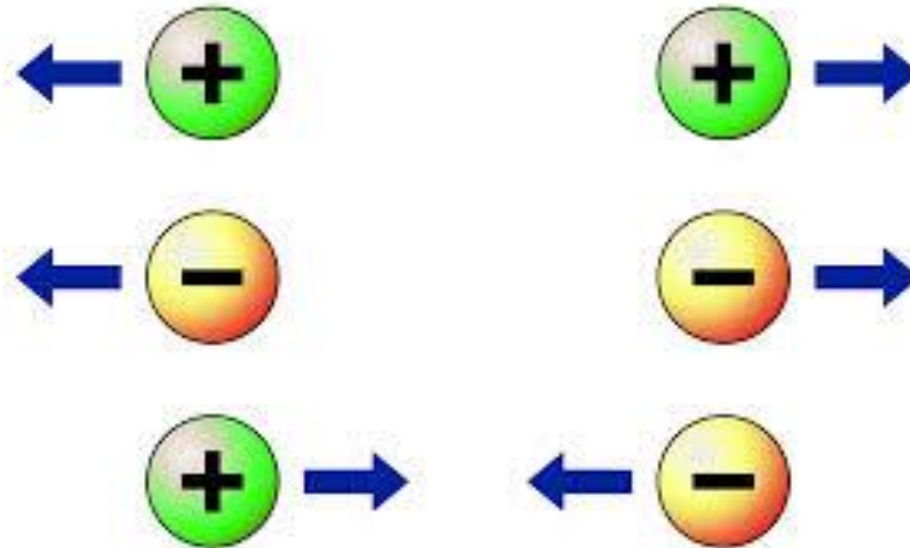
For example: If the atomic number is 8 as shown in the figure to the left the element is Oxygen (O).



# SOME BACKGROUND

- **Charge**

- Opposite charges attract each other.
- That is what holds the electrons of an atom to the protons of the nucleus.
- Like charges repel each other.



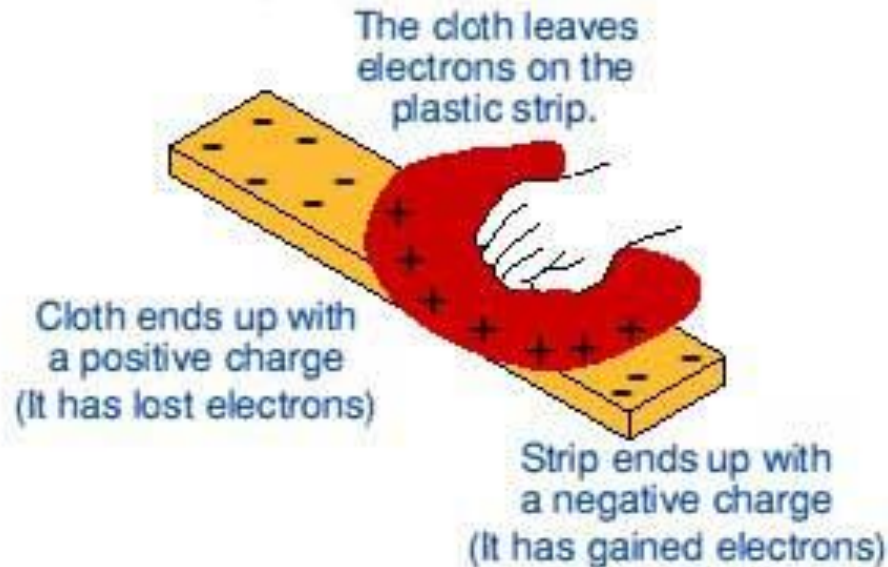
# MAN “DISCOVERS” ELECTRICITY

Volage

- **Static Electricity**

- What is this strange force? “Static” electricity.
  - Rubbing the cloth across an insulator causes electrons to move from one object to the other. This leaves one object with more electrons than it should have and the other with less. The cloth has less so it becomes positively charged.

Static electricity - rubbing





# "DYNAMIC" ELECTRICITY

---

- **Current – Electrons flowing from one place to another**
  - If one object has a negative charge and another has a positive charge Electrons will flow from the negative to the positive if they are connected

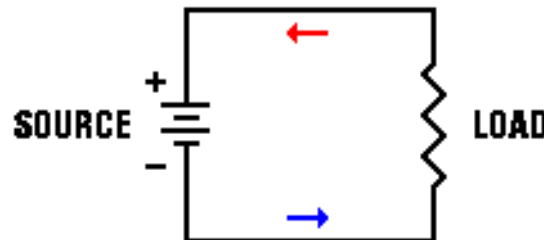




# PRACTICAL ELECTRICITY

## • Direct Current – DC

- In our “zap” electrons briefly travelled from the negative object to the positive object.
  - Until the excess electrons ran out the current flowed.
  - Once they ran out the current stopped.
- A battery is a device that continuously supplies electrons through a chemical reaction.
  - Hook the positive side of a battery through a load to the negative side and electrons will flow.
  - This is a current (a flow of electrons)
  - Since it goes in only one direction it is called **DIRECT CURRENT**





# PRACTICAL ELECTRICITY

- **Direct Current – DC**

- Sources of direct current include
  - Batteries – electrons are supplied by a chemical reaction
  - Thermocouples – electrons are supplied by heat
  - Photovoltaic cells – electrons are supplied by light
  - Electronic Power Supplies – Generally transform AC electricity to DC electricity because electronic devices run off of DC electricity
- There always has to be some form of energy to produce the electrons for the current
- Modern electronic devices all run off of DC electricity





# DC ELECTRICITY

- **Basic Concepts**

- **Current – The flow of electrons**
  - The general convention is that a POSITIVE current is a current that flows from the positive terminal of the source to the negative terminal of the source
  - Why – Electrons actually flow the other direction?
    - Scientists made up the conventions long before they discovered electrons, they got it backwards and we still use the convention today.
- **Voltage – A measure of the potential difference between two points**
  - Voltage is to current, as the pressure in a pipe is to the water
  - The higher the voltage (potential difference), the easier it is for current to flow
- **Impedance – Something which resists the flow of current.**
  - Resistor – The most common and simplest impedance
  - Capacitor – An impedance which stores the electrons as they try to flow through
    - Energy is stored in an electric field
  - Inductor – An impedance which resists the change in current flowing through the device
    - Energy is stored in a magnetic field





# BASIC ELECTRICAL UNITS

---

- Charge – Coulombs
  - “Q” – 1 coulomb =  $6.2415 \times 10^{18}$  electron charges
- Current – Amperes
  - “I or A” – 1 ampere = 1 coulomb per second of charge flow
- Voltage – Volt
  - “V or E” – The potential difference required to do 1 joule of work
- Impedance – Resistance - Ohm
  - “R” – Resistance
  - Ohm’s Law -  $V = IR$
  - One volt applied across one ohm results in 1 ampere of current.



# BASIC ELECTRICAL UNITS

---

- Impedance – Capacitance - Farad
  - “C” – Capacitance
- Impedance – Inductance - Henry
  - “L” – Inductance
- Power – Watt
  - A rate of energy consumption. A measure of work performed.
  - For DC electricity = product of voltage and current
- Energy – For Electricity – Watt-Hours (DC ONLY – AC IS MORE COMPLICATED)
  - The energy when one ampere flows with a potential of one volt for one hour



# BASIC ELECTRICAL LAWS

---

## Ohms Law

Voltage = Current  
times Resistance

$$V = I \times R$$

THE MOST USEFUL  
AND THE MOST  
FUNDAMENTAL OF THE  
ELECTRICAL LAWS





# BASIC CONCEPTS: ELECTRICITY AND WATER

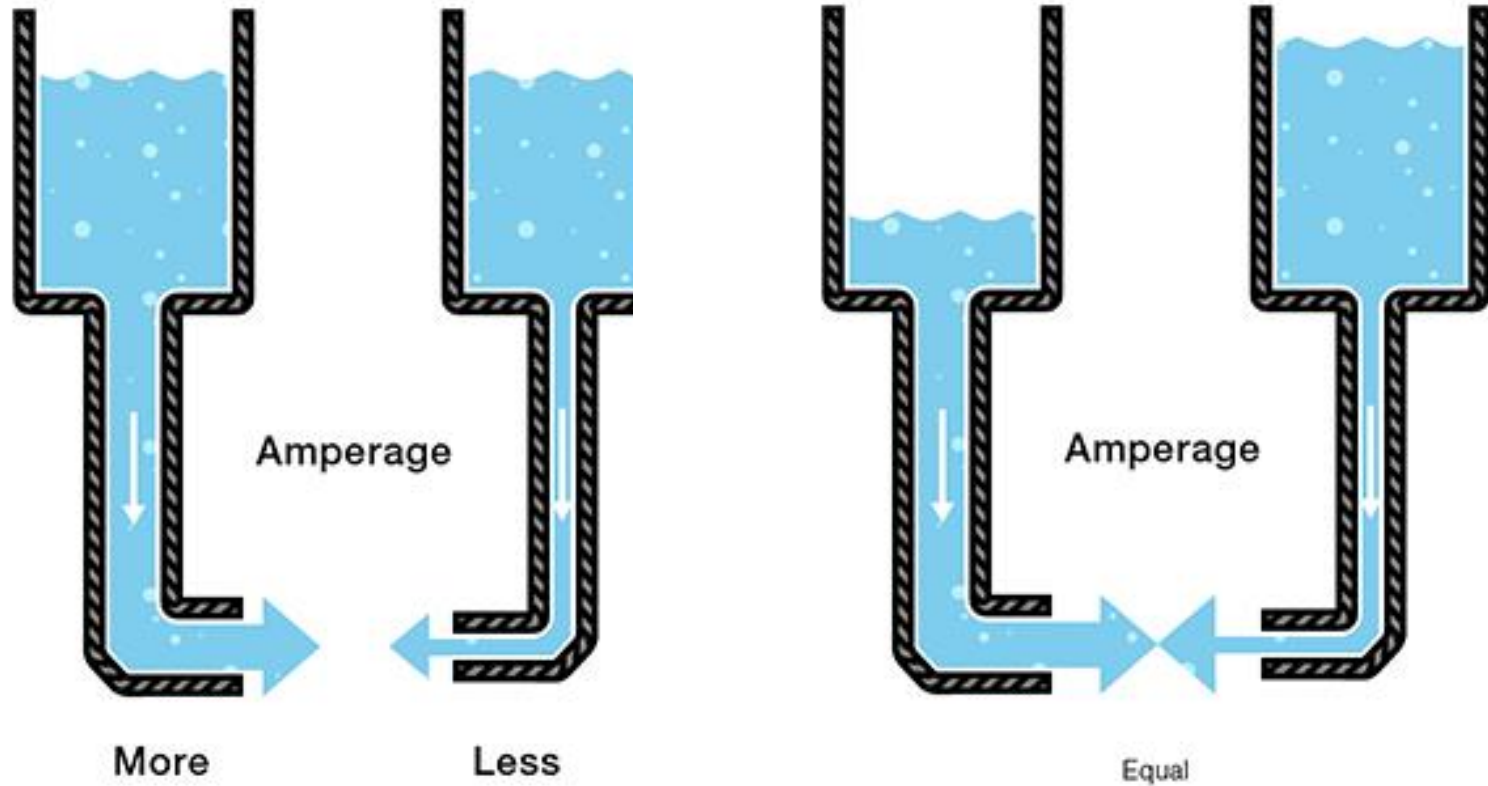
---

## Comparing Electricity to Water flowing from a hose

- Voltage is the equivalent of the pressure in the hose
- Current is water flowing through a hose (coulombs/sec vs gal/sec). The water in a system is the “charge” (coulombs)
- Impedance(Resistance) is the size of the hose. The nozzle would provide a change in resistance.
- Power is how fast water flows from a pipe (gallons per minute vs kilowatts). Power is a rate of energy consumption

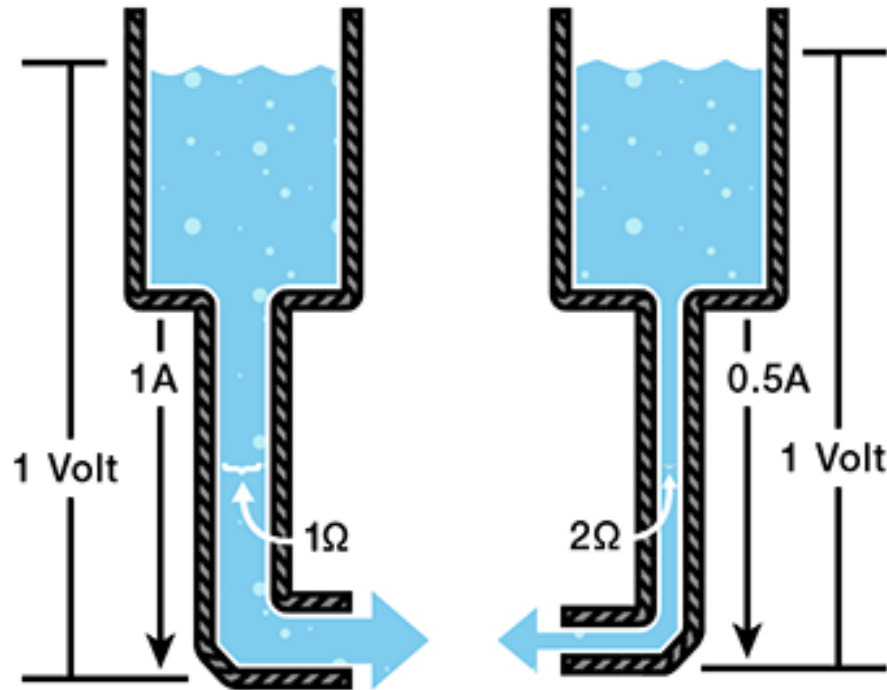


# BASIC CONCEPTS: ELECTRICITY AND WATER

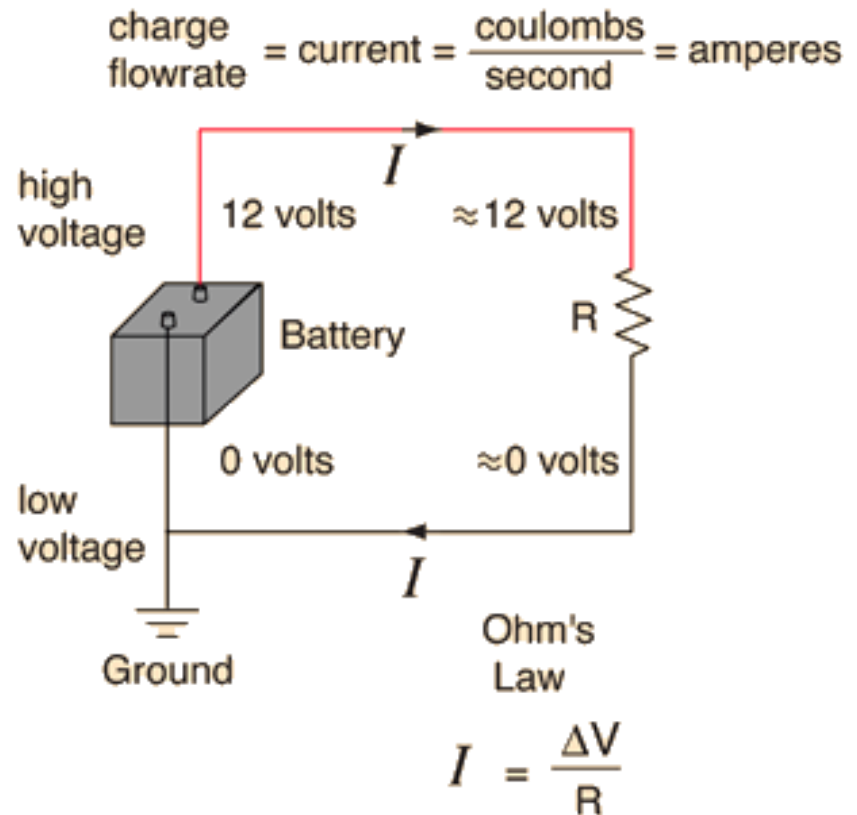
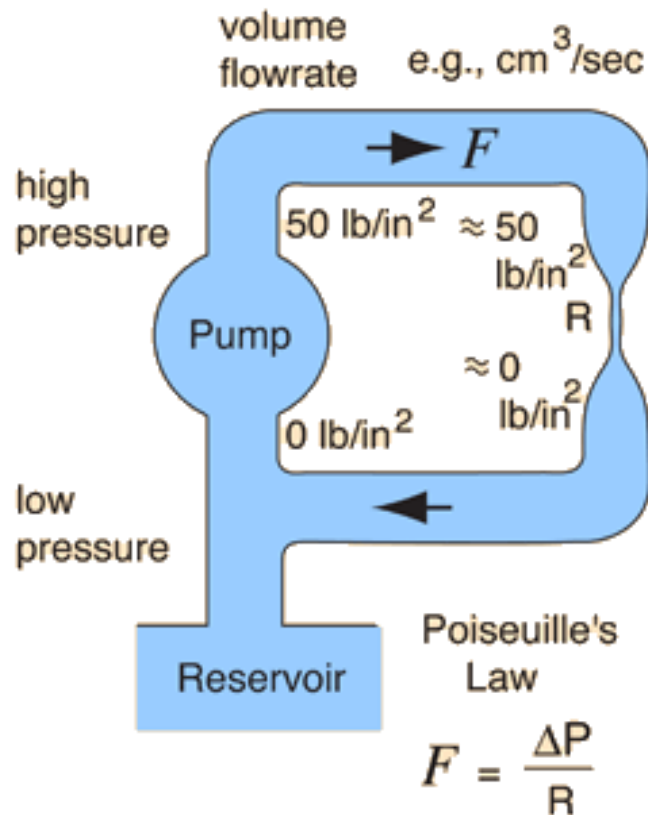




# BASIC CONCEPTS: ELECTRICITY AND WATER



# PRACTICAL ELECTRICITY





# BASIC ELECTRICAL LAWS

---

- Ohms Law Examples

- If  $V = 20$  volts and  $I = 5$  amperes what is the resistance?

$$R = V / I = 20 / 5 = 4 \text{ ohms}$$

- If  $R = 20$  ohms and  $V = 120$  volts what is the current?

$$I = V / R = 120 / 20 = 6 \text{ amps}$$

- If  $I = 10$  amperes and  $R = 24$  ohms what is the voltage?

$$V = I \times R = 10 \times 24 = 240 \text{ volts}$$

- Problem: If  $V = 240$  volts and  $R = 6$  ohms what is the current?

$$I = V / R = 240 / 6 = 40 \text{ amps}$$





# BASIC ELECTRICAL LAWS

## 3 Phase power

Power is Voltage x Current

- Power = Voltage x Current =  $V \times I = I^2R = V^2/R$

Voltage (volts):

$$V = I \times R$$

$$V = P/I$$

$$V = \sqrt{(P \times R)}$$

Current (amps):

$$I = V/R$$

$$I = P/V$$

$$I = \sqrt{(P/R)}$$

Resist.(ohms):

$$R = E/I$$

$$R = P/I^2$$

$$R = V^2/P$$

Power:

$$P = V \times I$$

$$P = I^2 \times R$$

$$P = V^2/R$$



# BASIC ELECTRICAL LAWS

---

- Power = Voltage x Current =  $V \times I = I^2R = V^2/R$ 
  - If  $V = 20$  volts and  $I = 8$  amperes what is the power?  
 **$P = V \times I = 20 \times 8 = 160$  watts**
  - If  $R = 5$  ohms and  $V = 120$  volts what is the power?  
 **$P = V^2/R = 120 \times 120 / 5 = 2880$  watts**
  - If  $I = 10$  amperes and  $R = 20$  ohms what is the power?  
 **$P = I^2R = 10 \times 10 \times 20 = 2000$  watts**

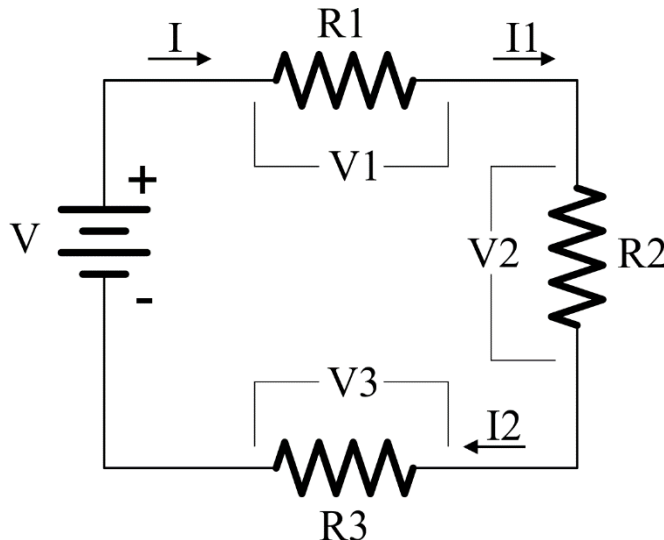
**1 kilowatt (kW) = 1,000 watts**

**1 megawatt (MW) = 1,000,000 watts**



# BASIC ELECTRICAL LAWS

- Kirchoff's Voltage Law (KVL)
- The sum of the voltages around a circuit loop is zero.



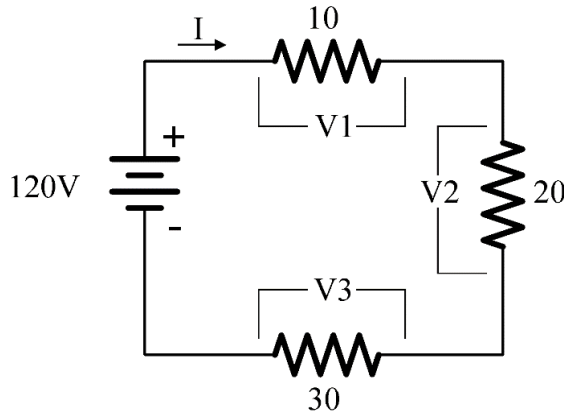
**Resistors in  
series add**

$$V = V1 + V2 + V3 = I * (R1 + R2 + R3) = I1 * R1 + I2 * R2 + I3 * R3$$
$$I = I1 = I2 = I3$$



# BASIC ELECTRICAL LAWS

- Kirchoff's Voltage Law (KVL) – PROBLEM #1



**What is the current in the circuit?**

**What are V1, V2, V3?**

$$I = V / R = V / (R1 + R2 + R3) = 120 / (10 + 20 + 30) = 2 \text{ amperes}$$

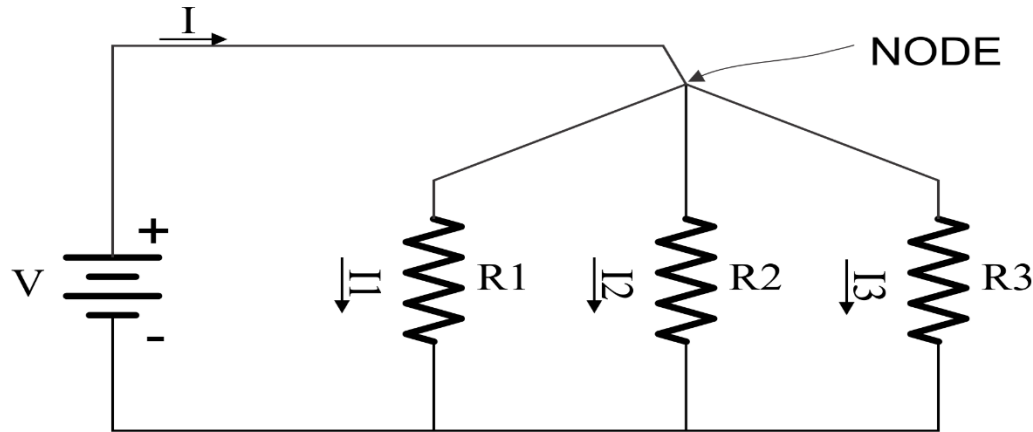
$$V1 = I * R1 = 2 * 10 = 20 \text{ volts}$$

$$V2 = I * R2 = 2 * 20 = 40 \text{ volts}$$

$$V3 = I * R3 = 2 * 30 = 60 \text{ volts}$$

# BASIC ELECTRICAL LAWS

- Kirchhoff's Current Law (KCL)
- The sum of the currents at a node in a circuit is zero.



$$I = I_1 + I_2 + I_3$$

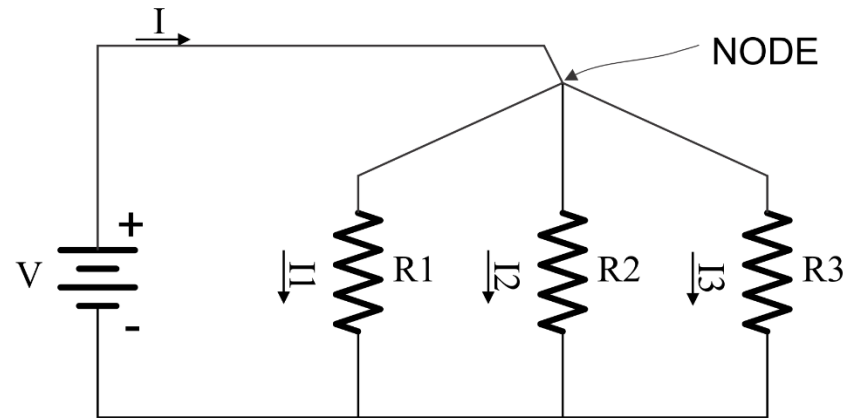
- If Loads are placed in parallel they sum up.
- So does power

$$P = V \times I = V \times I_1 + V \times I_2 + V \times I_3$$



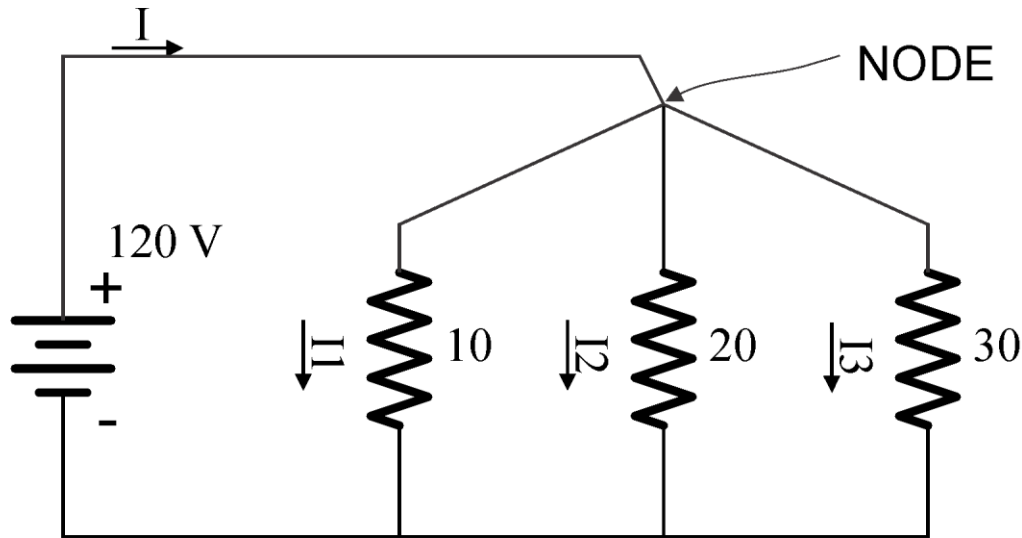
# BASIC ELECTRICAL LAWS

- Resistors in Parallel
- $I = I_1 + I_2 + I_3$
- $\frac{V}{R} = \frac{V}{R_1} + \frac{V}{R_2} + \frac{V}{R_3}$
- $\frac{1}{R} = \frac{1}{R_1} + \frac{1}{R_2} + \frac{1}{R_3}$
- $R = \frac{1}{\frac{1}{R_1} + \frac{1}{R_2} + \frac{1}{R_3}}$





# BASIC ELECTRICAL LAWS



Compute

$I_1, I_2, I_3$

$I$

$R$  (parallel resistance of  $R_1, R_2, R_3$ )

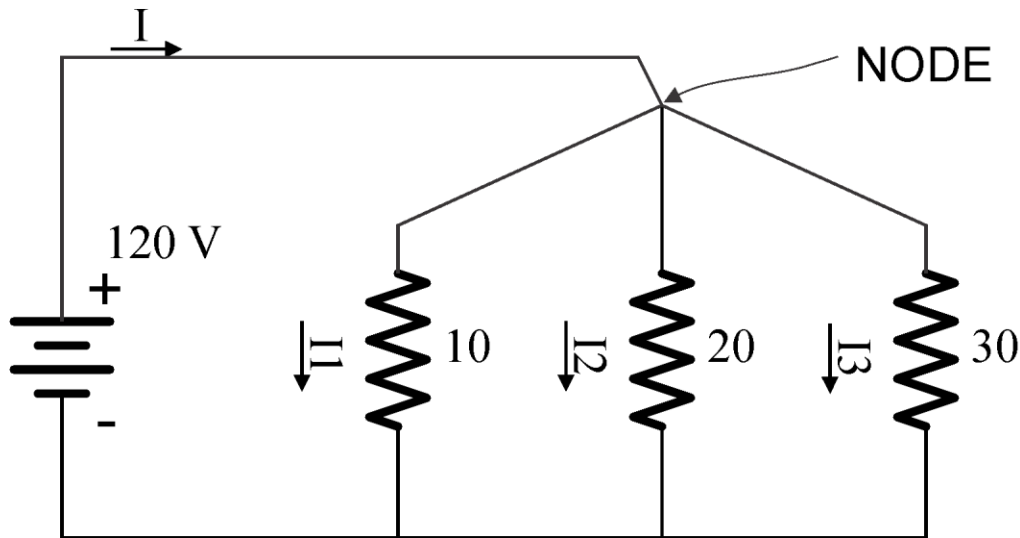
$$I_1 = 120/10 = 12A, I_2 = 120/20 = 6A, I_3 = 120/30 = 4A$$

$$I = 12 + 6 + 4 = 22A$$

$$R = V/I = 120 / 22 = 5.4545 \text{ ohms}$$



# BASIC ELECTRICAL LAWS



Compute

$I_1, I_2, I_3$

$I$

$R$  (parallel resistance of  
 $R_1, R_2, R_3$ )

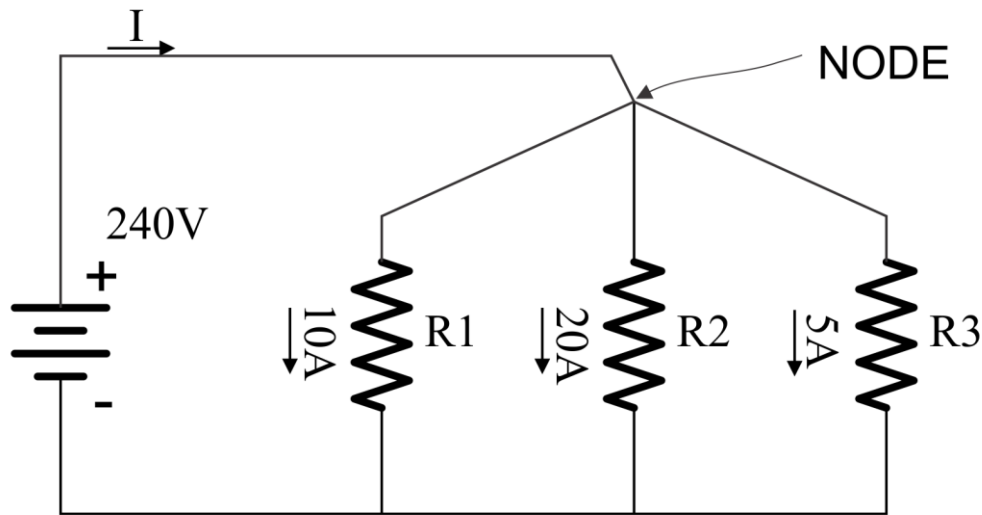
$$R = V/I = 120 / 22 = 5.4545 \text{ ohms}$$

$$\blacksquare R = \frac{1}{\frac{1}{R_1} + \frac{1}{R_2} + \frac{1}{R_3}}$$





# BASIC ELECTRICAL LAWS



Compute

R1, R2, R3

I

R (parallel resistance of  
R1, R2, R3)

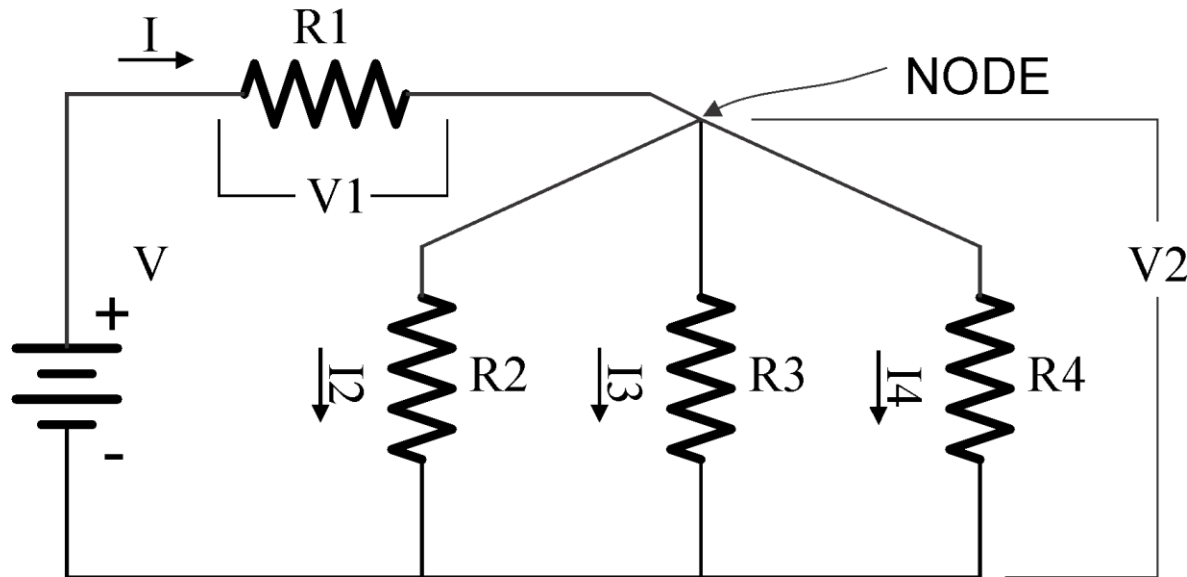
$$I = 10 + 20 + 5 = 35A$$

$$R = V/I = 240 / 35 = 6.857$$

ohms

# BASIC ELECTRICAL LAWS

- More complex circuits



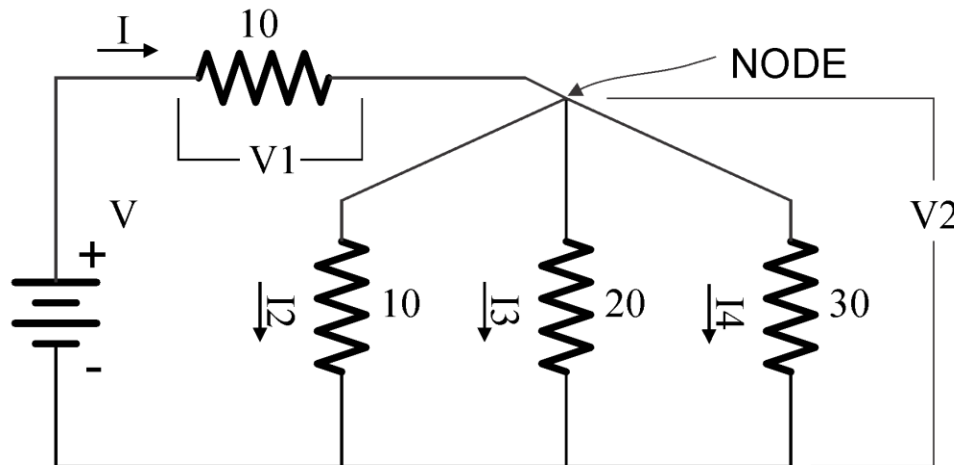
$$I = I_1 + I_2 + I_3$$

$$R = R_1 + \frac{1}{\frac{1}{R_2} + \frac{1}{R_3} + \frac{1}{R_4}}$$



# BASIC ELECTRICAL LAWS

- More complex circuits



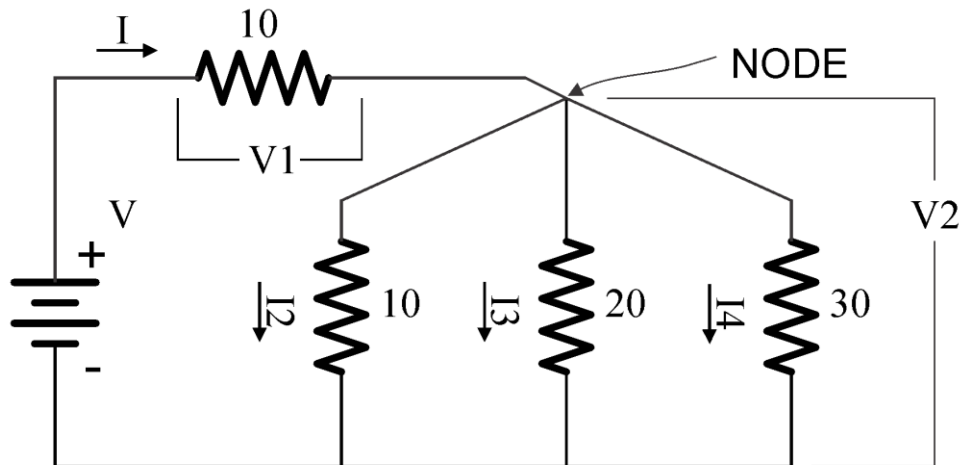
$$R = R1 + \frac{1}{\frac{1}{R2} + \frac{1}{R3} + \frac{1}{R4}}$$

$$R = 10 + \frac{1}{\frac{1}{10} + \frac{1}{20} + \frac{1}{30}} = 10 + 5.4545 =$$



# BASIC ELECTRICAL LAWS

- More complex circuits



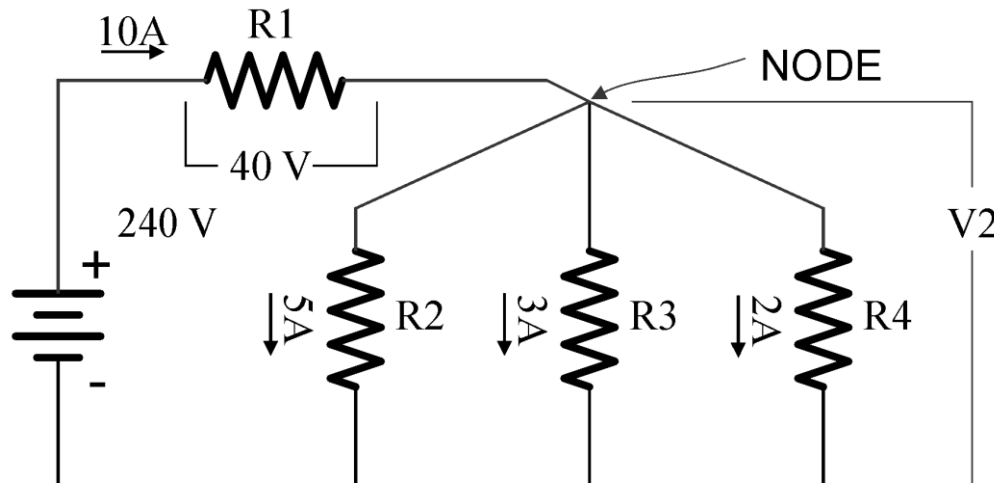
$$R = R1 + \frac{1}{\frac{1}{R2} + \frac{1}{R3} + \frac{1}{R4}}$$

$$R = 10 + \frac{1}{\frac{1}{10} + \frac{1}{20} + \frac{1}{30}} = 10 + 5.4545 = 15.4545$$



# BASIC ELECTRICAL LAWS

- More complex circuits



Compute

V2

R1, R2, R3, R4

Total Power

$$V2 = 240 - 40 = 200 \text{ volts}$$

$$R1 = 40/10 = 4, \quad R2 = 200/5 = 40,$$

$$R3 = 200/3 = 66.667, \quad R4 = 200/2 = 100$$



# BASIC AC THEORY

## POWER – THE SIMPLE VIEW

$E$  = Voltage (rms)

$I$  = Current (rms)

$PF$  = Power Factor

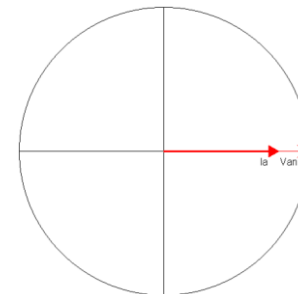
Power = Watts =  $E \times I \times PF$

Power is sometimes  
referred to as Demand

For a 120 Volt service drawing  
13 Amps at Unity (1.0) PF,  
how much power is being drawn?

Sinusoidal  
Waveforms  
Only

NO  
Harmonics



**Power =  $120 \times 13 \times 1.0 = 1560$  Watts**



# BASIC METER MATH

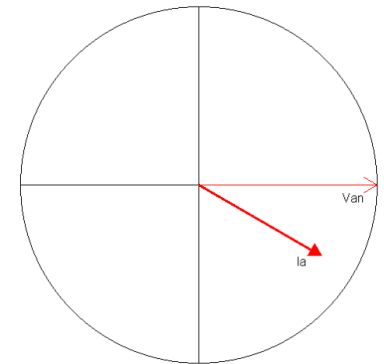
## POWER – THE SIMPLE VIEW

For a 120 Volt service drawing

13 Amps at 0.866 PF,

how much power is being drawn?

$$\text{Power} = 120 \times 13 \times 0.866 = 1351 \text{ Watts}$$

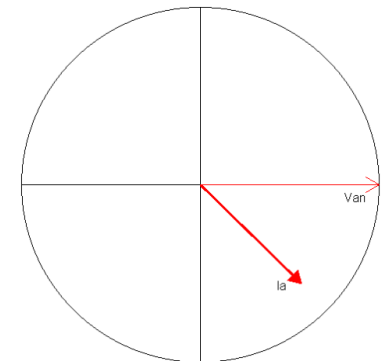


For a 480 Volt service drawing

156 Amps at 0.712 PF,

how much power is being drawn?

$$\text{Power} = 480 \times 156 \times 0.712 = 53,315 \text{ Watts}$$





# BASIC AC THEORY

## POWER – THE SIMPLE VIEW

In the previous example we had:

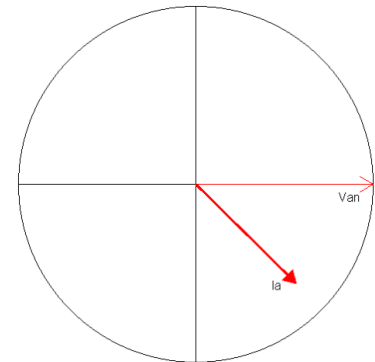
$$\text{Power} = 480 \times 156 \times 0.712 = 53,315 \text{ Watts}$$

Normally we don't talk about Watts, we speak in Kilowatts

$$1000 \text{ Watts} = 1 \text{ Kilowatt} = 1 \text{ kW}$$

$$\text{Watts} / 1000 = \text{Kilowatts}$$

For a 480 Volt service drawing  
156 Amps at Unity (0.712) PF,  
how many Kilowatts are being drawn?



$$\text{Power} = 480 \times 156 \times 0.712 / 1000 = 53.315 \text{ kW}$$





# BASIC AC THEORY

## ENERGY – WHAT WE SELL

---

If power is how fast water flows from a pipe,  
then energy is how much water we have in a bucket  
after the water has been flowing for a specified time.

$$\text{Energy} = \text{Power} \times \text{Time}$$

$$1 \text{ kW for 1 Hour} = 1 \text{ Kilowatt-Hour} = 1 \text{ kWh}$$

$$\text{Energy (Wh)} = E \times I \times \text{PF} \times T$$

where  $T$  = time in hours

$$\text{Energy (kW)} = (E \times I \times \text{PF} / 1000) \times T$$



# BASIC METER MATH

## ENERGY – WHAT WE SELL

---

For a 120 Volt service drawing 45 Amps at a  
Power Factor of 0.9 for 1 day,

how much Energy (kWh) has been used?

$$\text{Energy} = (120 \times 45 \times 0.9 / 1000) \times 24 = 116.64 \text{ kWh}$$

For a 240 Volt service drawing 60 Amps at a  
Power Factor of 1.0 for 5.5 hours,

how much Energy (kWh) has been used?

$$\text{Energy} = (240 \times 60 \times 1.0 / 1000) \times 5.5 = 79.2 \text{ kWh}$$



# BASIC METER MATH

## ENERGY – WHAT WE SELL

---

For a 120 Volt service drawing 20 Amps at a Power Factor of 0.8 from 8:00AM to 6:00PM, and 1 Amp at PF=1.0 from 6:00PM to 8:00AM how much Energy (kWh) has been used?

8:00AM to 6:00PM = 10 hours

6:00PM to 8:00AM = 14 hours

Energy =  $(120 \times 20 \times 0.8 / 1000) \times 10 = 19.2 \text{ kWh}$

Energy =  $(120 \times 1 \times 1 / 1000) \times 14 = 1.68 \text{ kWh}$

Energy =  $19.2 \text{ kWh} + 1.68 \text{ kWh} = 20.88 \text{ kWh}$



# BASIC AC THEORY

## WHAT IS VA?

---

Power was measured in Watts. Power does useful work.  
The power that does useful work is referred to as  
“Active Power.”

VA is measured in Volt-Amperes. It is the capacity  
required to deliver the Power. It is also referred to as the  
“Apparent Power.”

Power Factor = Active Power / Apparent Power

$$VA = E \times I$$

$$PF = W/VA$$



# BASIC METER MATH

## POWER – VA

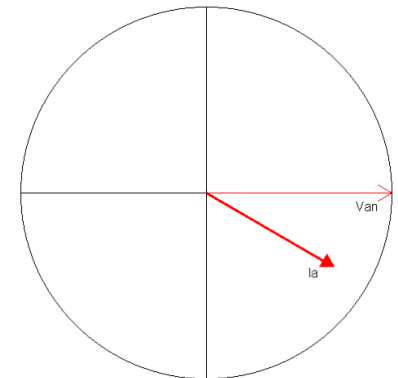
For a 120 Volt service drawing 13 Amps at 0.866 PF

How much power is being drawn?

$$\text{Power} = 120 \times 13 \times 0.866 = 1351 \text{ Watts}$$

How many VA are being drawn?

$$\text{VA} = 120 \times 13 = 1560 \text{ Volt-Amperes}$$





# BASIC METER MATH

## POWER – VA

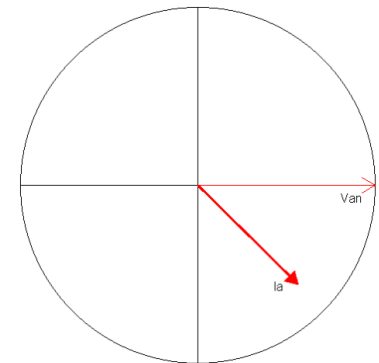
For a 480 Volt service drawing 156 Amps at 0.712 PF

How much power is being drawn?

$$\text{Power} = 480 \times 156 \times 0.712 = 53,315 \text{ Watts}$$

How many VA are being drawn?

$$\text{VA} = 480 \times 156 = 74,880 \text{ Volt-Amperes}$$





# BASIC METER MATH

## POWER – VA

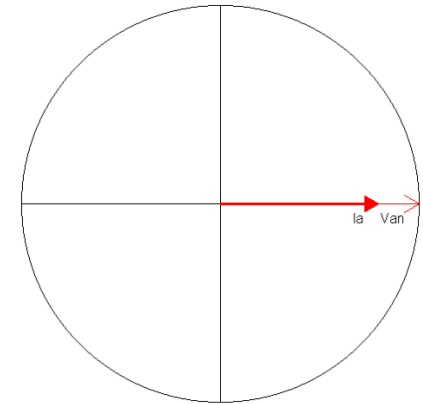
For a 120 Volt service drawing 60 Amps at 1.00 PF

How much power is being drawn?

$$\text{Power} = 120 \times 60 \times 1.00 = 7,200 \text{ Watts}$$

How many VA are being drawn?

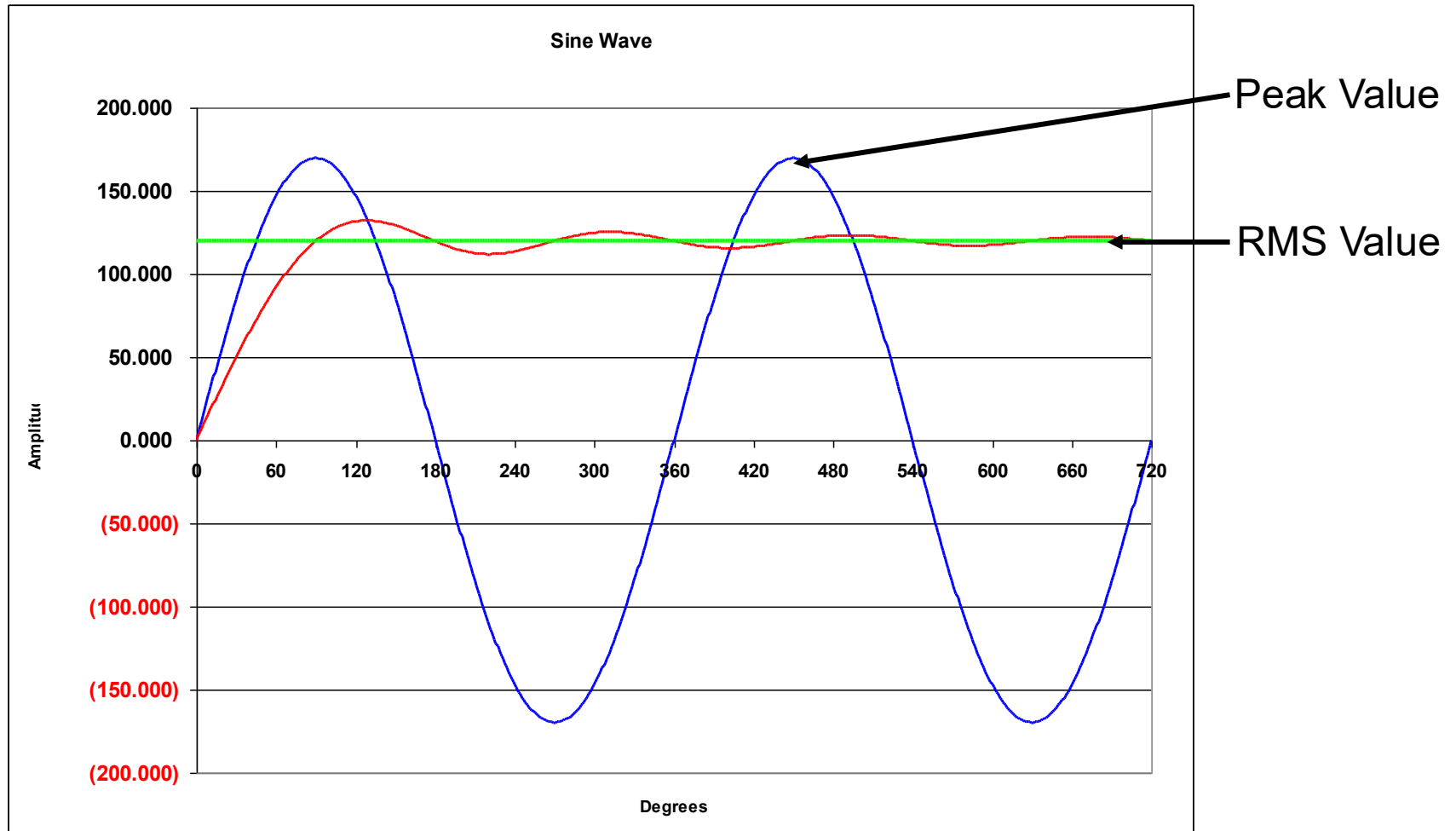
$$\text{VA} = 120 \times 60 = 7,200 \text{ Volt Amperes}$$





# BASIC AC THEORY

## SINUSOIDAL WAVEFORMS

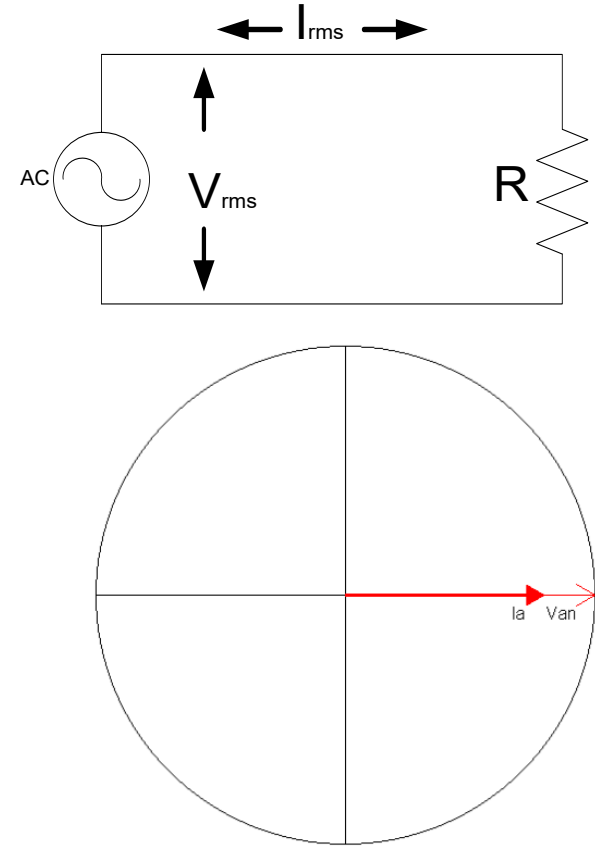
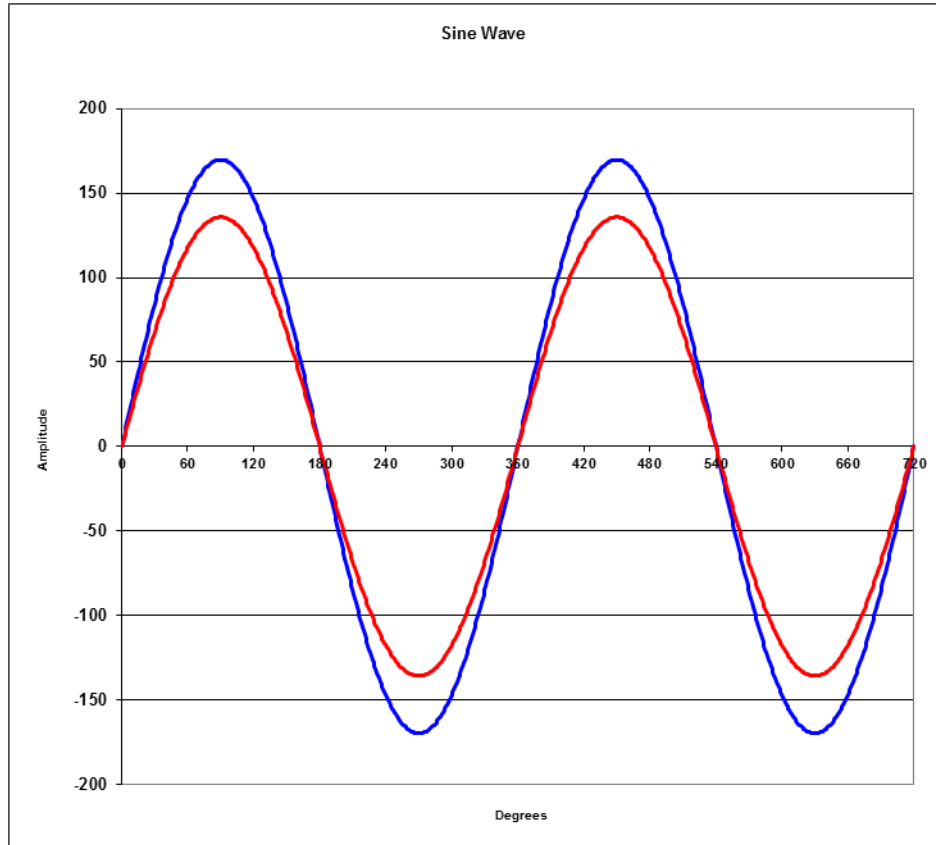






# BASIC AC THEORY

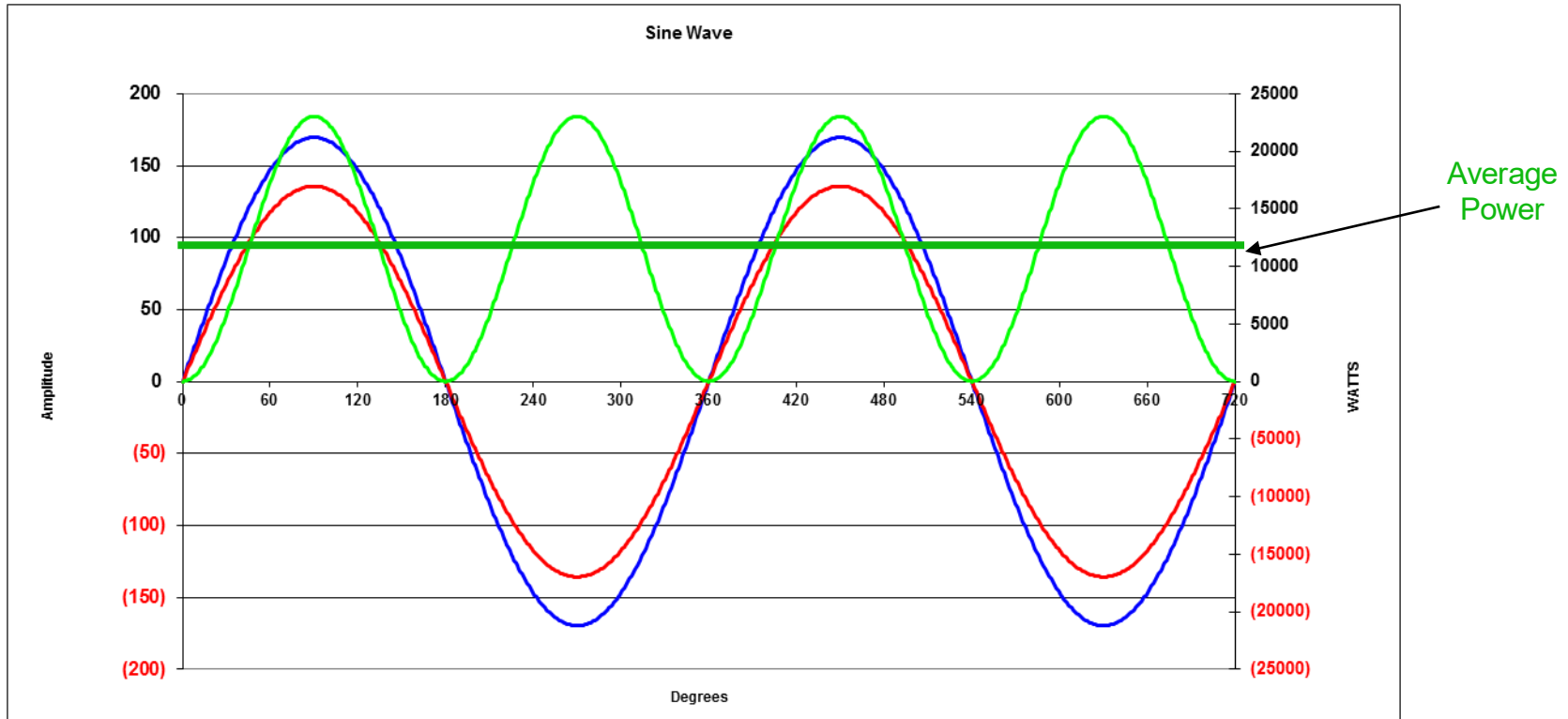
## POWER FACTOR = 1.0





# BASIC AC THEORY

## INSTANTANEOUS POWER



$$V = 120\sqrt{2}\sin(2\pi ft)$$

$$I = 96\sqrt{2}\sin(2\pi ft)$$

$$P = 120 \bullet 96 \bullet \cos(0)$$

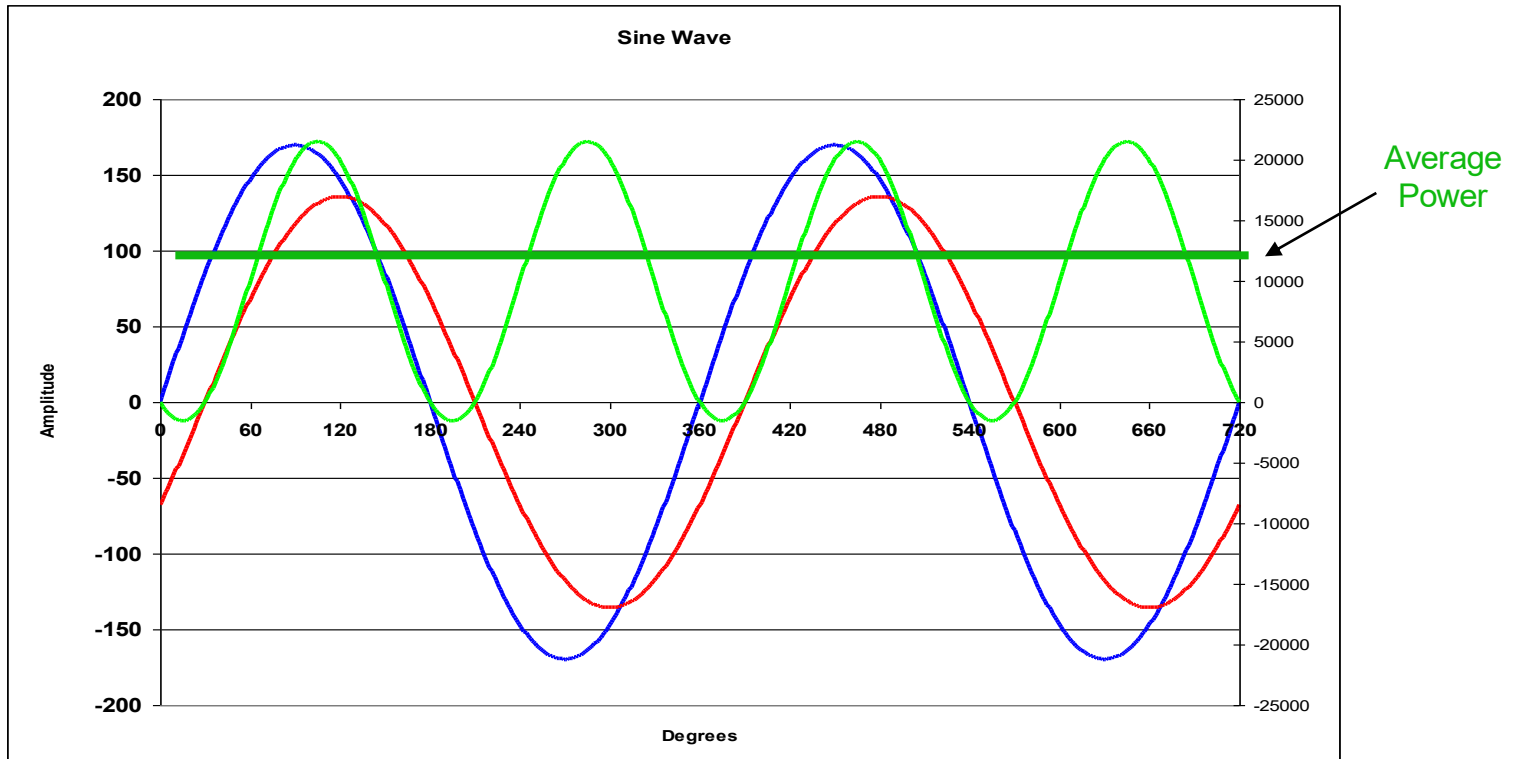
$$P = 11520 \text{ Watts}$$

Power is a "rate of flow" like water running through a pipe.



# BASIC AC THEORY

## INSTANTANEOUS POWER



$$V = 120\sqrt{2}\sin(2\pi ft)$$

$$I = 96\sqrt{2}\sin(2\pi ft - 30)$$

$$P = 120 \bullet 96 \bullet \cos(30)$$

$$P = 9,976 \text{ Watts}$$

$$PF=0.866$$

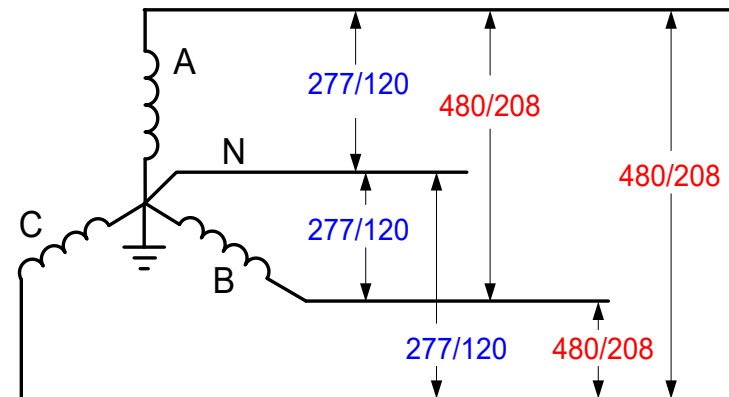
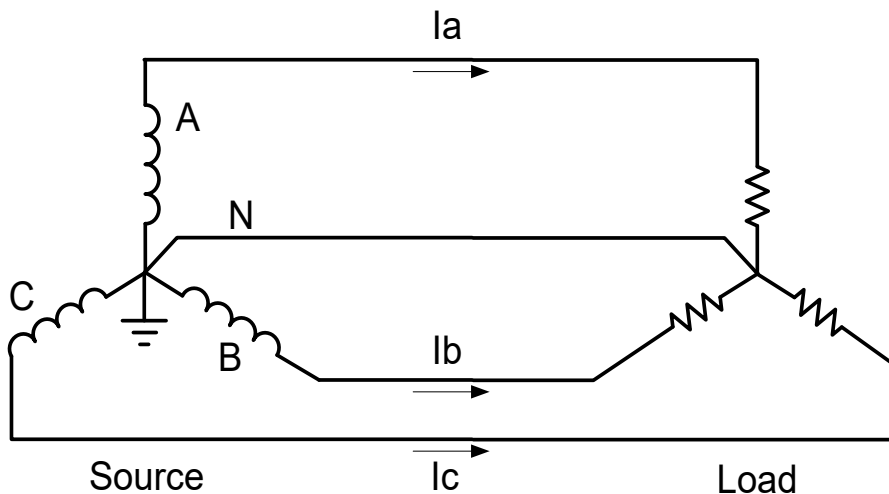


# BASIC METER MATH

## WHAT ABOUT POLYPHASE SYSTEMS?

Calculating power in a polyphase system is actually simple but sometimes we make it complex.

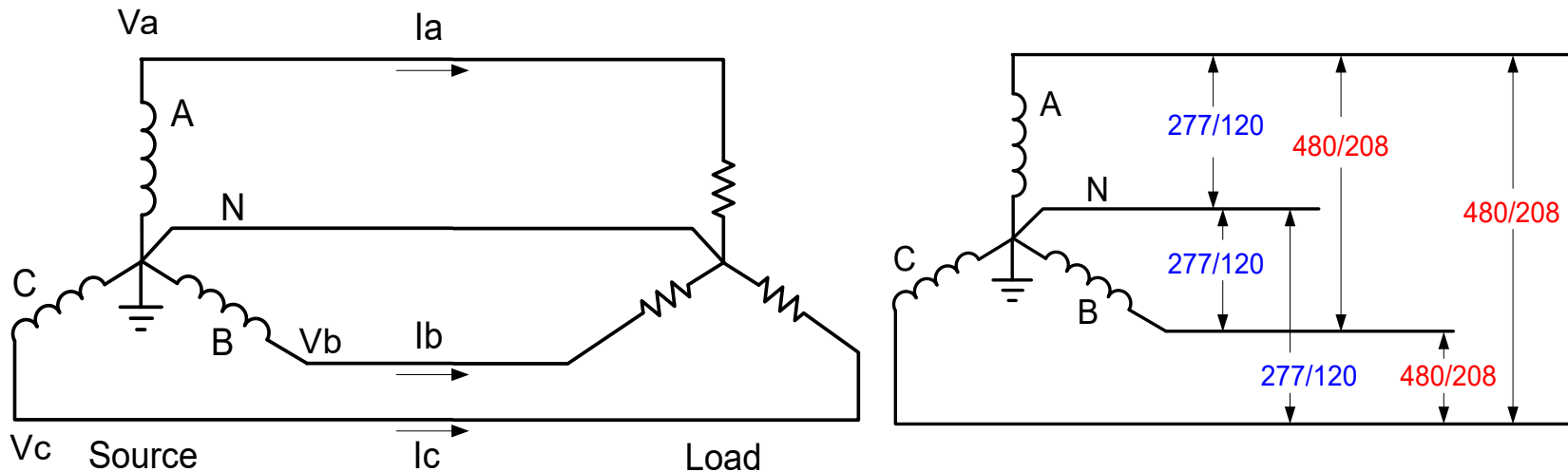
### 3 Phase, 4-Wire “Y” Service





# BASIC METER MATH

## 3 PHASE, 4-WIRE "Y" SERVICE



The total power is equal to the sum of the power in each phase.

$$P_{\text{total}} = E_a \times I_a \times \cos(\theta_a) + E_b \times I_b \times \cos(\theta_b) + E_c \times I_c \times \cos(\theta_c)$$

In a balanced system where  $V_a = V_b = V_c$  and  $I_a = I_b = I_c$  and  $\theta_a = \theta_b = \theta_c$

$$P_{\text{total}} = 3 \times E_a \times I_a \times \cos(\theta_a)$$



# BASIC METER MATH

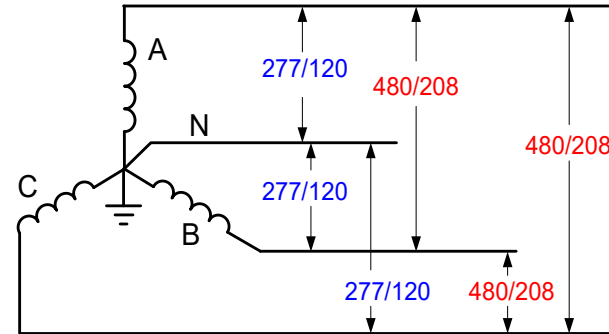
## 3 PHASE, 4-WIRE "Y" SERVICE

For a balanced system

$$E = 277 \text{ V}$$

$$I = 20 \text{ A}$$

$$\text{PF} = 1.00$$



In a balanced system where  $V_a = V_b = V_c$  and  $I_a = I_b = I_c$  and  $\theta_a = \theta_b = \theta_c$

$$P_{\text{total}} = 3 \times E_a \times I_a \times \cos(\theta_a) = 3 \times E_a \times I_a \times \text{PF}$$

$$P_{\text{total}} = 3 \times 277 \times 20 \times 1.0$$

$$P_{\text{total}} = 3 \times 277 \times 20 \times 1.0 = 16,620 \text{ W}$$



# BASIC METER MATH

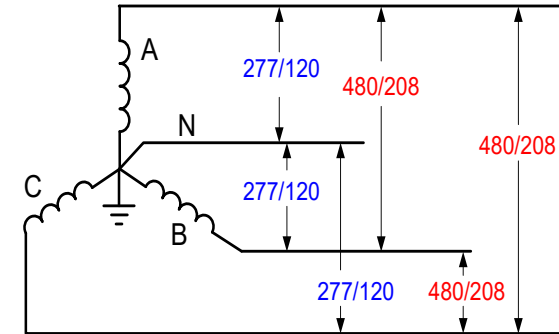
## 3 PHASE, 4-WIRE "Y" SERVICE

For a unbalanced system

$$E_a = 284 \text{ V}, E_b = 274 \text{ V}, E_c = 276 \text{ V}$$

$$I_a = 20 \text{ A}, I_b = 32 \text{ A}, I_c = 30 \text{ A}$$

$$\text{PF}_a = 0.900, \text{PF}_b = 0.784, \text{PF}_c = 0.866$$



The total power is equal to the sum of the power in each phase.

$$P_{\text{total}} = P_a + P_b + P_c$$

$$P_{\text{total}} = E_a \times I_a \times \text{Cos}(\theta_a) + E_b \times I_b \times \text{Cos}(\theta_b) + E_c \times I_c \times \text{Cos}(\theta_c)$$

$$\begin{aligned} P_a &= 284 \times 20 \times .900 \\ &= 5,112 \end{aligned}$$

$$\begin{aligned} P_b &= 274 \times 32 \times .784 \\ &= 6,874 \end{aligned}$$

$$\begin{aligned} P_c &= 276 \times 30 \times .866 \\ &= 7,170 \end{aligned}$$

$$P_{\text{total}} = 5,112 + 6,874 + 7,170 = 19,156$$



# BASIC AC THEORY

## WHAT IS VA?

If we were trying to decide how big the transformers in the last example need to be, we would need to calculate the kVA of the loads rather than the kW.

### REMEMBER

VA is measured in Volt-Amperes. It is the capacity required to deliver the Power. It is also referred to as the “Apparent Power”.

$$VA = E \times I$$

$$PF = W/VA$$





# BASIC METER MATH

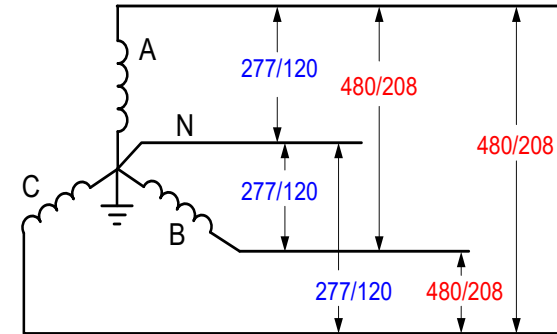
## 3 PHASE, 4-WIRE "Y" SERVICE

What is the VA for each phase?

$$E_a = 284 \text{ V}, E_b = 274 \text{ V}, E_c = 276 \text{ V}$$

$$I_a = 20 \text{ A}, I_b = 32 \text{ A}, I_c = 30 \text{ A}$$

$$PF_a = 0.900, PF_b = 0.784, PF_c = 0.866$$



The total power is equal to the sum of the power in each phase.

$$VA_{\text{total}} = VA_a + VA_b + VA_c$$

$$VA_{\text{total}} = E_a \times I_a + E_b \times I_b + E_c \times I_c$$

$$P_a = 284 \times 20 = 5,680 \quad P_b = 274 \times 32 = 8,768 \quad P_c = 276 \times 30 = 8,280$$

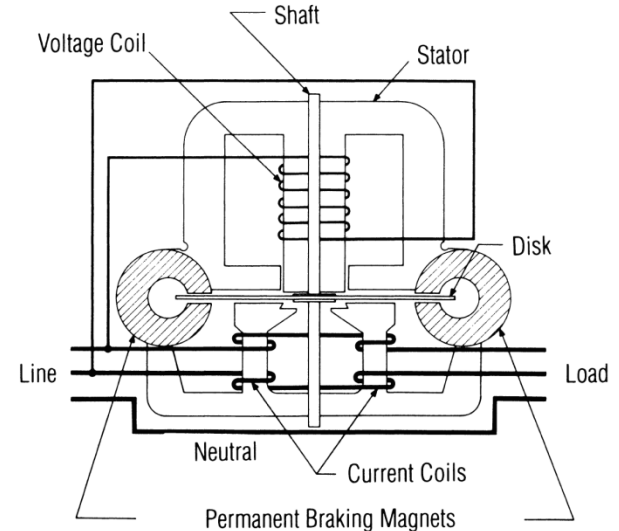
$$P_{\text{total}} = 5,680 + 8,768 + 8,280 = 25,328$$

Would you use 5kVA, 7.5kVA, 10kVA, 25kVA or 40kVA transformers?



# INDUCTION METERS

- Using concepts put forth by Tesla and Ferraris, several inventors created early induction watt-hour meters
- Two coils and a conducting (usually aluminum) disk. A braking magnet.
- Magnetic field from the first coil generates *eddy currents* in the disk
- Magnetic field from the second coil interacts with the eddy currents to cause motion
- Disk would accelerate without bound except for eddy currents caused by motion through fixed magnetic field which slows the disk
- The end result is that each revolution of the disk measures a constant amount of energy

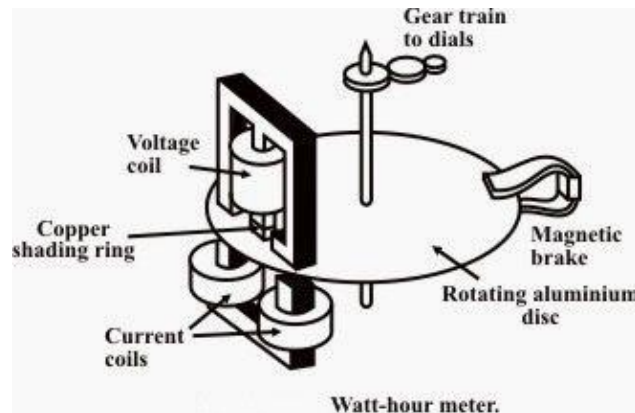




# BASIC ENERGY FORMULA

- The essential specification of a watthour meter's measurement is given by the value  
Kh [ Watthours per disk revolution ]
- The watthour meter formula is as follows:

$$E [\text{Watthours}] = K_h \left[ \frac{\text{watthours}}{\text{disk revolution}} \right] * n [\text{disk revolution s}]$$





# 1893: BLONDEL'S THEOREM

- The theory of polyphase watthour metering was first set forth on a scientific basis in 1893 by Andre E. Blondel, engineer and mathematician. His theorem applies to the measurement of real power in a polyphase system of any number of wires. The theorem is as follows:
  - If energy is supplied to any system of conductors through  $N$  wires, the total power in the system is given by the algebraic sum of the readings of  $N$  wattmeters, so arranged that each of the  $N$  wires contains one current coil, the corresponding voltage coil being connected between that wire and some common point. If this common point is on one of the  $N$  wires, the measurement may be made by the use of  $N-1$  wattmeters.





# QUESTIONS AND DISCUSSION

---

Tom Lawton

*President*

[tom.lawton@tescometering.com](mailto:tom.lawton@tescometering.com)



**TESCO – The Eastern Specialty Company**

*Bristol, PA*

**215.228.0500**

This presentation can also be found under Meter Conferences and Schools on the TESCO website: [tescometering.com](http://tescometering.com)

**ISO 9001:2015 Certified Quality Company**  
**ISO 17025:2017 Accredited Laboratory**



# VIDEO REFERENCES

---

- <https://www.youtube.com/watch?v=mc979OhitAg> (INTRO)
- [https://www.youtube.com/watch?v=w82aSjLuD\\_8](https://www.youtube.com/watch?v=w82aSjLuD_8) (VOLTS)
- <https://www.youtube.com/watch?v=8Posj4WMo0o> (AMPS)
- <https://www.youtube.com/watch?v=4oRT7PoXSS0> (3PH)
- <https://www.youtube.com/watch?v=HsLLq6Rm5tU> (OHM)