



TESCO METERING

Benefits of a New Asset Management System and TESCO Product/Services Overview

TESCO's Meter School
TESCOOL
July 20-23, 2025

Tuesday July 22, 2025
3:15 PM – 4:30 PM

John Greenewald and Kevin Tory

- Founded in 1904 by a Metering Engineer at the Philadelphia Electric Company (PECO)
- Designed the First Test Switch to promote safer field operations
- Designed the first load boxes and transformer burden test equipment
- Became the industry standard for electric meter testing throughout the early and mid to late 1900's



- Advent Design began utility projects with FP&L, PECO, PSE&G, and PPL (Meter Shop Automation).
- Acquired TESCO in 2003. Post-acquisition, expanded and modernized TESCO's product line—now the most comprehensive in its 115-year history.
- Since 2007, product development has focused on AMI-related utility needs.
- Rebranded as TESCO – The Eastern Specialty Company in May 2020.





Mesurina was founded in 1976 and is the only Canadian manufacturer of test switches for Canada. TESCO acquired Mesurina in 2007 to expand our reach in Canada.



Knopp, founded in 1928 was acquired by TESCO in 2018. Focused on (and the world wide leader) in transformer testing equipment up to 6,000 amps and 36,000 volts for electric utilities around the globe.



Power Measurements, Inc., founded in 2014, is a development and manufacturing facility focused on new power measurement equipment for the electric utility industry. They manufacture our products and provide calibration and other meter service related services for our electric utility customers in the Philippines and the Pacific Rim.



TESCO Software, mainly located in New Brunswick, Canada, develops Meter Manager software for utilities and more.



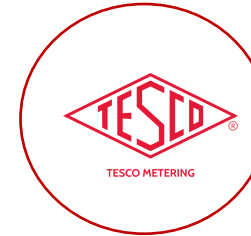
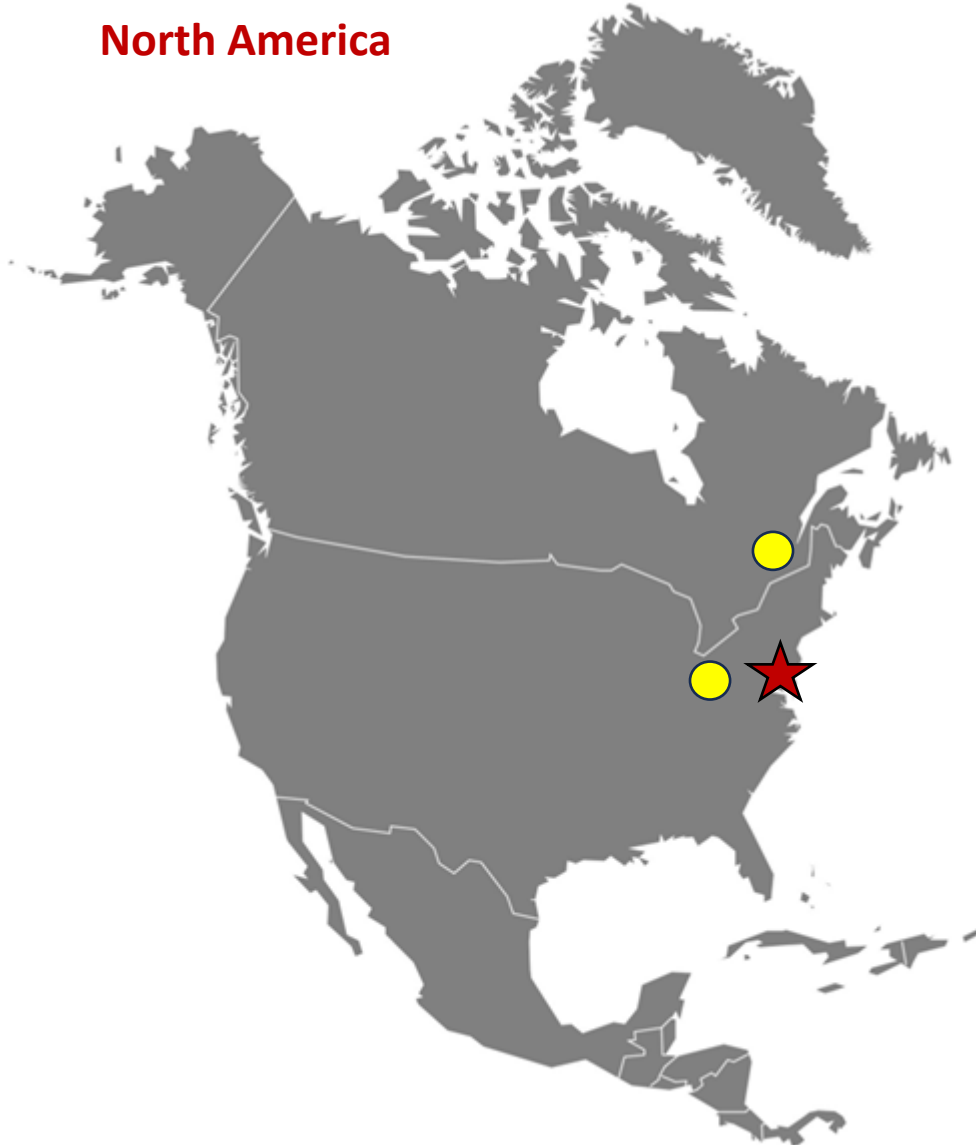
Dial Machine was acquired by TESCO in 2020 as our in-house machine shop to provide services both internally and to external customers.



TESCO and Nighthawk are a perfect fit. The leader in all things metering now offers the world a leader in affordable AMI metering. Nighthawk is the exclusive home to Adaptiv™, your Solution for AMI Cellular Mesh! Adaptiv™ provides the lowest ownership cost of any AMI provider.

North America

Philippines



TESCO Global
Headquarters
Bristol, PA
USA



Mesurina Ltd
Lachine, QC
Canada



Brackin Metal Works
Canton, OH
USA

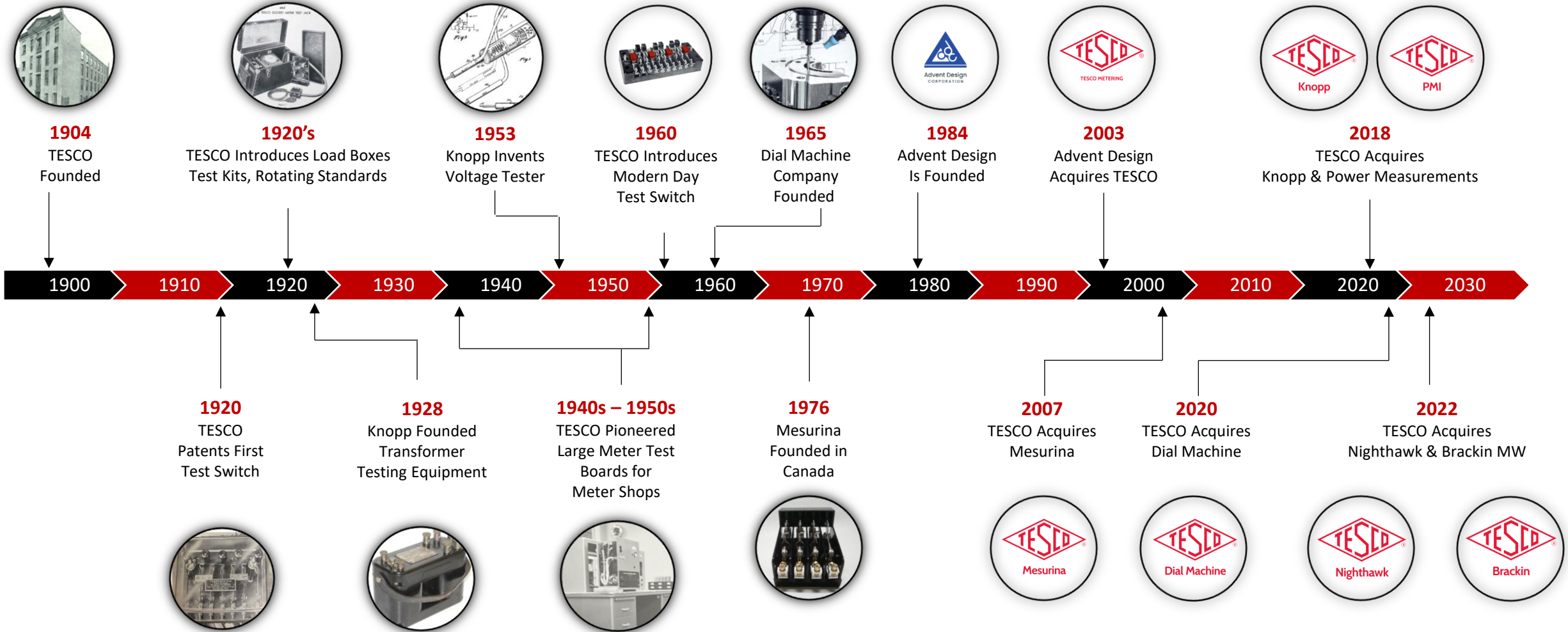


Power Measurements
Basak, Lapu-Lapu City,
Cebu 6015
Philippines



TESCO METERING

Timeline



***To become the primary outside metering resource
for all electric utility customers***



As an Adaptive Customer TESCO can help with:

- Meter Deployment/Installation
- Field Testing
- Shop Testing
- Asset Management and Field Management Tools
- AMI Analytics as a service



Product Categories: Field Testing

Field Testing Portable equipment for field applications, including Current Transformer Burden Test Sets, Field Test Kits, Meter Site Analyzers, and Signal Strength Analyzers.



10 Amp Current Transformer Burden Test Set (Catalog No. 1043)

Cat.



20 Amp Current Transformer Burden Test Set (Catalog No. 1044A)

Cat.



Artificial Resistive Load (Catalog No. 326)

Cat.



Closed-Link Field Test Kit (Catalog No. 630)

Cat.



CT Ratio/Burden Tester (Catalog No. 1047)

Cat.



Load-to-Line Jumpers (Catalog No. 200)

Cat.



Field Test Interface Kit (Catalog No. 2200)

Cat.



Field Test Kit (Catalog No. 621)

Cat.



Field Test Kit GA Series (with Resistive Load) (Catalog No. GA-50)

Cat.



FTS-2990 Field Meter Test Station

Cat.



Fused Current Jumpers (Catalog No. 9412)

Cat.



High Voltage Non-Contact Current Probe (Catalog No. P02-0802)

Cat.

Product Categories: Field Testing

Field Testing Portable equipment for field applications, including Current Transformer Burden Test Sets, Field Test Kits, Meter Site Analyzers, and Signal Strength Analyzers.



RC-50 Artificial Phantom Load with Power Factor (Catalog No. 480)

Cat.



Service Ground Test Set (Catalog No. 900)

Cat.



T3 Turbo Meter Tester

Cat.



Top of the Meter Optical Pickup (Catalog No. 1037-ITRN)



Horn Bypass Jumpers (Catalog No. 205)

Cat.



Meter Site Analyzer (Catalog No. 6330)

Cat.



Optical Pickup (Catalog No. 1037-DTS)

Cat.



Optical Probe (Catalog No. 1038)

Cat.



Probe & Pickup (Catalog No. 1035)

Cat.



Safety Disconnect Device (Catalog No. 1039)

Cat.

Product Categories: Field Testing

Field Testing Portable equipment for field applications, including Current Transformer Burden Test Sets, Field Test Kits, Meter Site Analyzers, and Signal Strength Analyzers.



Signal Strength Analyzer (Catalog 1160)

Cat.



Test Kit, 6330, Sub-Station Test Cables (Cat No. SSM-6330-KIT)

Cat.



UtiliCart® (Catalog No. 1060)

Cat.



UtiliShelf® (Catalog No. 1063)

Cat.

EVSE (Electric Vehicle Supply Equipment): EV charging test systems such as the T4350 EVSE Test System, PL4000 and PL4150 Programmable Load Boxes, and Man-in-the-Middle Cables.



ACT100 & DCT350 – AC & DC Test Systems (Cat. 5000)

Cat.



Man-in-the-Middle (MitM) Cables

Cat.



PL4000 – Programmable AC Load Box

Cat.



PL4150 – 150kW Programmable Load Box

Cat.



T4350 EVSE Test System

Cat.

Meter Shop Tools and equipment for meter shop operations, including Meter Test Boards, Optical Pick-up Sensors, and Calibration Adapters.



A-Base Test Board Adapter (Catalog No.1182-3)

Cat.



Desktop Meter Qualification Board (Catalog No. 2199)

Cat.



Hot Socket Simulator (Cat. 3100L)

Cat.



Desktop Meter Station (Catalog No. 2100)

Cat.



Desktop Test Interface Station (Catalog No. 2210)

Cat.



DTS-2990 – Desktop Meter Test Station

Cat.



IEC Meter Adapter (Catalog No. 1186)

Cat.



K-Base Test Board Adapter (Catalog No. 1180)

Cat.



KYZ Indicator and Tester

Cat.



Meter Engineering Board (MEB)

Cat.



Meter Test Board (Cat. MTB1)

Cat.



Meter Test Board (MTB-3200)

Cat.

Reference Standards & Transformer Test Systems (Knopp Series) Precision measurement products including Automatic Transformer Comparators, Voltage Testers, Burden Sets, and Calibration Standards—trusted tools for high-accuracy testing and calibration.



**Current Transformer Testing System
(Type KCTS-8000)**

Cat.



**KCTS-8000X Extended Range Knopp
Current Transformer Testing System**

Cat.



**KCTS-8000XA Automated CT Testing
System**

Cat.



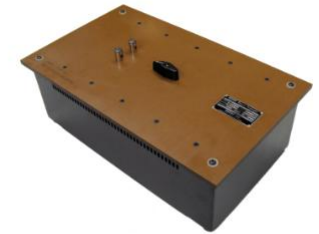
**Voltage Transformer Testing System
(KVTS)**

Cat.



**Knopp Automated Voltage
Transformer Testing System
(KVTS-A)**

Cat.



IEC Standard Burden Sets (Current)

Cat.



**ANSI Standard Burden Sets (Voltage
and Current)**



**Automatic Current Transformer
Comparator (KATC-C2)**

Cat.



**Automatic Voltage Transformer
Comparator (KATC-V2)**

Cat.



**Precision Multirange Current
Transformer (Catalog No. P-
5000)**

Cat.



**Uniload Voltage Transformer (Catalog
No. 2J4-4)**

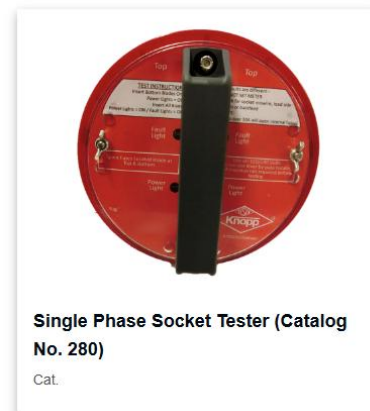
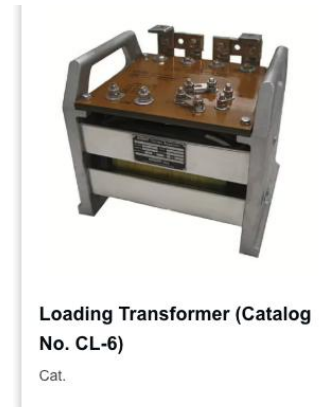
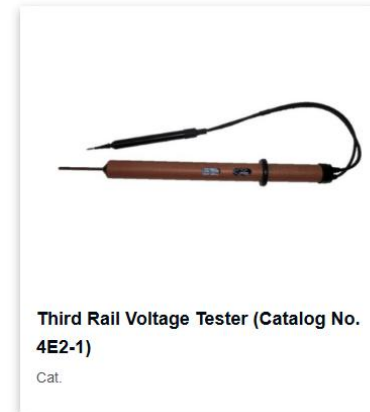
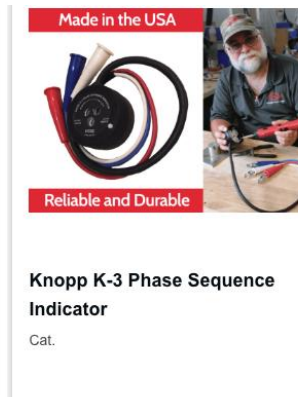
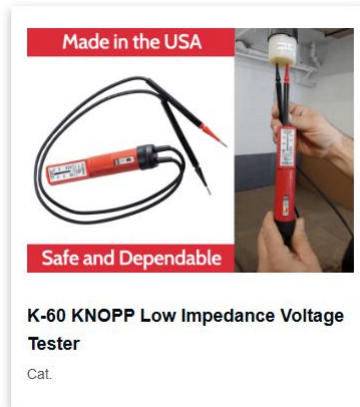
Cat.



**Uniload Voltage Transformer Test Set
(Catalog No. 2J6)**

Cat.

Reference Standards & Transformer Test Systems (Knopp Series) Precision measurement products including Automatic Transformer Comparators, Voltage Testers, Burden Sets, and Calibration Standards—trusted tools for high-accuracy testing and calibration.



Made to Order Equipment:



Product Categories: Zero Infrastructure AMI

Zero Infrastructure AMI Advanced communication solutions such as Adaptiv™, DirectConnect, and Fiber Hubs—providing AMI capabilities without infrastructure buildout.



Adaptiv™

Cat.



DirectConnect

Cat.



Nighthawk Fiber Hub

Cat.

Product Categories: Safety & Consumables

Safety & Consumables Essential safety gear and consumables, including Fused Jumpers, Meter Seals, Safety Disconnect Devices, and Test Plugs.



"H" Jumper (Catalog No. 201)

Cat.



"T" Seals (Catalog No. 224)

Cat.



A-Base Jumpers (Catalog No. 202 and 203)

Cat.



Acrylic Padlock Meter Seals (Catalog No. 221)

Cat.



Cable Seals (Catalog No. 223)

Cat.



Cable Sets (Catalog No. J-35-50)

Cat.



Carrying Case

Cat.



Click Switch (Catalog No. 995A)

Cat.



Clip-On PocketPal Carrying Case (Catalog No. 1040)

Cat.



Connector Link Assembly (Catalog No. 900-0114)



Demand Seals (Catalog No. 220)

Cat.



Flexible AC Current Probe (Catalog No. 361)

Cat.

Product Categories: Safety & Consumables

Safety & Consumables Essential safety gear and consumables, including Fused Jumpers, Meter Seals, Safety Disconnect Devices, and Test Plugs.



Fused Current Jumpers (Catalog No. 9412)
Cat.



Fused Jumper Set (Catalog No. 204)
Cat.



Horn Bypass Jumpers (Catalog No. 205)
Cat.



Hot Socket Gap Indicator (Catalog No. 300-2)
Cat.



Hot Socket Gap Indicator Calibration Fixture (Catalog No. 302)
Cat.



Hot Socket Repair Kit (Catalog No. 304 - 305)
Cat.



Hot Socket Simulator (Cat. 3100L)
Cat.



IEC Meter Adapter (Catalog No. 1186)
Cat.



Meter Disconnect Sleeves (Catalog No. 250)
Cat.



Meter Service Disconnect Adapter (tilted at a 45° angle)
Cat.



Meter Service Disconnect Adapters (Catalog No. 251)
Cat.



Meter Service Disconnect Adapters (Non-energized)
Cat.

Product Categories: Safety & Consumables

Safety & Consumables Essential safety gear and consumables, including Fused Jumpers, Meter Seals, Safety Disconnect Devices, and Test Plugs.



Meter Socket Blank-Out Covers
(Catalog No. 275 and 276)

Cat.



Meter Socket Jumper Covers (Catalog No. 277)

Cat.



Optical Port Adapters (Catalog No. 1041)

Cat.



Phase Sequence Indicator (Catalog No. 500)

Cat.



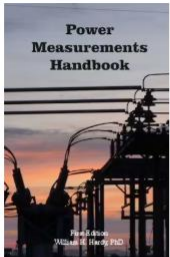
Polypropylene Padlock Meter Seals
(Catalog No. 222)

Cat.



Potential Jumpers (Catalog No. 202)

Cat.



Power Measurements Handbook



RF Meter (Catalog No. 1120)

Cat.



Safety Disconnect and Wireless Probe (Catalog No. 1039-WP)

Cat.



Safety Disconnect Device (Catalog No. 1039)

Cat.



Safety Headlamp (Catalog No. 450)

Cat.



Service Disconnect Shield (Catalog No. 253)

Cat.

Product Categories: Safety & Consumables

Safety & Consumables Essential safety gear and consumables, including Fused Jumpers, Meter Seals, Safety Disconnect Devices, and Test Plugs.



SmartPole Meter Boxes (Catalog No. 701 & 702)

Cat.



Socket Safety Clip (Catalog No. 301)

Cat.



Streetlight Meter Adapter (Catalog No. 1184)

Cat.



Temporary Service Cover

Cat.



TESCO AC Current Probe (Catalog No. 411)

Cat.



Test Plug (Catalog No. 1077)

Cat.



Test Switch Adapters for the 6330

Cat.



Test Switch Isolator (Catalog No. 1076)

Cat.

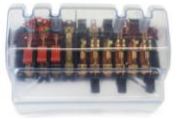


Transformer-Rated SmartPole Meter Disconnect Box (Catalog No. 703)

Cat.

Product Categories: Test Switches

Test Switches & Enclosures A range of test switches and protective enclosures, including 10-Pole and 7-Pole Test Switch Protectors, and Transformer Rated Pre-Wired Meter Enclosures.



10-Pole Test Switch Protectors
(Catalog No. 6441 & 6442)

Cat.



7-Pole Test Switch Protectors
(Catalog No. 6442 & 6442-C)

Cat.



Meter Test Switches



TESCO Back Connected Test Switches



Transformer Rated Pre-Wired Meter Enclosures



Transockets



Services

AMI & Meter Engineering Support

TESCO assists utilities in specifying, testing, and deploying advanced metering infrastructure (AMI) systems. Our engineering team supports meter evaluation, firmware testing, lab configuration, and system integration to ensure reliable performance and interoperability across your metering ecosystem.



Meter Shop Layout

TESCO provides meter shop layout services to electric, gas and water meter shops. We have significant experience in the application ...
[Learn more](#)



Project Management

TESCO provides complete project management services for implementing operational improvements including scheduling ...
[Learn more](#)



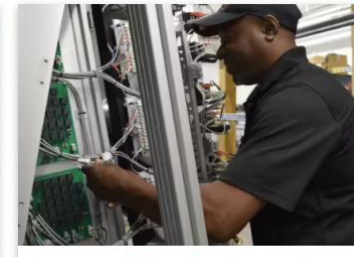
Quality Systems

Quality Systems are developed to monitor and continually improve the performance of key processes. Eliminating process ...
[Learn more](#)



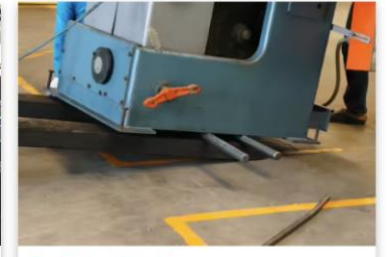
AMI Support

In addition to Meter Services, TESCO also provides AMI Support. These services enhance our capability of fulfilling any metering ...
[Learn more](#)



Equipment Specifications and Selection

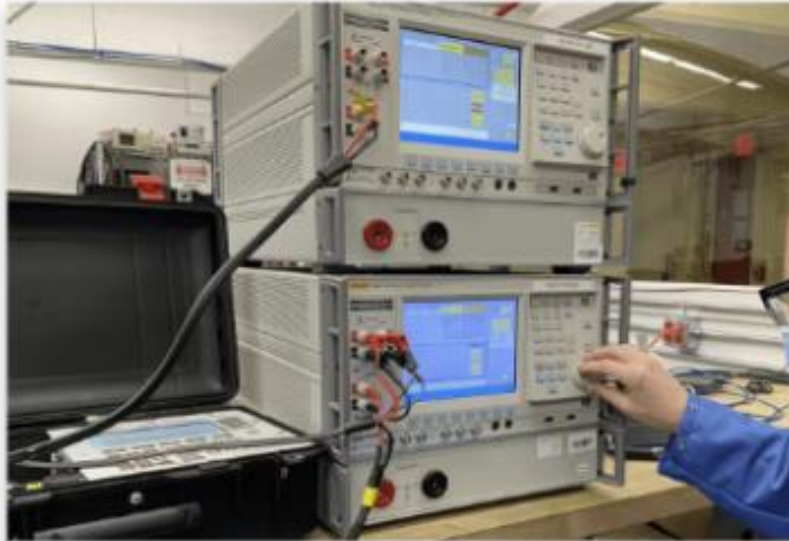
The Equipment or System Selection Process starts with an evaluation of existing operations and the development of a System Requirements ...
[Learn more](#)



Facility relocation

Facility relocation and dealing with its impact on production can be an extremely risky endeavor for any company. TESCO will develop ...
[Learn more](#)

Meter Laboratory Services



Calibration Laboratory

We at TESCO are dedicated to providing quality, accurate, accredited calibrations by delivering outstanding customer service ...

[Learn more](#)

Meter Shop Services



Equipment Rebuild

Working with a thin budget? There are times when new equipment just isn't an option for some customers. That's why we offer ...

[Learn more](#)

Software Enterprise-grade software solutions tailored for utility operations:

Asset Management



Field Service Management

The Field Client is a work management and field service module designed specifically for metering. It interfaces with virtually all field test equipment ...
[Learn more](#)



Gas Metering

TESCO's Meter Manager interfaces with major Gas Prover manufacturers thereby eliminating a manual, potentially error prone process ...
[Learn more](#)



Integration Across the Portfolio

Meter Manager seamlessly interfaces with SAP, Oracle, Maximo, Head End, CIS, Work Management and legacy systems ...
[Learn more](#)



Integration with ERPs

One of the most pervasive challenges for utilities using an ERP system, is integrating these ERPs to other applications within their organization ...
[Learn more](#)



Materials Inventory

TESCO's Meter Inventory Management is designed for comprehensive inventory control of meters and other serialized meter equipment ...
[Learn more](#)



Measurement Canada

Measurement Canada is an agency of Innovation, Science and Economic Development Canada. It is responsible for ensuring accuracy ...
[Learn more](#)



Meter Manager

With more than 100 years of industry knowledge and experience, TESCO Meter Manager is seamlessly supporting IOUs, Municipalities and Cooperatives ...
[Learn more](#)



Meter Shop Test Records & Operations Management

Meter Manager supports your testing needs beyond accuracy. A test consists of a series of user defined tasks, steps and sequences with ...
[Learn more](#)



Random Sample/In-service Sampling

The Random Sample module, sometimes referred to as the in-service testing module, is designed to manage the random and periodic testing ...
[Learn more](#)



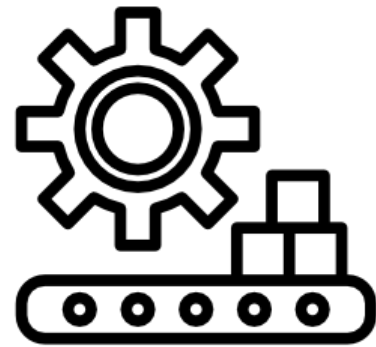
Test Equipment Integration

Meter Manager integrates with field and shop test equipment from almost all manufacturers ...
[Learn more](#)



The Self-Serve / Kiosk

The Self-Serve / Kiosk module allows users to check meters in and out either from their own device or from a stand-alone kiosk ...
[Learn more](#)



Manufacturing Capabilities

Custom U.S.-Based Manufacturing. Shorter Lead Times. Long-Term Reliability.

At TESCO, our in-house, vertically integrated manufacturing allows us to deliver precision, speed, and flexibility—without dependence on overseas suppliers.

Why TESCO?

Faster lead times, lower risk

Flexible from prototypes to scale

Trusted by utilities and OEMs

Made in the USA

Core Capabilities

- Casting & Fabrication: Epoxy, metal forming, stamping
- Precision Machining: CNC, Swiss, grinding
- Joining & Finishing: Welding, powder coat, varnish
- Integration: Coil winding, embedded software
- 3D Printing: Rapid prototyping





Metering Education



TESCO METERING

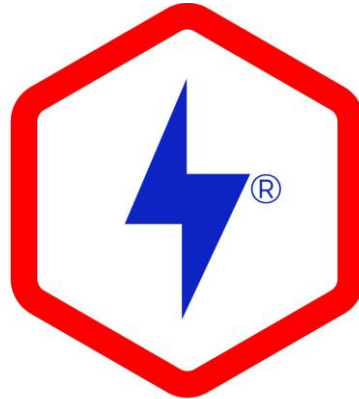
Meter Schools & Conferences



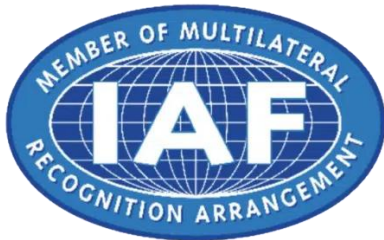
Major Participation with the Main Meter Schools & Conferences



Certifications



NEMA
**MAKE IT
AMERICAN™**





TESCO METERING



TESCO METERING

Please Take a Few
Minutes To Provide
Feedback About The
Course & Instructor

Track 5 - Benefits of New Asset
Mgmt System 72225 3:15PM
Greenewald/Tory

