



THE EASTERN SPECIALTY COMPANY

INTRO TO SELF-CONTAINED, TRANSFORMER-RATED AND METER FORMS

Tuesday, March 8, 2022

9:40 AM – 11:00 AM

Tom Lawton and Rob Reese





THE EASTERN SPECIALTY COMPANY

AGENDA

Meters 101 - Electro-Mechanical vs Solid-State

Meter Forms

Self-Contained vs Transformer Rated

Blondel's Theorem

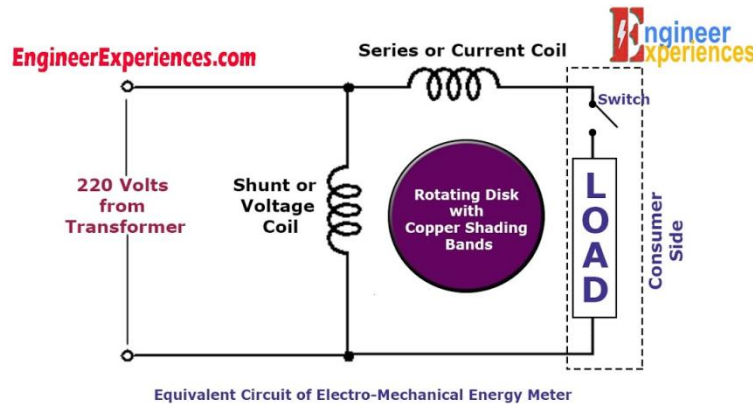
Available References (Hardy's, UGLY's Elect Ref)

Examples

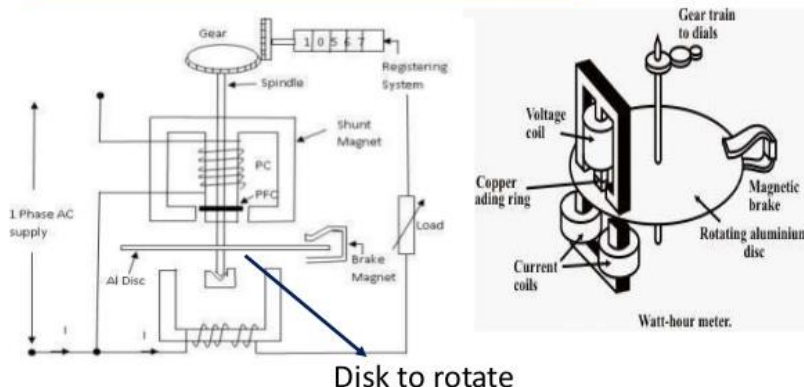
1S, 2S, 3S, 4S, 5/35S, 8/9S, 16S

METERS 101 – ELECTRO-MECHANICAL

Overview of Functionality



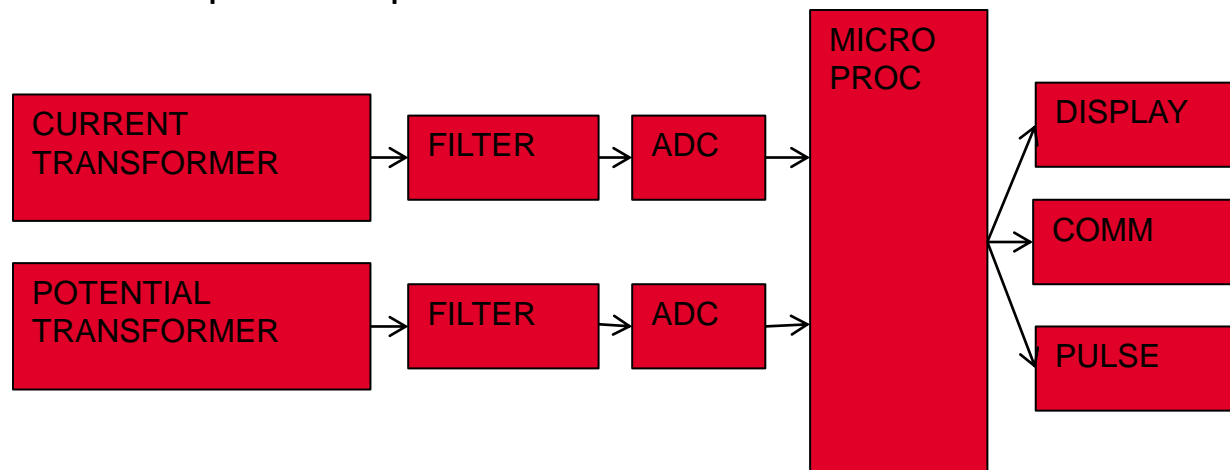
Electromechanical energy meter continue...



- The electromechanical induction meter operates through electromagnetic induction
- A non-magnetic, but electrically conductive, metal disc which is made to rotate at a speed proportional to the power passing through the meter
- The disc is acted upon by two sets of induction coils, which form, in effect, a two phase linear induction motor.
- One coil is connected in such a way that it produces a magnetic flux in proportion to the voltage
- The other coil produces a magnetic flux in proportion to the current.
- The field of the voltage coil is delayed by 90 degrees, due to the coil's inductive nature, and calibrated using a lag coil
- This produces eddy currents in the disc and the effect is such that a force is exerted on the disc in proportion to the product of the instantaneous current and instantaneous voltage
- A permanent magnet acts as an eddy current brake, exerting an opposing force proportional to the speed of rotation of the disc
- The equilibrium between these two opposing forces results in the disc rotating at a speed proportional to the power or rate of energy usage
- The disc drives a register mechanism which counts revolutions, much like the odometer in a car, in order to render a measurement of the total energy used.
- The amount of energy represented by one revolution of the disc is denoted by the symbol Kh which is given in units of watt-hours per revolution.
- A Kh of 7.2 is typical. In this example, each full rotation of the disc is equivalent to 7.2Wh of energy.

Overview of Functionality

- Potential and Current is scaled down and conditioned with transformers and filters
- ADC's (analog to digital converters) digitize the signals
- A micro-processor or DSP executes the calculations
- Resulting data is displayed, sent externally via the communication circuits, and used for the calibrated pulse output





THE EASTERN SPECIALTY COMPANY

METER FORMS

1S 14S 39S 17S

3S 12S 2S 35S

76S 46S 4S 25S

45S 66S 10S

5S 26S 11S 6S 32S

15S 9S 13S 16S

24S 56S



THE EASTERN SPECIALTY COMPANY

METER FORMS





THE EASTERN SPECIALTY COMPANY

METER FORMS

1S 14S 39S 17S

2S

3S 12S 35S

4S 25S

10S

76S 46S 66S

45S

11S 32S

5S 26S 6S

9S 16S

13S

56S

15S 24S



THE EASTERN SPECIALTY COMPANY

METER FORMS

SELF-CONTAINED

1S 14S 12S
2S
25S
17S 16S
13S
15S 32S

TRANSFORMER-RATED

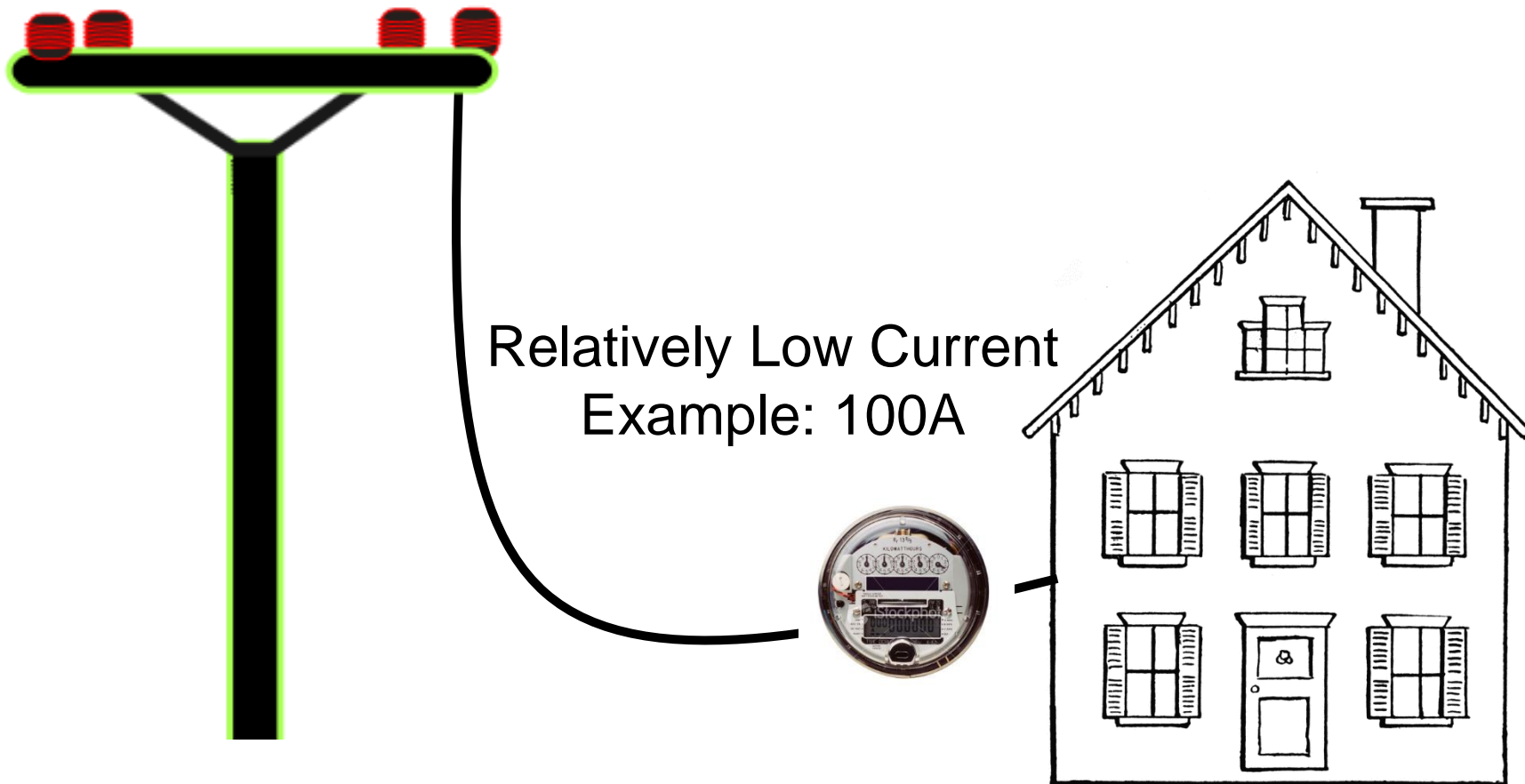
39S 3S 36S 7S
29S
76S
5S 35S
4S 46S
8S 26S
11S
66S 9S 45S
6S
56S 10S 24S



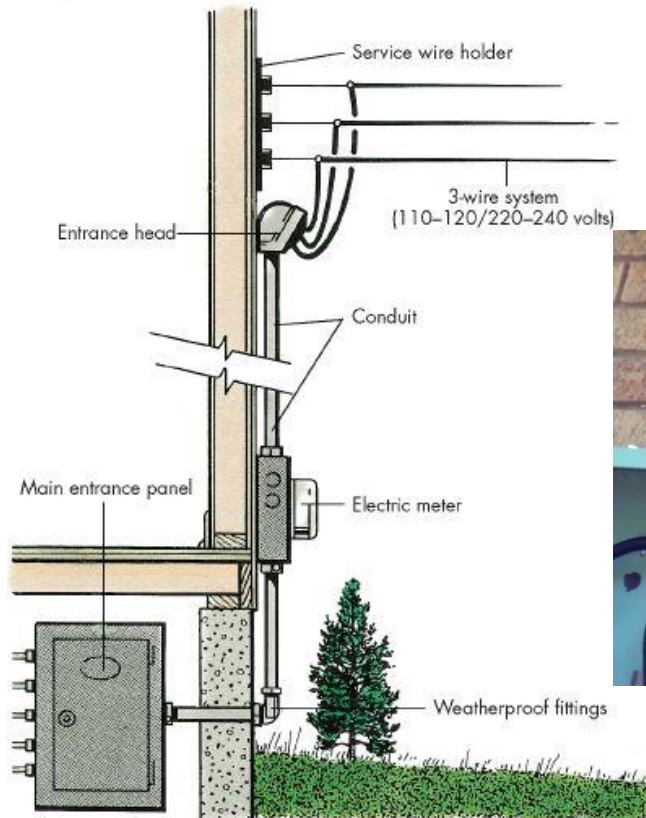
THE EASTERN SPECIALTY COMPANY

SELF-CONTAINED METERS

Primarily Residential



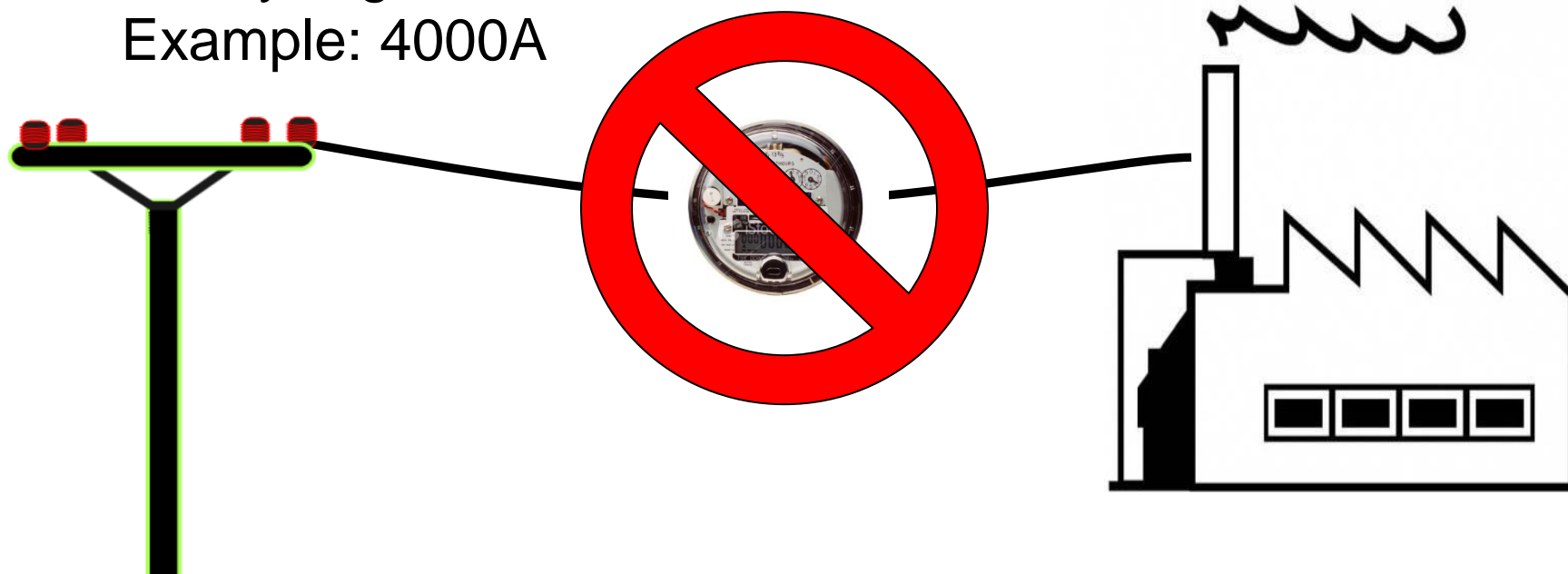
Primarily Residential



TRANSFORMER-RATED METERS

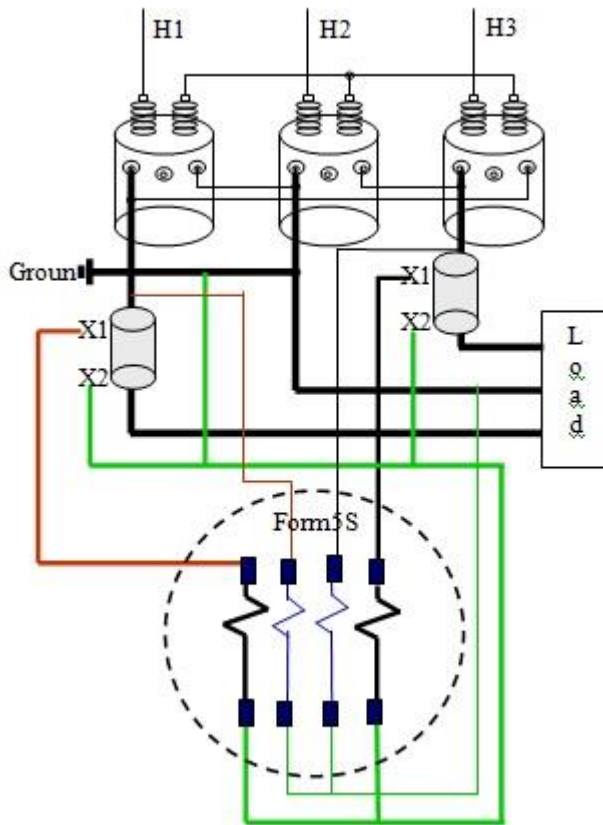
Primarily Commercial/Industrial

Relatively High Current
Example: 4000A



TRANSFORMER-RATED METERS

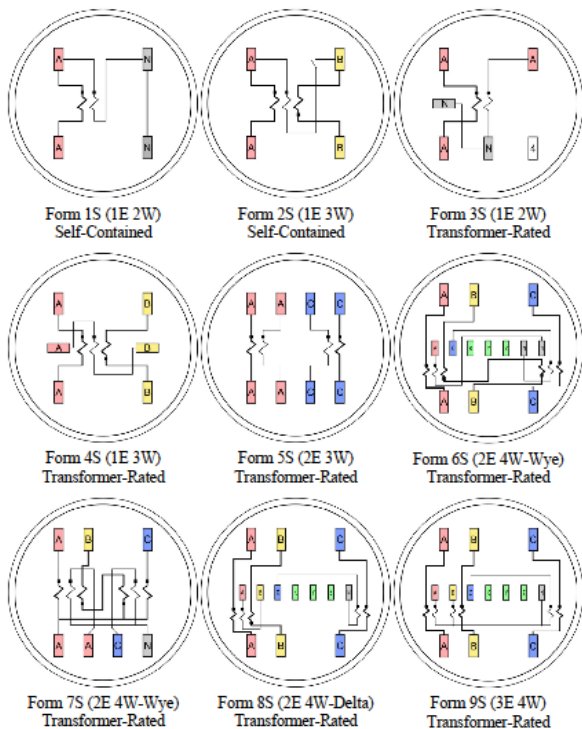
Primarily Commercial/Industrial



Chapter 2: Introduction to Metering

Meter Forms

Documentation of approved meter forms can be found in ANSI C12.10.
 "nE" number of elements. "nW" number of wires.



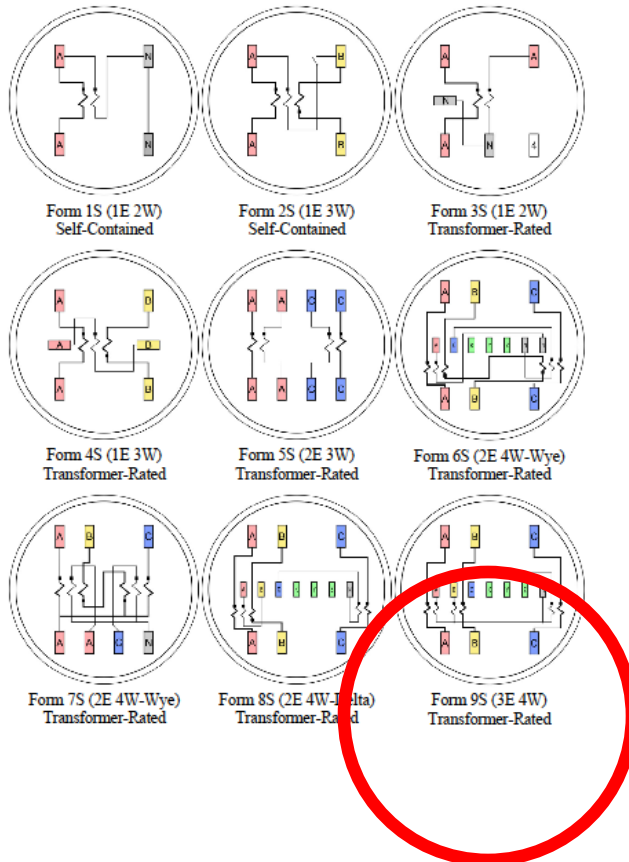
References

- Power Measurements Handbook, Dr. Bill Hardy
- UGLY's Electrical References
- Meterman's Handbook
- Manufacturer's websites

Chapter 2: Introduction to Metering

Meter Forms

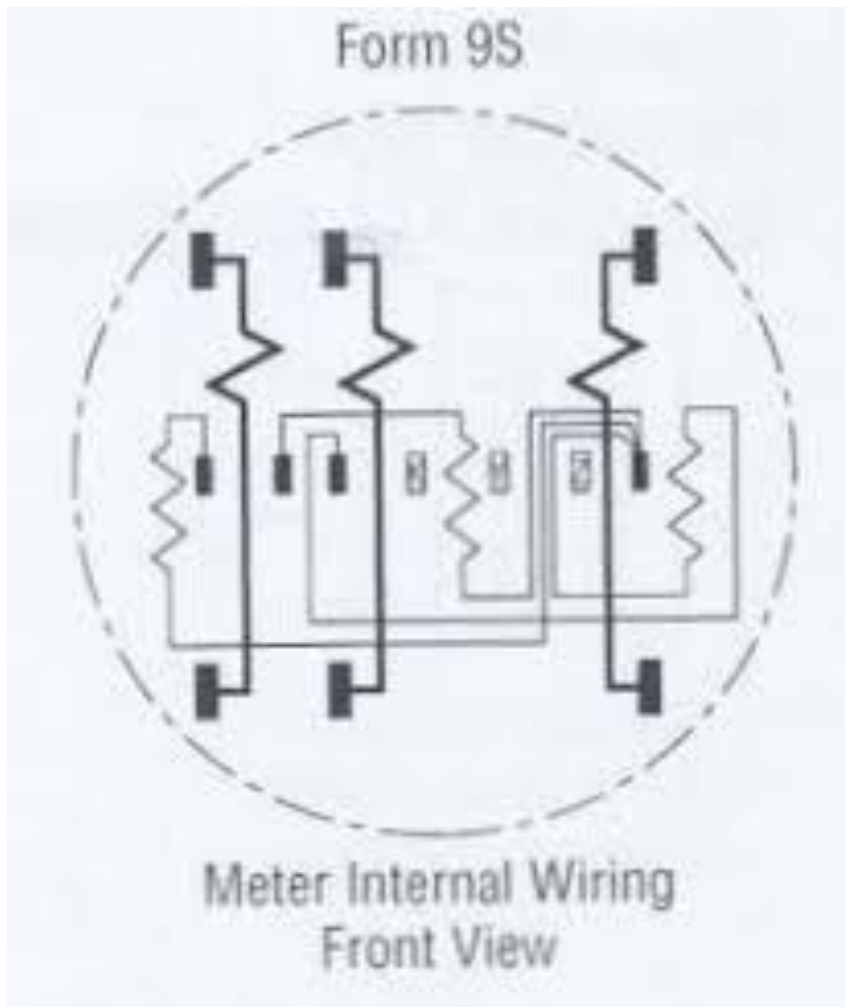
Documentation of approved meter forms can be found in ANSI C12.10.
 "nE" number of elements. "nW" number of wires.



References

- Power Measurements Handbook, Dr. Bill Hardy
- UGLY's Electrical References
- Meterman's Handbook
- Manufacturer's websites

DIAGRAM EXAMPLE



- 3 Current Coils
- 3 Potential Coils

BLONDEL'S THEOREM



- French Electrical Engineer Andre Blondel
- Attempt to simplify electrical measurements and validation of the results
- Paper submitted to the International Electric Congress in Chicago in 1893.

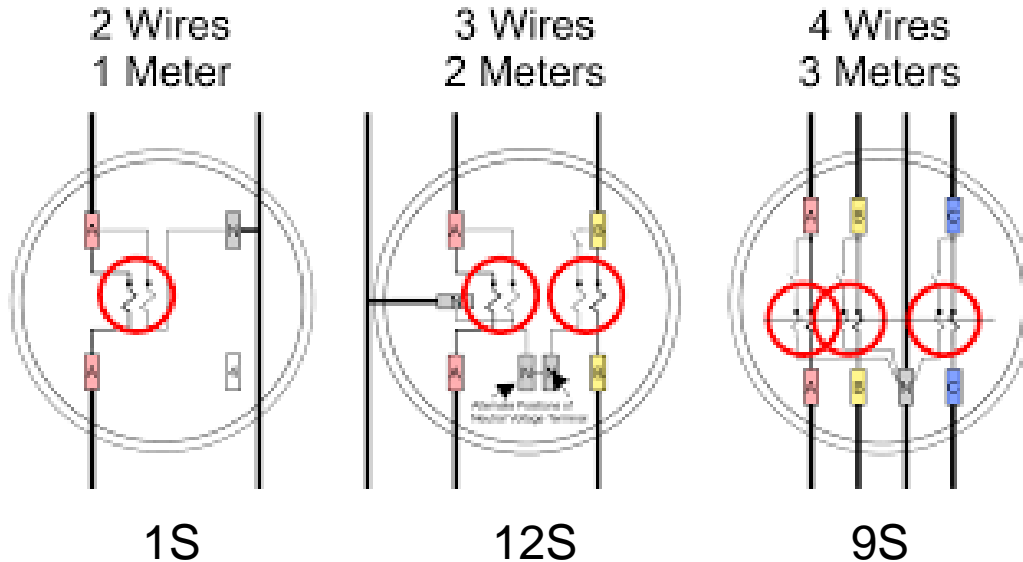
$$E = n - 1$$

The theorem states that the power provided to a system of N conductors is equal to the algebraic sum of the power measured by N watt-meters. The N watt-meters are separately connected such that each one measures the current level in one of the N conductors and the potential level between that conductor and a common point. In a further simplification, if that common point is located on one of the conductors, that conductor's meter can be removed and only $N-1$ meters are required.

BLONDEL'S THEOREM

Blondel Compliant

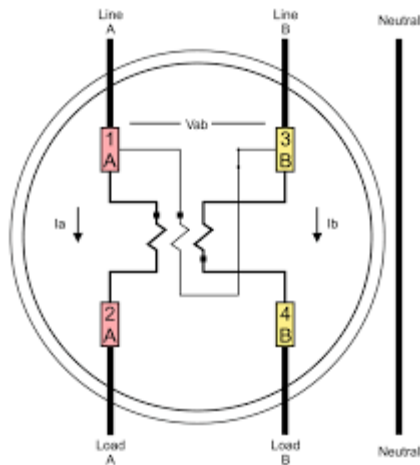
$$E = n - 1$$



The theorem states that the power provided to a system of N conductors is equal to the algebraic sum of the power measured by N watt-meters. The N watt-meters are separately connected such that each one measures the current level in one of the N conductors and the potential level between that conductor and a common point. In a further simplification, if that common point is located on one of the conductors, that conductor's meter can be removed and only N-1 meters are required.

BLONDEL'S THEOREM

Non-Blondel Compliant



2S

$$E = n - 1$$

The theorem states that the power provided to a system of N conductors is equal to the algebraic sum of the power measured by N watt-meters. The N watt-meters are separately connected such that each one measures the current level in one of the N conductors and the potential level between that conductor and a common point. In a further simplification, if that common point is located on one of the conductors, that conductor's meter can be removed and only $N-1$ meters are required.



BLONDEL'S THEOREM

Why is non-Blondel metering bad?

- Makes assumptions about the service
- Example: balanced voltages
- Assumptions might not be true
- When these assumptions are not true, then there are power measurement errors even if the meter is working perfectly.

The theorem states that the power provided to a system of N conductors is equal to the algebraic sum of the power measured by N watt-meters. The N watt-meters are separately connected such that each one measures the current level in one of the N conductors and the potential level between that conductor and a common point. In a further simplification, if that common point is located on one of the conductors, that conductor's meter can be removed and only $N-1$ meters are required.



THE EASTERN SPECIALTY COMPANY

BLONDEL'S THEOREM

Why are non-Blondel meters used?

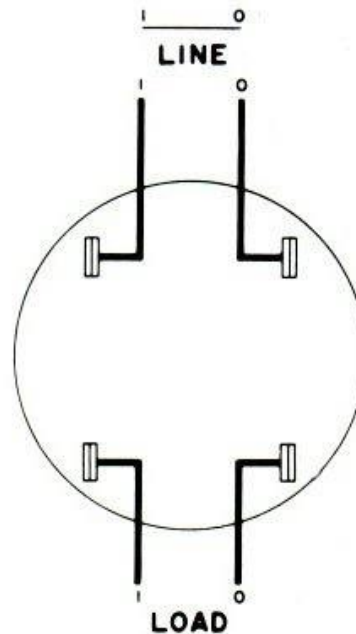
- Fewer elements (meters) = lower cost
- Especially true for electro-mechanical meters
- Fewer CT's and PT's = lower cost
- Less wiring and cheaper sockets

The theorem states that the power provided to a system of N conductors is equal to the algebraic sum of the power measured by N watt-meters. The N watt-meters are separately connected such that each one measures the current level in one of the N conductors and the potential level between that conductor and a common point. In a further simplification, if that common point is located on one of the conductors, that conductor's meter can be removed and only $N-1$ meters are required.

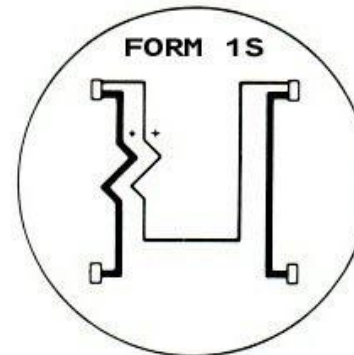


THE EASTERN SPECIALTY COMPANY

METERING EXAMPLES



All sockets are viewed from the front.
All meters are viewed from the front,
not from the base.



FORM 1S

1Ø, 2 W CIRCUIT

1 Stator, 2 W Meter, Self-Contained

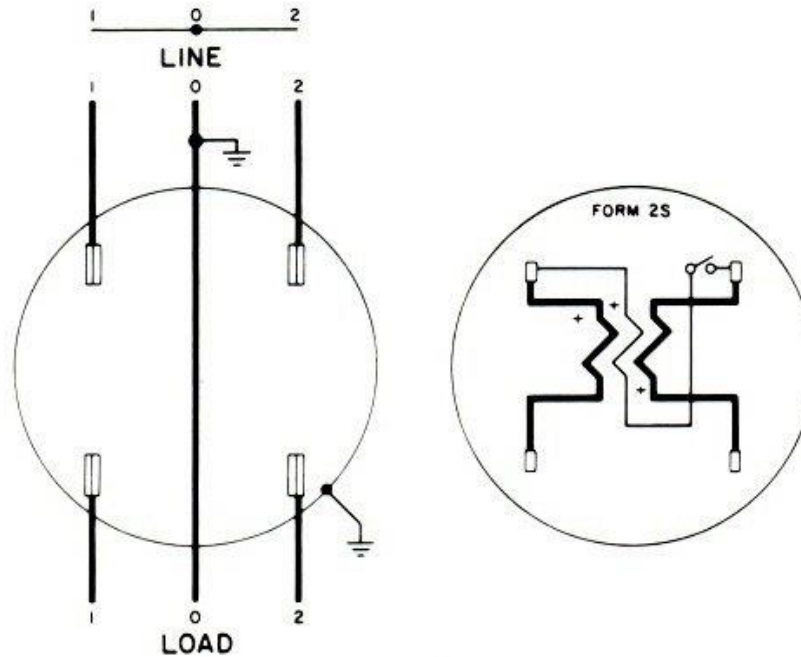


P: 212-575-0785



THE EASTERN SPECIALTY COMPANY

METERING EXAMPLES



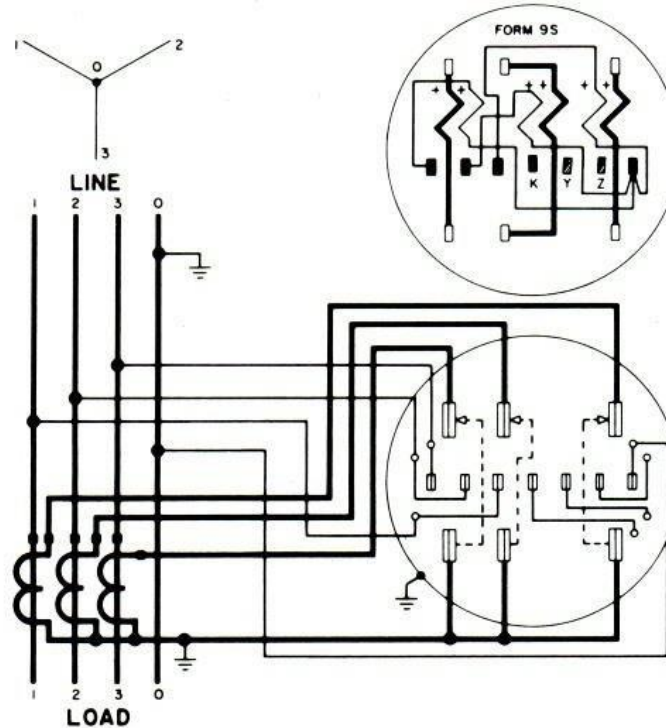
1Ø, 3 W CIRCUIT
1 Stator, 1Ø, 3 W Meter, Self-Contained





THE EASTERN SPECIALTY COMPANY

METERING EXAMPLES



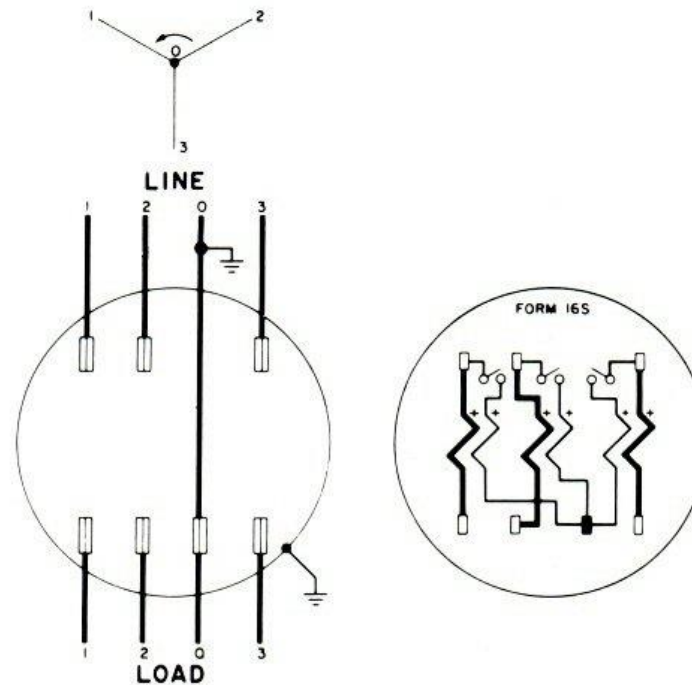
3 ϕ , 4 W, Y CIRCUIT
3 Stator, 3 ϕ , 4 W, Y Meter with 3-2 W CT's





THE EASTERN SPECIALTY COMPANY

METERING EXAMPLES



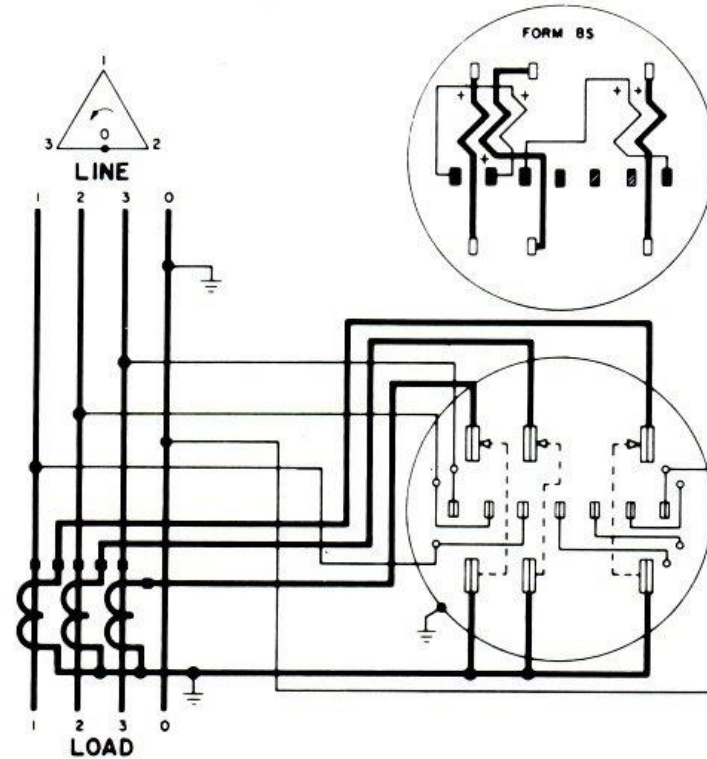
3 ϕ , 4 W, Y CIRCUIT
3 Stator, 3 ϕ , 4 W, Y Meter, Self-Contained





THE EASTERN SPECIALTY COMPANY

METERING EXAMPLES



3 ϕ , 4 W, Δ CIRCUIT
2 Stator, 3 ϕ , 4 W, Δ Meter with 3-2 W CT's

 **BCM**
Bay City Metering
P: 212-575-0785



THE EASTERN SPECIALTY COMPANY

REFERENCES

- https://en.wikipedia.org/wiki/Blondel%27s_theorem
- <http://www.powermeasurements.org/library/Presentations/NCMS%202013%20-%20Non-Blondel%20Metering.pdf>
- <https://www.baycitymetering.com/>



THE EASTERN SPECIALTY COMPANY

QUESTIONS AND DISCUSSION



Tom Lawton

President

tom.lawton@tescometering.com

Rob Reese

Midwest Regional Sales Manager

rob.reese@tescometering.com

TESCO – The Eastern Specialty Company

Bristol, PA

215-228-0500

This presentation can also be found under Meter Conferences and Schools on the TESCO website: tescometering.com

ISO 9001:2015 Certified Quality Company
ISO 17025:2017 Accredited Laboratory

tescometering.com