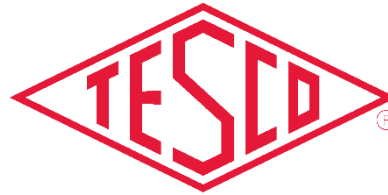


METERING LEADER SINCE 1904



THE EASTERN SPECIALTY COMPANY

# METER MANAGER

Metering-Centric Quality Management  
(Asset, Inventory & Field Service  
Management Software)

Prepared by Paul Fratellone, TESCO Software  
The Eastern Specialty Company



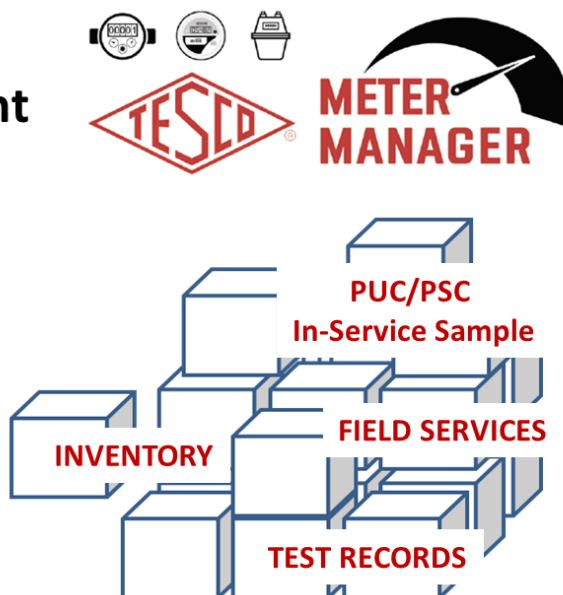
*For Mid-South Meter School  
Wednesday, May 3, 2023 at 3:00 PM*

# UTILITY'S COMMON CHALLENGES

## Meter Manager: Solves Problems and Adds Value

### Business Concerns

Test Records Management  
Revenue Protection  
Inventory Control  
Regulatory Compliance



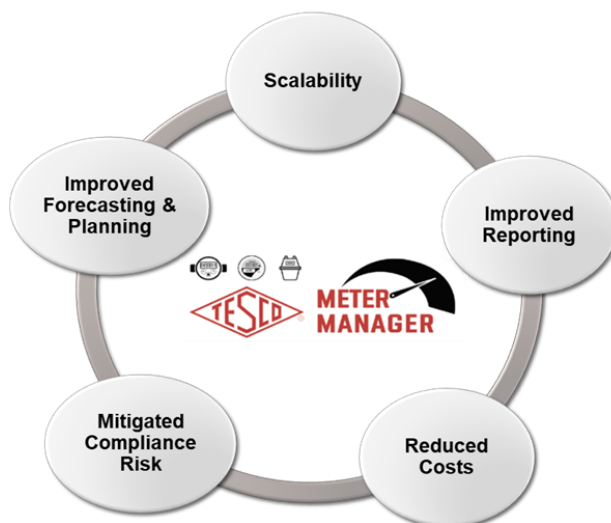
### Benefits

- ✓ Increased Return on Investment in Assets
- ✓ Controlled Spend
- ✓ Mitigated Compliance Risks
- ✓ Easy to use, intuitive, metering-centric software designed for utilities and their workflows

# BENEFITS OF ENTERPRISE SOFTWARE

## Goals

- Increase data visibility and transparency
- Reduce system complexity
- Mitigate compliance risk
- Increase operational efficiency
- Reduce costs

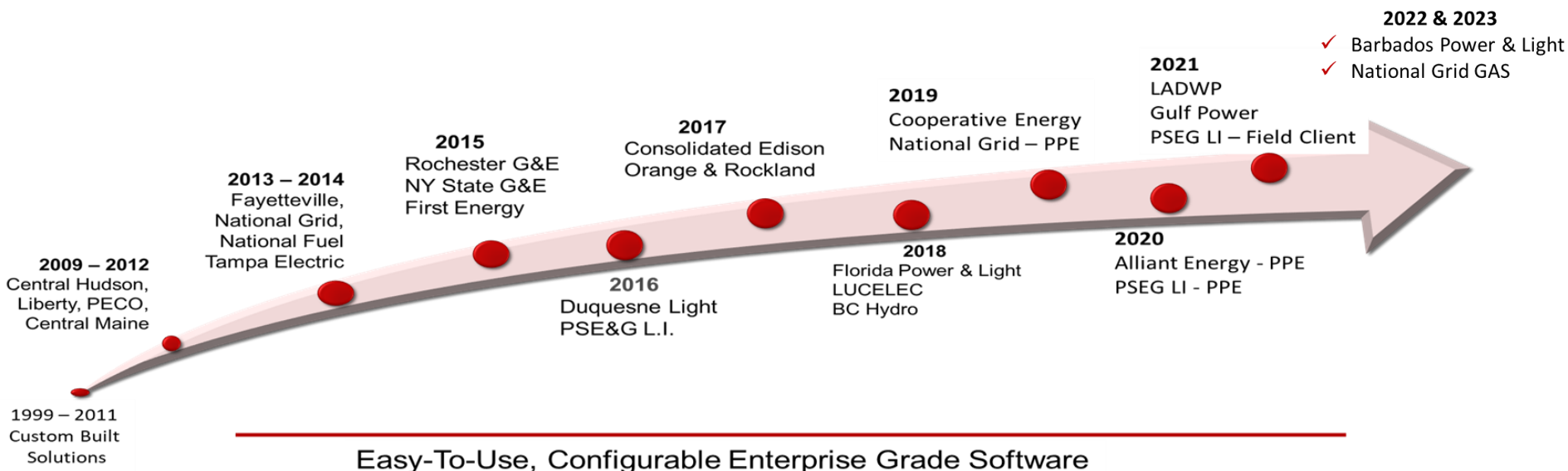


## Tenets

- Minimize risk
- Expand functionality while maintaining current capabilities
- Migrate all historical data
- No rework on obsolete systems
- Integration with core systems (ERP, CIS, MDMS, WMS)
- Enhanced AMI functionality

**Meter Manager is the only “metering-centric” software that streamlines business processes and improves access to metering and ancillary device information**

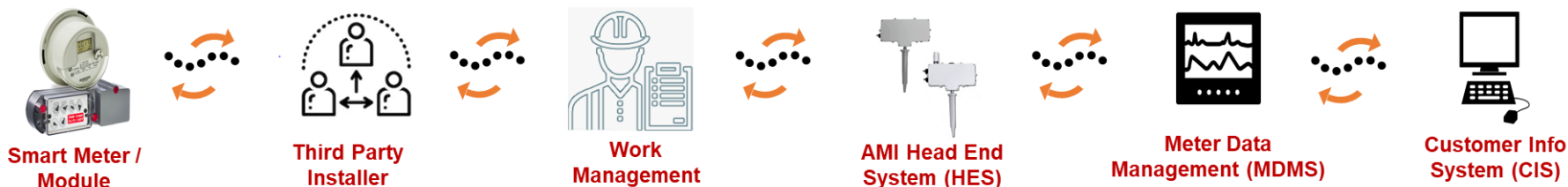
# VALUE: TECHNOLOGY & PROCESS IMPROVEMENTS



- ✓ The Test Dashboard has proven productivity on an a TESCO MTB, with a single technician on an 8-position board doing 5 times the work of person on a single position board.
- ✓ Meter Manager's supports all the major test kits and test boards with a single GUI interface
- ✓ Meter Manager can scale accordingly by adding additional modules and features.
- ✓ 75% of production accounts consistently purchase more modules year after year after year.
- ✓ Meter Manager offers proven benefits in quality management, inventory management, regulatory compliance, and productivity

# ADD VALUE THROUGHOUT THE AMI PORTFOLIO

## Architected with touchpoints to efficiently process core information



- ✓ Create devices from manufacturer files
- ✓ Perform acceptance testing, reject failed shipments
- ✓ Create devices in HES, MDMS, and CIS after acceptance
- ✓ Interface to communicate location changes, and the movement of shipment and sample batches
- ✓ Notification to release devices into stocked status
- ✓ Track devices down to the person/truck level
- ✓ Cross check meter installations against meter assignments
- ✓ Track removed meters back to the shop
- ✓ Equipment kits for CT/VT installations
- ✓ Maintain consistency between HES and CIS
- ✓ Find installed meters not on HES
- ✓ Find meters on HES not shown as installed
- ✓ Two-way update of program and firmware version
- ✓ Program ID OTA updates are automatically communicated and any changes to billing K are made
- ✓ MDMS billing multiplier can be cross-checked
- ✓ Calculates billing multiplier for cross-checking against CIS
- ✓ Can optionally be the system of record for device attributes, supply to other systems



60% of Customers have SAP  
25% of Customers have Oracle  
15% of Customers have legacy/other CIS

# ELIMINATE MANUAL ENTRY FROM TEST RECORDS

## Test Equipment

TESCO test boards and field test kits (40+ Test Boards)

WECO test boards (SDK licensed - 150+ boards in daily use)

PMT Console

Radian field test kits (50+ kits in daily use)

RFL test boards (30+ boards in daily use)

Probewell test kits (20+ boards in daily use)

Powermetrix test kits (5+ in daily use)

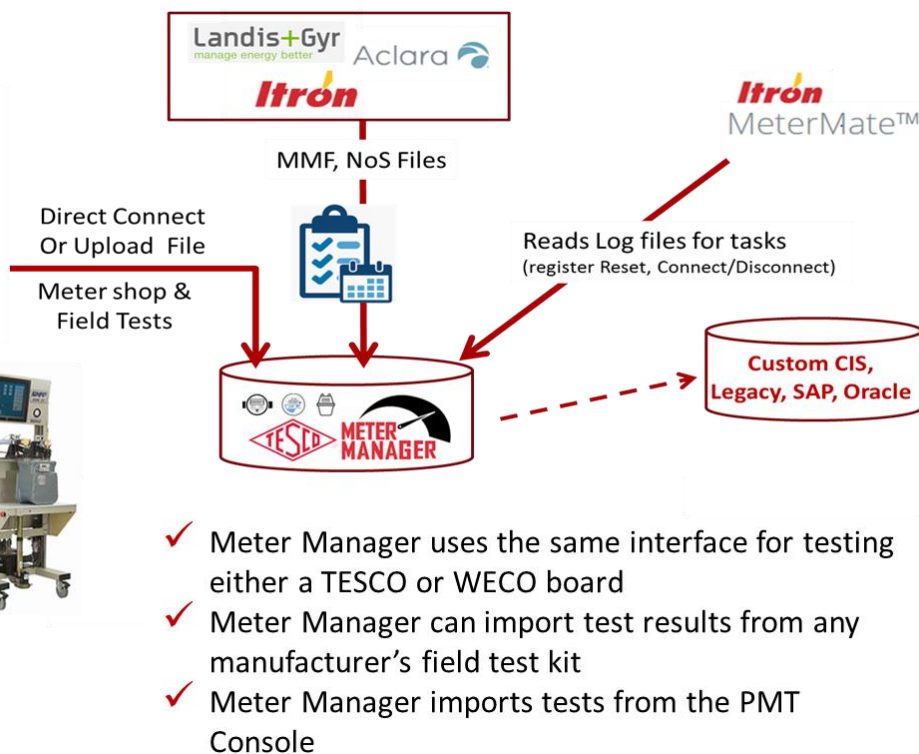
Knopp CT and VT testers (10+ in daily use)

SNAP Prover

## TESCO Products



## Other OEM Products

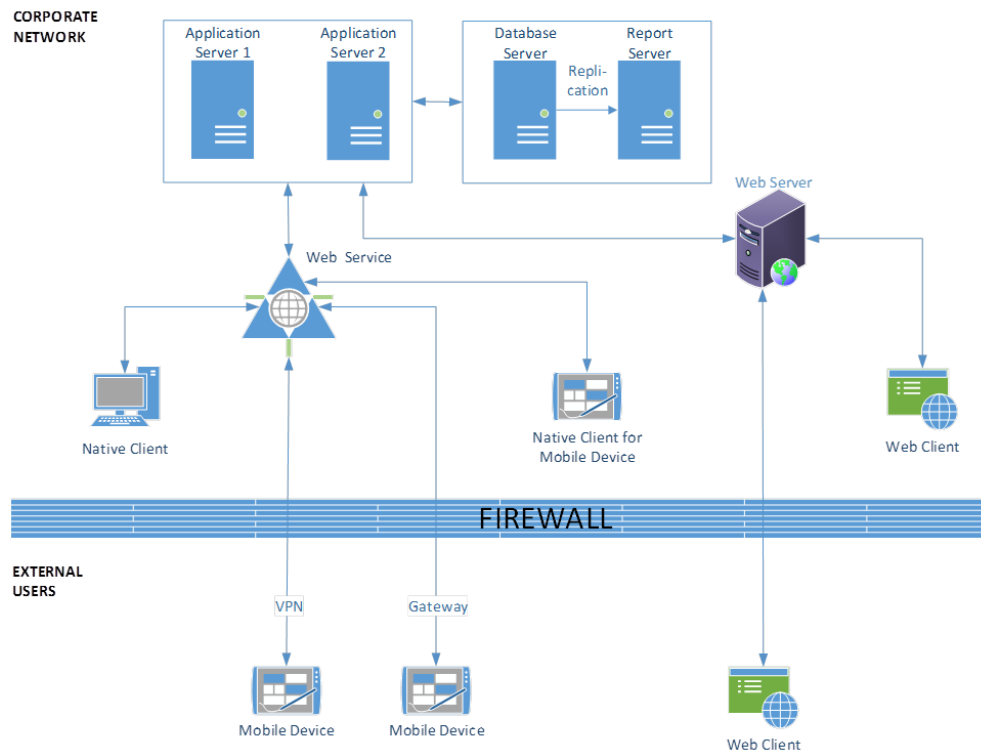


- ✓ Meter Manager uses the same interface for testing either a TESCO or WECO board
- ✓ Meter Manager can import test results from any manufacturer's field test kit
- ✓ Meter Manager imports tests from the PMT Console

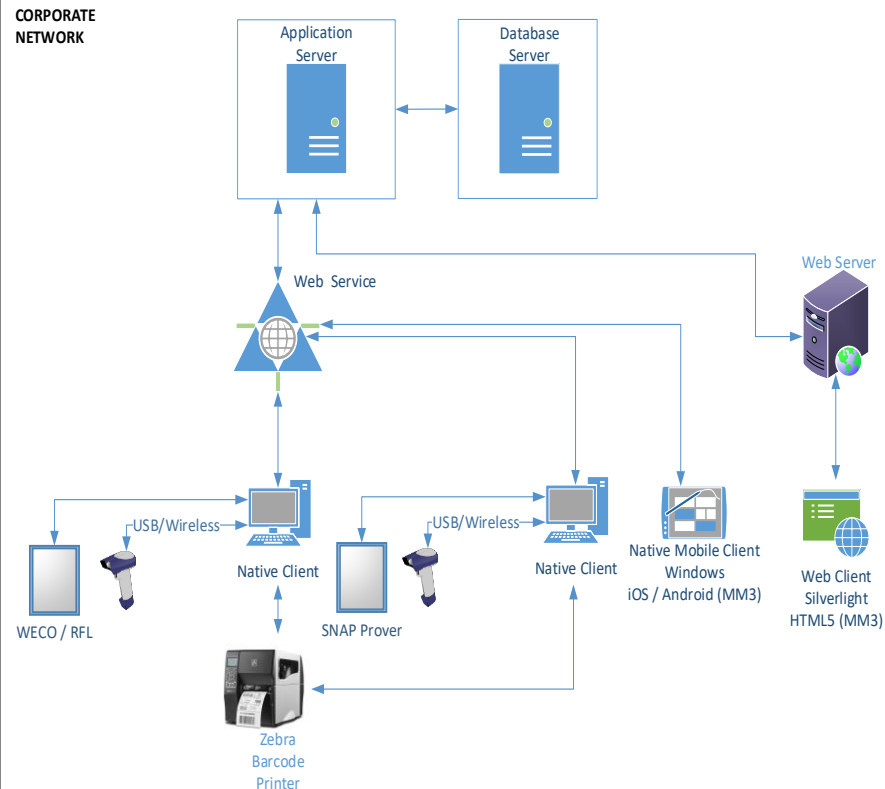
**In the FIELD or METER SHOP, Automatically store test records with manual entry**

# HOST ON-PREMISE OR YOUR CLOUD

## Complex



## Simple



Managed Services Available



# INTEGRATION WITH ENTERPRISE & LEGACY SYSTEMS

---

**Meter Manager** offers multiple methods of integration

- File-based, either scheduled or triggered by the arrival of a file
- Web service based integration may be used for real-time integration
- TESCO has existing file formats for integration with all major meter manufacturers.

**Meter Manager** is an “out-of-the-box” software suite that accommodates client’s needs (different business requirements) through configurations and switches, and not customization.

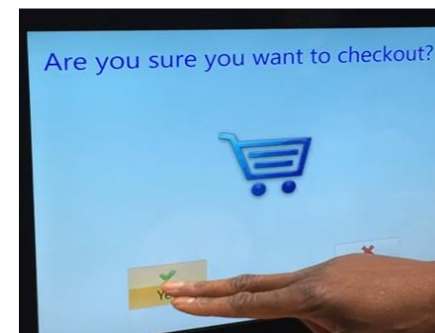
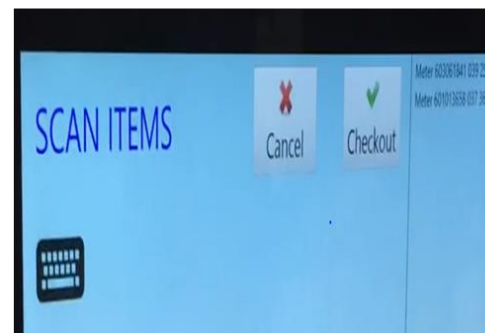
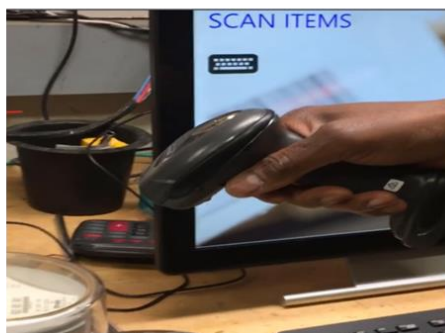
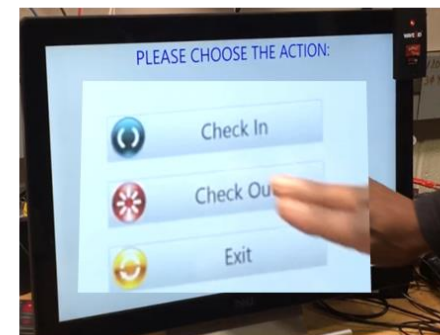
Integration is accomplished through **Meter Manager** Touch Points – these are specific places in the application where allowance is made for integration. This code is isolated from the rest of the application, and can be customized for each customer, while the main application is not changed.

**Meter Manager** can leverage existing interfaces that you already have in place. Many utilities have implemented Meter Manager while reusing existing interfaces to mainframe, SAP, Oracle, NISC, and other systems, by having Meter Manager use the exact format of the previous interfaces.

# CONTROLLING INVENTORY AND DEVICE CONSIGNMENT

## Built-In Feedback Loops catching potential problems earlier in the workflow

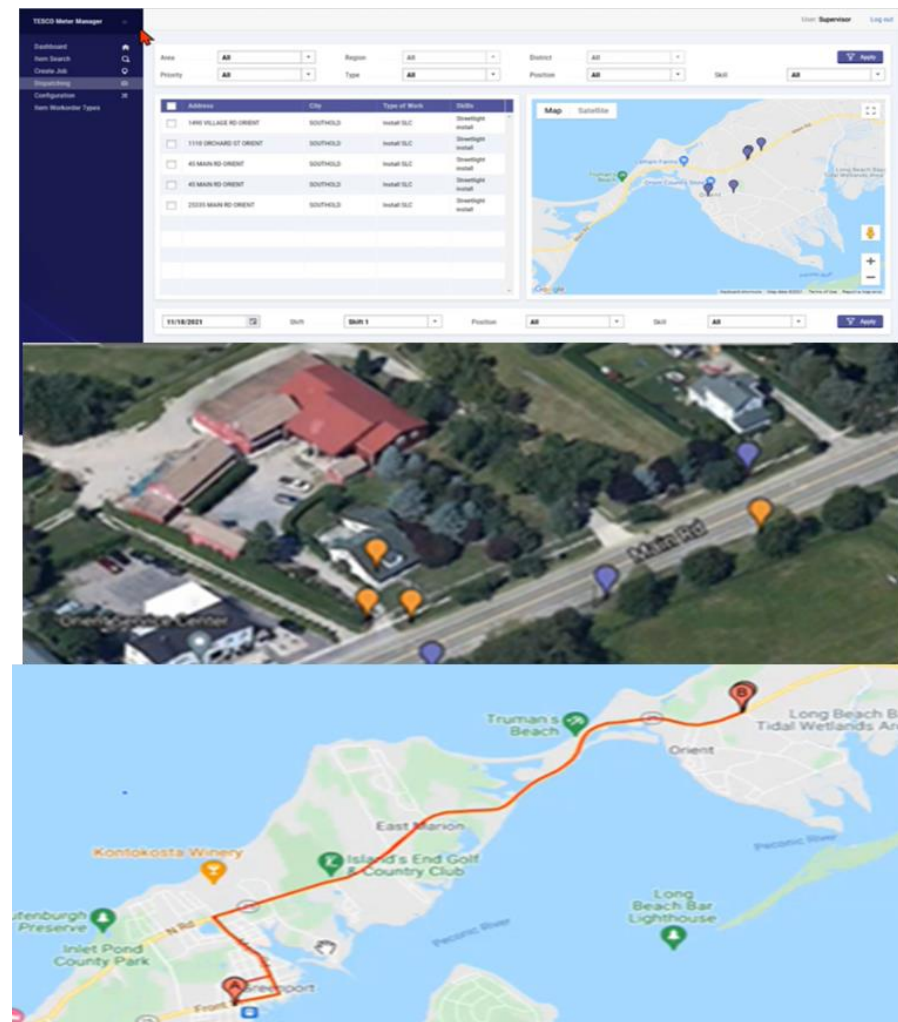
Meter Manager records the consignment to the employee and places the device back into inventory when the un-installed device is checked back in.





# METERING-CENTRIC FIELD SERVICE MANAGEMENT

- ✓ Skills based work order assignment
- ✓ Configurable tasks for each work order and/or equipment type
- ✓ Schedule a technician on-the-fly and instantly notify and update their schedule for re-routing
- ✓ Optimized routing that recommends the best and safest route for any location with the effort to complete work order (complex / simple) factored into the schedule
- ✓ Works standalone and when network available reconnects automatically and syncs data
- ✓ Increase field work's accuracy and efficiency through GPS



# METERING-CENTRIC DIFFERENTIATORS

- ✓ Capture power quality information directly from TESCO, Radian, Probewell, and PowerMetrix test kits
- ✓ Perform meter accuracy testing using TESCO 630 and 6330 test kits, import from other field test kits
- ✓ CT burden and/or accuracy testing
- ✓ Blind CT verification (validates CT serial numbers, without knowing the expected value) or update if incorrect
- ✓ Billing multiplier calculation, validation and cross check
- ✓ Removal Read verification (photo)
- ✓ Meter compatibility verification for exchanges, including allowing for compatible meter forms such as 12S - 25S.
- ✓ Meter class and voltage are checked for compatibility



- Designed for touch on a tablet, also compatible with a laptop
- Windows tablet now, iPhone and Android versions in 2022
- Responsive design accommodates different (mobile device) screen sizes
- Single database to store all test records
- Bluetooth handheld scanner enabled



# BUILT IN INTELLIGENCE WITH REAL-TIME INFORMATION

SCAN OLD METER

Close

SCAN NEW METER

Serial # 090737515

ENTER OLD METER READ

Right-to-left entry mode ☒

Wrong address? Search by Customer #

Old Meter

Serial Number: 095160521  
Model: S4X/16S/E - 069  
Customer Name: NORTH SHORE COMM SVC  
Customer #: 8046652803  
Premise: 80466528077181  
Address: 14 SHORE LA , BAY  
SHORE , New York, 11706

WARNING

- Device #090737515 was not checked out to Supervisor  
Mismatched fields:  
Form (old meter: 16S, new meter 2S)  
Voltage (old meter: 120, new meter 240)

Continue

Cancel

Old Meter

Serial Number: 095160521  
Model: S4X/16S/E - 069  
Customer Name: NORTH SHORE COMM SVC  
Customer #: 8046652803  
Premise: 80466528077181  
Address: 14 SHORE LA , BAY  
SHORE , New York, 11706

Read: 98765

New Meter

Serial Number: 090737515  
Model: REXU/2S/E - 051

# EXPERIENCED, TRUSTED AND SUCCESSFUL



## **TESCO Meter Manager** Enabling Control for Every Asset Under Management

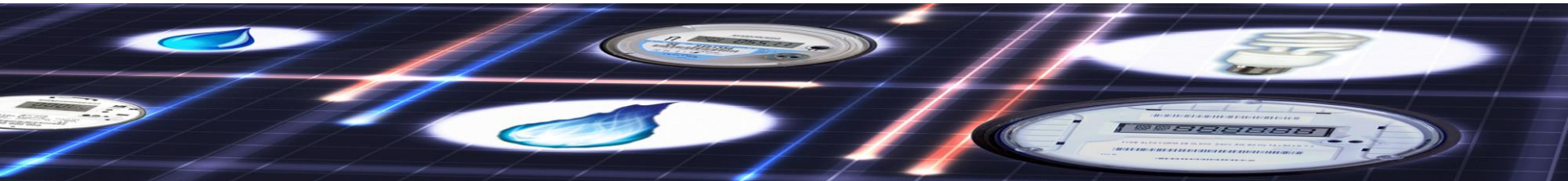
- ✓ Total control and transparency of your assets throughout the asset lifecycle
- ✓ **Year-on-Year growth and very satisfied customers** as over 75% expand their utilization of Meter Manager
- ✓ **Host On-premise, or your private cloud;** Infrastructure Managed Services available
- ✓ **Flexible financial models:** Purchase, Lease with option to purchase, or subscription model
- ✓ Ability to scale with new devices (Sensors, Street Light Controllers, ConnectDER, and all AMI equipment)



# CONTACT INFORMATION



ASSET MANAGEMENT SOLUTIONS



**Paul Fratellone**

**TESCO Software**

Director Software Products

[paul.fratellone@tesco.software](mailto:paul.fratellone@tesco.software)

267-588-1418