

NIGHTHAWK

DirectConnect™

Introducing TESCO NIGHTHAWK DirectConnect™ – a simple, integrated, “plug and play” under-the-glass cellular modem for Gen 5 Aclara kV2c meters. DirectConnect™ seamlessly links your AMI (Advanced Metering Infrastructure) system or NIGHTHAWK’s zero-infrastructure AMI. Our easy-to-use solution addresses your AMI voids so that you can improve data accuracy, enhance system efficiency, reduce costs, increase coverage, and improve customer satisfaction. DirectConnect™ allows users to fill in AMI gaps and replaces outdated 2G and 3G cellular devices that are no longer supported by most major carriers.

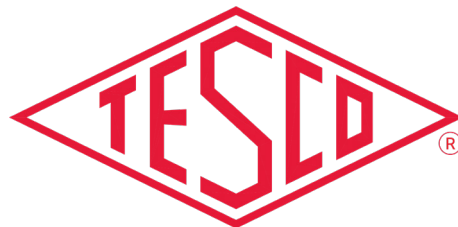
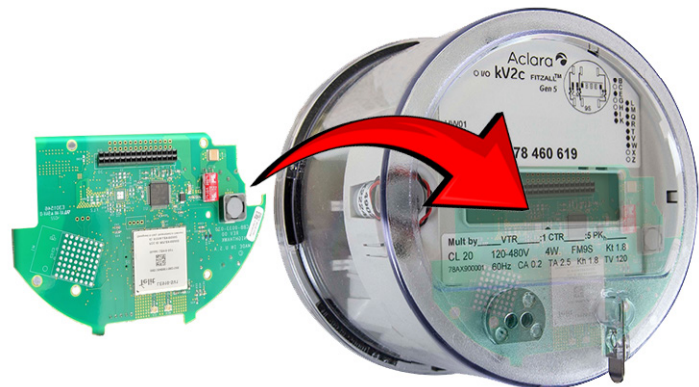
One feature that sets DirectConnect™ apart is the utilization of true IP and passthrough technology. This means users have “Always on Connectivity” so you can connect to the device 24/7 for reliable data, real time

status, and consistent operability. DirectConnect™ is also cross-functional by integrating popular interfaces such as the Itron MV-90™, Aclara MeterMate, Trilliant UnitySuite, and Trilliant PrimeRead.

In addition to these robust features, DirectConnect™ is secure and efficient. It has bidirectional delivery capabilities over LTE networks, allowing you to manager your meters and devices through multiple communication channels. DirectConnect™ is backed by the ANSI C12.22 128-bit AES/EAX encryption standard so that your data stays secure and protected.

DirectConnect™ is available with multiple options including an integrated KYZ Board and a Viking connector.

Your Solution to AMI Voids



Nighthawk

925 Canal Street, Bristol, PA 19007 • 215.228.0500 • tescometering.com

Made
in the
USA

DirectConnectTM

Functionality

Connectivity:	AT&T or Verizon LTE cellular
Security:	ANSI C12.22 128-bit AES/EAX (combined encryption/authentication)
Memory:	40 kB
Clock Synch:	To LTE network
Firmware:	Over-the-air upgradable
Power Outage: Restoration Reporting:	Aggregated real-time reporting

Compliance

Radio Emissions:	FCC Part 15 Class A Industry Canada ICES-003 Class A
Device IDs:	FCC ID: R17LE91ONAV2 IC ID: 5131A-LE91ONAV2
Safety:	ANSI C37.90.1 ANSI C62.41
Metrology:	ANSI C12.1 ANSI C12.18 ANSI C12.19 ANSI C12.20 ANSI C12.21

Radio Performance

Protocols:	TCP/IP
Modulation:	OFDM (Orthogonal Frequency
Date Rate:	LTE Cat-1 (5 Mbps up , 10 Mbps down)
Frequency Band:	LTE Bands 2, 4, and 12 or 13
Transmit EIRP:	+20 dBm (including antenna gain)

Power, Physical & Environmental

Burden (including module):	TCP/IP
S-Base:	OFDM (Orthogonal Frequency
Temperature:	-22° F / -30° C to +158°F / +70° C
Humidity:	5% to 95% non-condensing

Compability:

Gen 5 Aclara Kv2c meters
Class 20 forms: 3s, 4s, 6s, 9s, 36s, 45s
CL200 forms: 1s, 2s, 12s, 16s, 25s
Class 320 forms: 2s, 12s, 16s