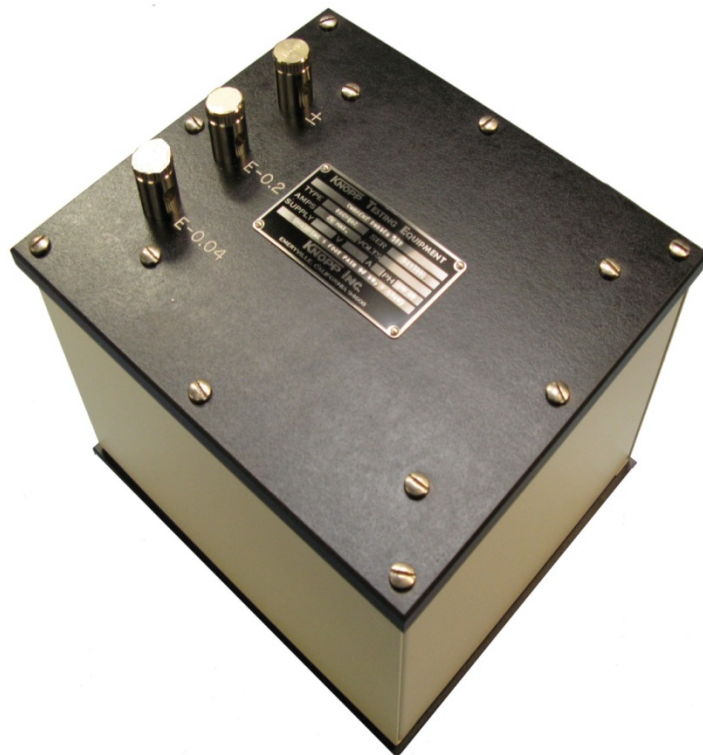




# burden set – current

**BSC-102**



## introduction

The industry has recognized the actual load (burden) on CTs is lower than the standard ANSI burdens allow. So a new IEEE Specification (IEEE C57.13.6) accommodates that fact by introducing two new burdens and two new accuracy classes. This new specification address **“High Accuracy”** CTs

Knopp has a new Burden Set that includes the two new burdens in the IEEE Specification: The E-0.04 and E-0.2 burdens. The new Burden Set is called the BSC-102. These burdens are of much lower impedance than that of the other ANSI burdens to much more closely match the real world.

## testing

To test CTs using the new **“High Accuracy”** specification, a means to measure accuracy at lower currents is needed in addition to the new Knopp BSC-102. All new Knopp Current Transformer test systems include a new KATC-C1 Comparator that has been upgraded to allow accuracy measurements down to 4 ma (less than 1% of test current) instead of the previous 4%. Older KATC-C and KATC-C1 Comparators can be modified to allow for this extended range testing with the new BSC-102.

Note that this Comparator modification also allows accuracy measurements of all “Extended Range” CTs.

## implementation

All new KCTS-8000 CT Test Systems will have the BSC-102 built in and the KATC-C1 will have the necessary modification to accommodate. The required burden (E-0.04 or E-0.2) is built-in and selected by the front panel Burden select switch.

Existing installations of the KCTS-8000 CT Test System can be modified. The BSC-102 Burden Set box can be mounted on top of the KCTS and connected to the “external burden” terminals. The Comparator would have to be returned for modification at Knopp.

## specifications

Here are characteristics of the BSC-102:

Burden Designation	Resistance (ohms)	Inductance (millihenrys)	Impedance (ohms)	Volt-amperes	Power factor
E-0.04	0.04	0.0	0.04	1.0	1.0
E-0.2	0.20	0.0	0.20	5.0	1.0

Dimensions: The approximate overall dimensions of the BSC-102 is 8-1/4” long x 7-1/4” wide x 7-3/4” high

Weight: The net weight of the BSC-102 is approximately 7 pounds.

### Knopp, Inc.

**A TESCO COMPANY**

925 Canal Street

Bristol, PA 19007

Ph: 215-228-0500

[sales@knoppinc.com](mailto:sales@knoppinc.com)

[www.knoppinc.com](http://www.knoppinc.com)