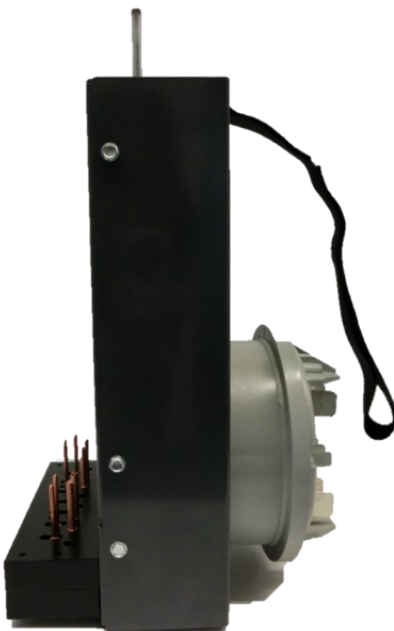




THE EASTERN SPECIALTY COMPANY

# A-BASE TEST BOARD ADAPTER

CAT. 1182-3



## ISSUE SOLVED

From time to time, you may find yourself needing to test A-Base meters. Or perhaps you will need to test them for the first time in years as part of a removal project. Well, **TESCO** can help!

- If the quantity is small, we can test them in our shop for you.
- If the quantity is larger, we have an **A-Base Test Board Adapter!**

## SPECIFICATIONS

- Easy-to-use
- 30 amp
- **Cat. 1182 (Single Phase)** accommodates forms 1A, 2A, 3A, and 12A
- **Cat. 1183 (Polyphase)** accommodates forms 4A, 5A, 6A, 8A, 9A, 10A, 11A, 13A, 14A, 15A, 16A, 17A, 18A, 29A, 35A, 36A, 45A, 46A, and 48A
- Please contact us for other forms
- Can be used on ALL TESCO Meter Test Boards, RFL 5800s, and most WECO test boards
- **Dimensions:** approximately 7" x 4.5" x 12.5"
- Weighs less than 5 pounds

