

Asset Lifecycle

cradle to grave (full life-cycle)

Designed for utility operation, Meter Manager provides cradle-to-grave processing.

Modularized functions allow for customized implementations:

- Meter Shop Operations
- Site Verification
- Random/In-Service Testing
- Field Exchange
- Self-Service KIOSK (Consignments)

Purchase and lease financing options available.



Who We Are

With more than 100 years of industry knowledge and experience, **TESCO Meter Manager** is seamlessly supporting IOUs, Municipalities and Cooperatives of all sizes. We have vast experience with AMI deployments as well as integrating with SAP, Oracle and other utility industry leaders.



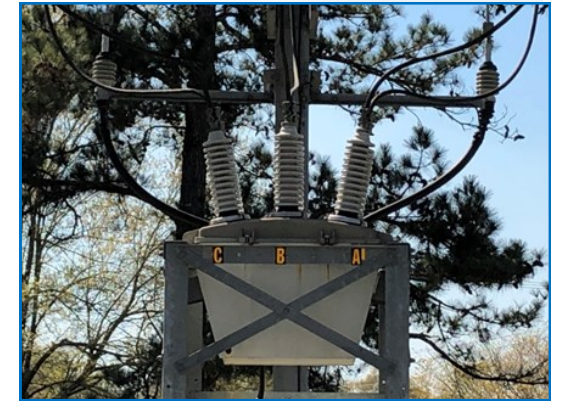
Contact Us

Paul Fratellone
 (M): 267.588.1418 • (O) 215.785.2338
 (E): paul.fratellone@tescometering.com
www.tescometering.com

925 Canal Street
 Bristol, PA 19007



Trusted utility software supporting Legacy, AMR/AMI and Network Devices



AMI METERING DEVICES



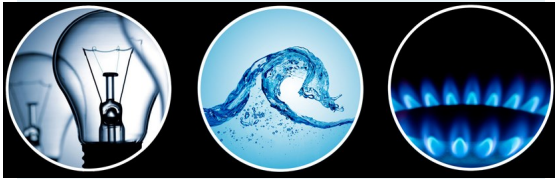
GAS

WATER

ELECTRIC

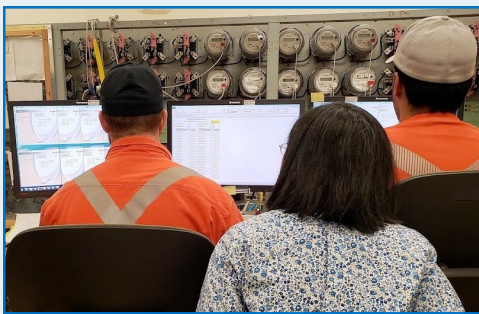
What Is Meter Manager?

TESCO Meter Manager is an out-of-the box, configurable, easy to use asset and inventory management platform.



Designed with utilities in mind, Meter Manager enables cradle-to-grave processing of legacy, AMR and AMI meters including network communications, CT/VT, volume correctors and sensors.

Drawing more than a century of industry knowledge and experience, **TESCO Meter Manager** is the number one piece of software in the industry with more than 40 million assets under management supporting IOUs, Municipalities and Cooperatives.



TESCO Meter Manager system is designed for the utility industry and allows a single “pane of glass” into assets under management.

- Electric, Gas and Water Meters
- AMI Communication devices
- Transformers
- Sensors and alarms



Experienced and Trusted

- 40+ million assets under management
- Continued Year over year growth and successful implementations
- Connect to any meter test equipment and field devices
- Experienced and successful with AMI Deployments and ERP/Legacy and SAP integrations
- Annual Users Group Conference



Business Process Automation

- Simple to complex integration—Meter Manager can be the System-of-Record (SoR) and/or interface with other SoRs
- Enterprise grade 3-tier architecture able to handle hundreds of simultaneous users and tens of millions of assets
- Tablet and mobile (Android/iOS enabled)
- Self-service KIOSK
- Barcode scanning, processing and printing
- Integration with all major test boards and field test equipment
- Robust reporting engine for ad-hoc reporting

