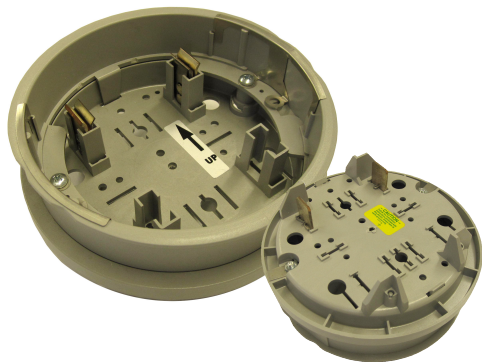


THE EASTERN SPECIALTY COMPANY

*Metering. Leader... Since 1904*

## Catalog No. 251, 252, 253 & 254

# TESCO Service Disconnect Adapters/Shield



**SERVICE DISCONNECT ADAPTER  
CATALOG NO. 251**



**SERVICE DISCONNECT ADAPTER  
CATALOG NO. 254**



**SERVICE DISCONNECT SHIELD  
CATALOG NO. 253**

TESCO's Service Disconnect Adapter (Catalog No. 251) disconnects customer load, while maintaining power to the meter. The meter continues reading and communicating for AMR/AMI operations, while disabling service on the load side. For utilities that do not want to maintain power to the meter, TESCO also offers a non-energized version (Catalog No. 252). The non-energized Service Disconnect Adapter has highly durable plastic jaw blades in place of the plated copper jaw blades.

Utilities that require the meter to be energized, but also tilted at a 45° angle can use Service Disconnect Catalog No. 254.

The TESCO Service Disconnect Adapters are constructed of UV stabilized plastic, fiberglass-reinforced polycarbonate, and have a UL-94-5VA flame rating.

### Specifications

- UV stabilized plastic
- UL 94-5VA flame rating
- Fiberglass reinforced polycarbonate
- 1.5" stand-out dimension
- Plated Copper Jaw Blades (Catalog No. 251 & 254)
- Plastic Jaw Blades (Catalog No. 252)

TESCO also offers a Service Disconnect Shield (Catalog No. 253), which gives meter technicians a quick visual indication of disconnected service by tilting the meter 45°. The Service Disconnect Shield is a cost effective way to safely and easily disconnect power, while leaving the meter on-site. The TESCO Service Disconnect Shield is for use with 1S & 2S Meter Forms only.

TESCO - THE EASTERN SPECIALTY COMPANY

Canal Street & Jefferson Avenue • Bristol, PA 19007 • Phone: 800-762-8211 • 215-785-2338 • Fax: 215-781-0508

[www.tesco-advent.com](http://www.tesco-advent.com)